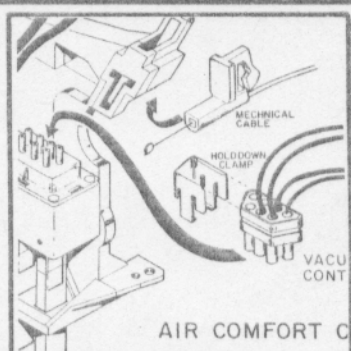


BEAVER COACHES INC.



# SERVICE manual

Retain in your coach at all times.

# GENERAL INDEX

ISSUED JAN 1995

**NOTE:** WHEN USING DRAWINGS PROVIDED HERE IN, CONSIDER THAT YOUR COACH MAY OR MAY NOT CONTAIN ALL OF THE COMPONENTS SHOWN, DEPENDING ON MODEL AND OPTIONS.

DESCRIPTION	DRAWING NUMBER	NO. of SHEETS
<i>Patriot</i>		
• FRONT WIREWALL COMPONENT IDENTIFICATION	P-001	1
• 220/110 VAC SOURCES TO BREAKER PANEL (EXTERNAL POWER CORD, TRANSFER RELAY AND GENERATOR.	95022	1
• PRIMARY 12 VOLT SYSTEM / COMPONENT LOCATIONS	48666	2
• PRIMARY DC DISTRIBUTION	E-0033	1
• IGNITION SYSTEM	48667	2
• BRAKE LIGHT SCHEMATIC	48678	1
• 12V DC DISTRIBUTION	95033	4
• TURN SIGNAL, TAIL, HEADLIGHT AND CLEARANCE LIGHTS	48675	1
• RIGHT DASH PANEL WIRING DIAGRAM	48517	1
• 110 VAC OUTPUT DISTRIBUTION (ALL PATRIOTS)	48518	1
• 110 VAC OUTPUT DISTRIBUTION FROM INVERTER (ALL PATRIOTS)	48518	1
• ELECTRICAL BAY	48519	1



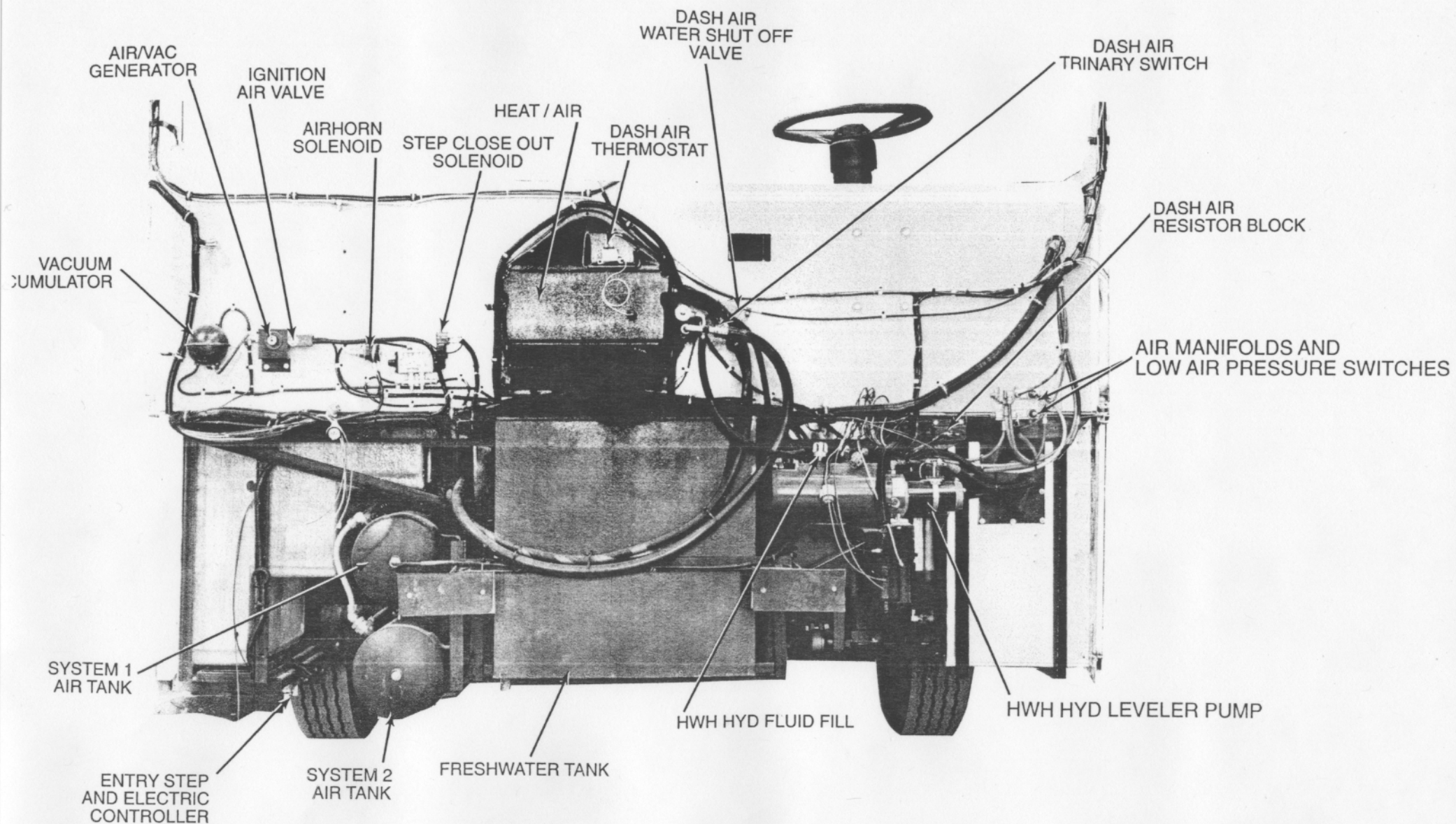


Photo taken November 21, 1994

**PATRIOT**



SERVICE MANUAL  
BEAVER MOTOR COACHES

TITLE: **FRONT FIREWALL**

7

6

5

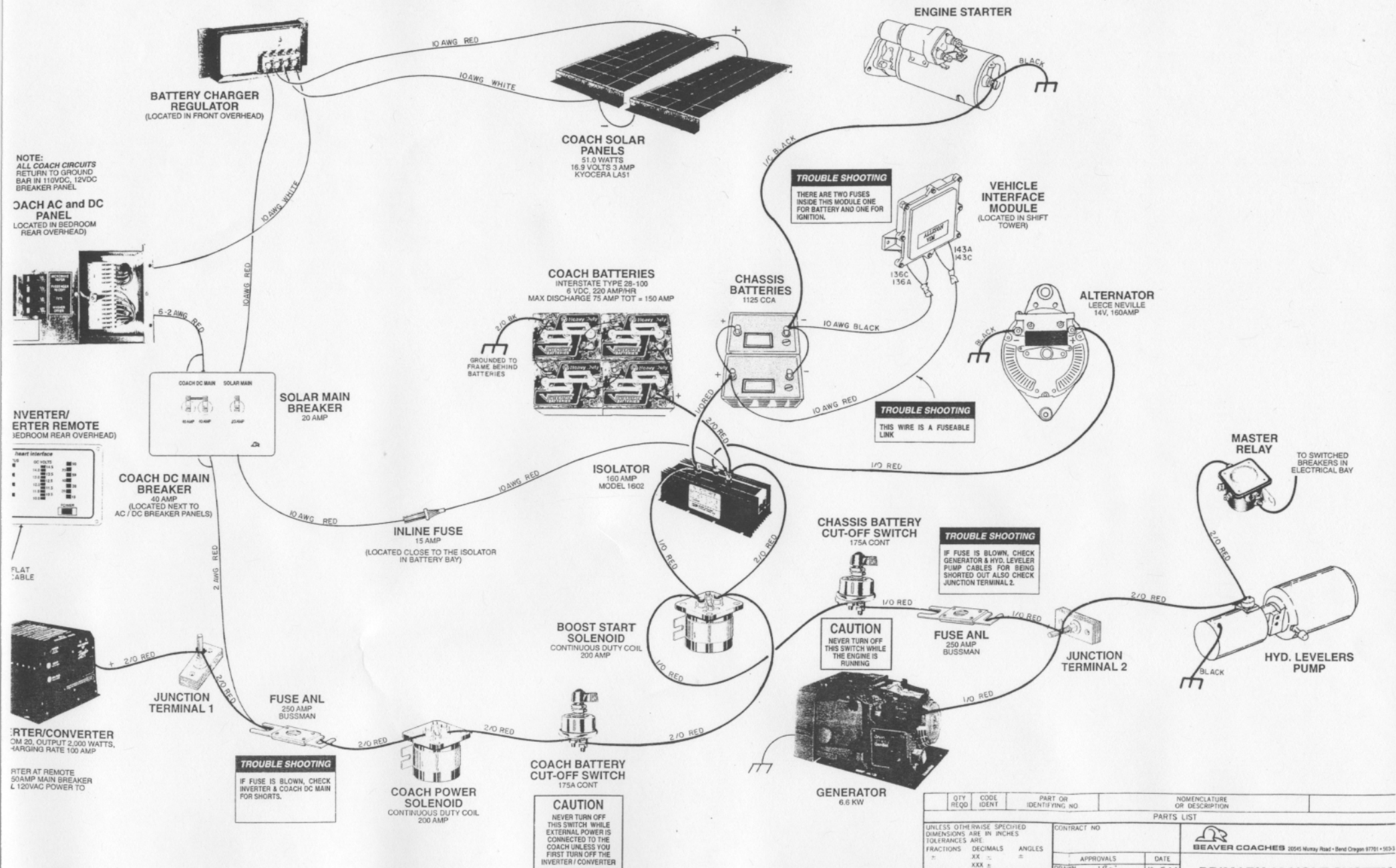
4

3

2

1

REVISIONS			
ZONE	LTR	DESCRIPTION	DATE



NOTE: SEE SHEET 2 OF DRAWING NO. 48666 FOR  
LOCATION OF COMPONENTS ON THE SPARTAN  
CHASSIS.

QTY REQD	CODE IDENT	PART OR IDENTIFYING NO	NOMENCLATURE OR DESCRIPTION
PARTS LIST			
UNLESS OTHERWISE SPECIFIED DIMENSIONS ARE IN INCHES TOLERANCES ARE			
FRACTIONS	DECIMALS	ANGLES	
XXX ±	XX ±	XXX ±	
MATERIAL			
FINISH			
CONTRACT NO		APPROVALS	
		DATE	
DRAWN		10-5-94	
CHECKED		10-11-94	
ALL U.S.A. PATRIOTS		SIZE	
		CODE IDENT NO	
		DRAWING NO.	
		48666	

BEAVER COACHES 20040 Murtry Road • Bend Oregon 97701 • 503-3

PRIMARY 12 VOLT SYSTEM  
COMPONENT LOCATIONS



8

7

6

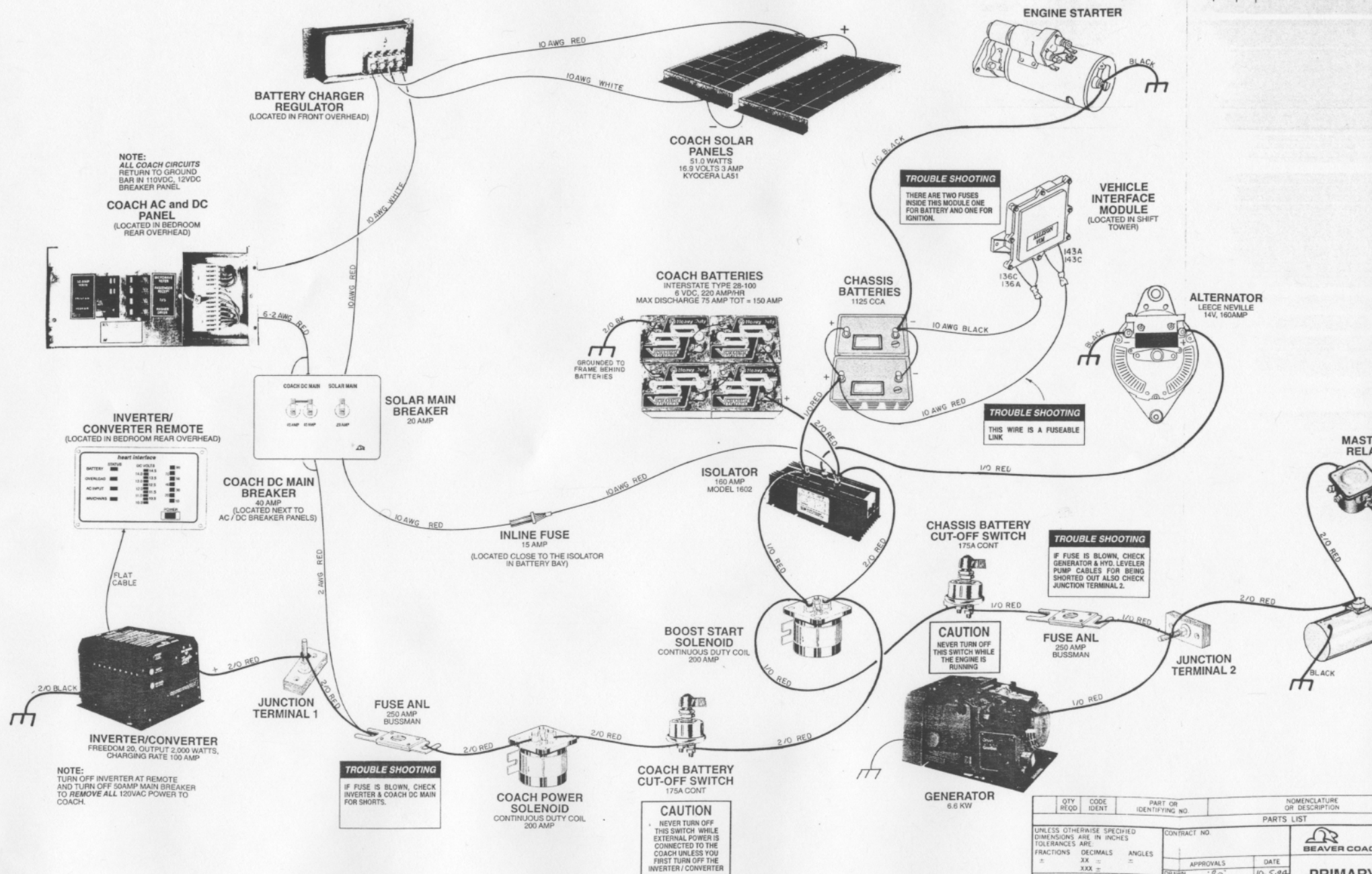
5


4

3

2

REVISIONS		DESCRIPTION
ZONE	LTR	

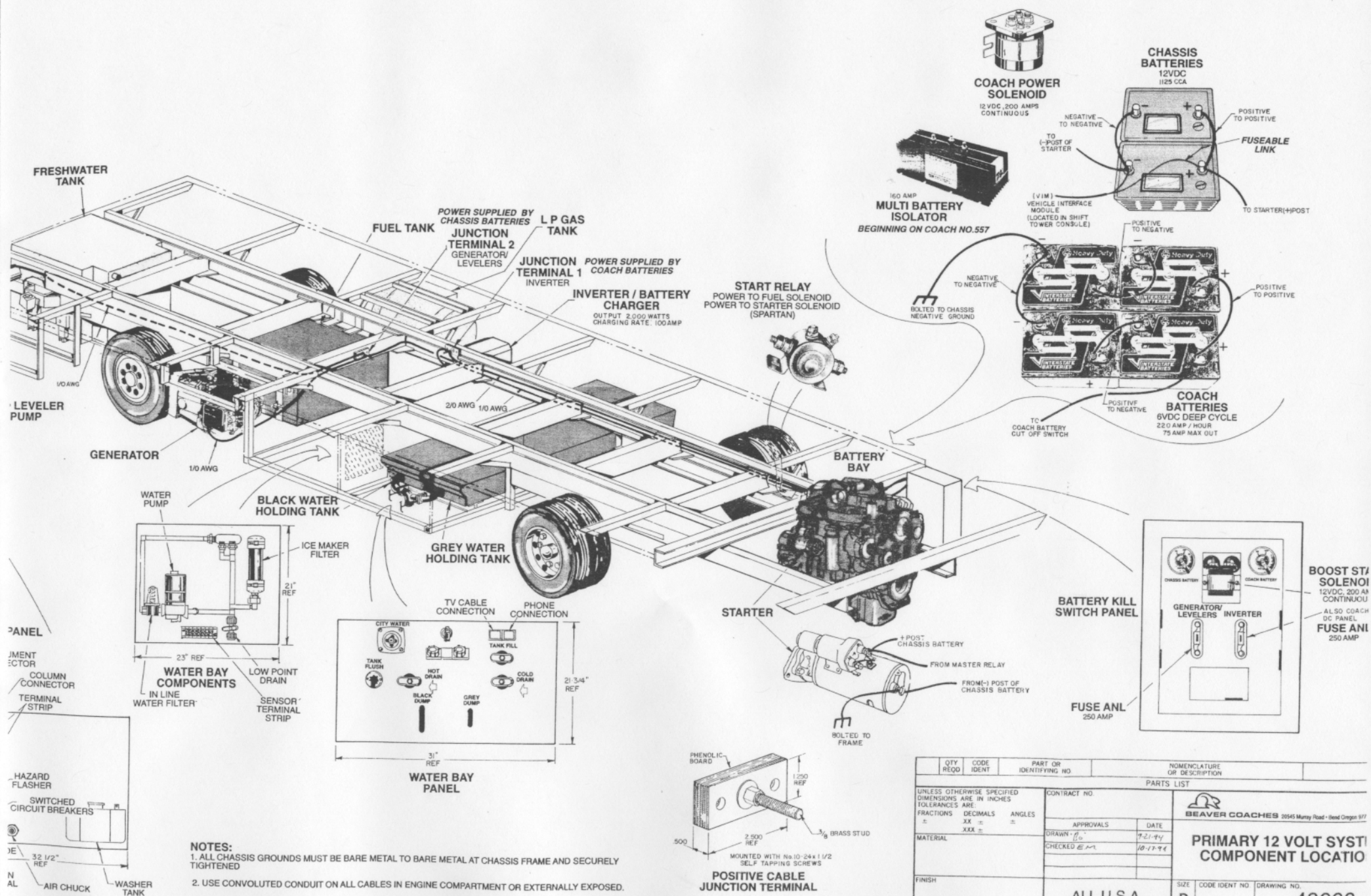


QTY REQD		CODE IDENT		PART OR IDENTIFYING NO.		NOMENCLATURE OR DESCRIPTION	
PARTS LIST							
UNLESS OTHERWISE SPECIFIED DIMENSIONS ARE IN INCHES						CONTRACT NO.	
FRACTIONS		DECIMALS		ANGLES			
=		XX =		=			
		XXX =					
MATERIAL						APPROVALS	
						DATE	
						DRAWN 80	
						CHECKED EM 10-5-94	
FINISH						SIZE	
						CODE IDENT NO.	
ALL U.S.A.						D	

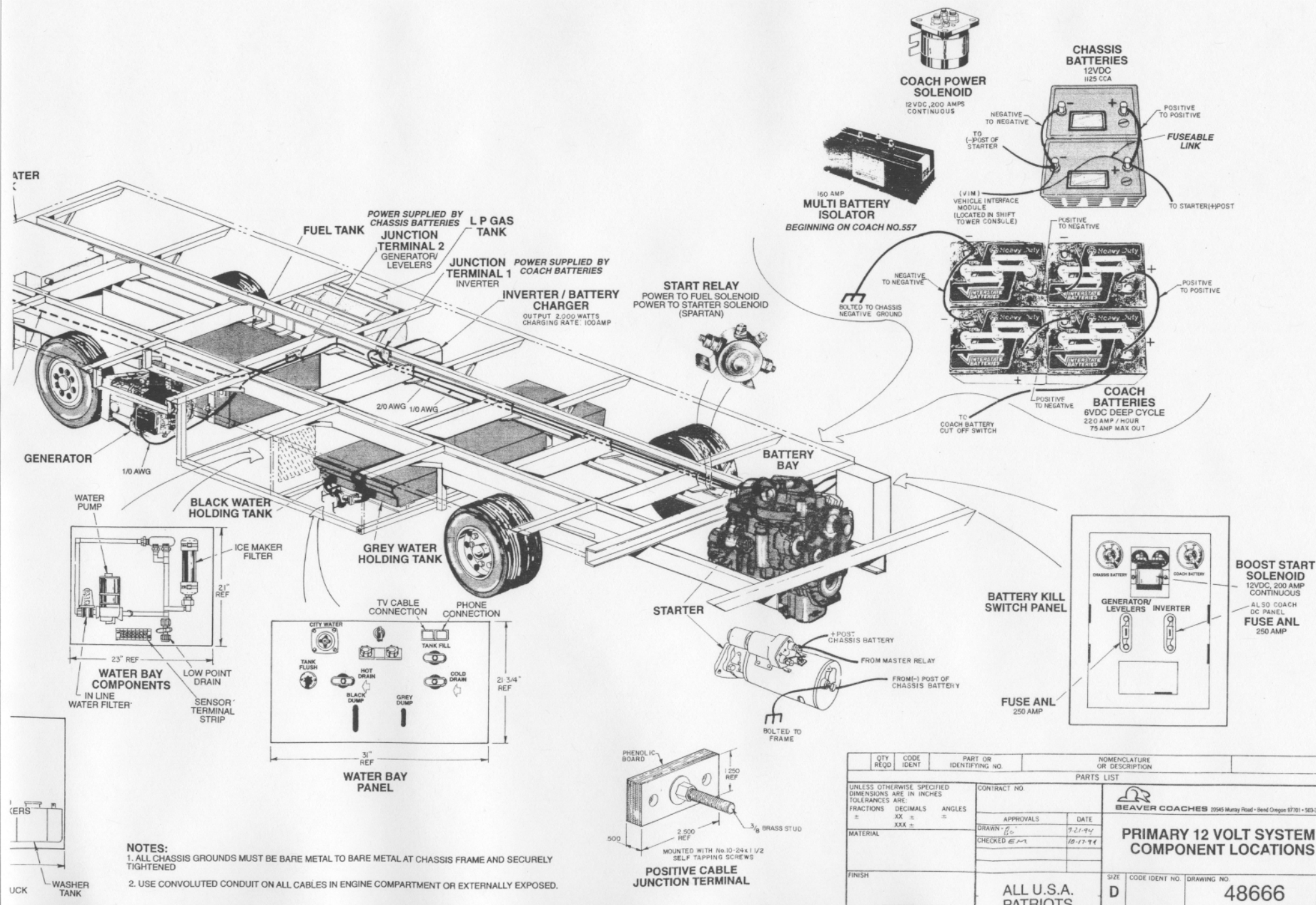
BEAVER COACH

PRIMARY COMPO





REVISIONS				
ZONE	LTR	DESCRIPTION	DATE	APPROVED
	A	CORRECTED BATTERY CONNECTION WHICH GOES TO BATTERY CUT OFF SWITCH FROM COACH BATTERIES.	1/30/95	

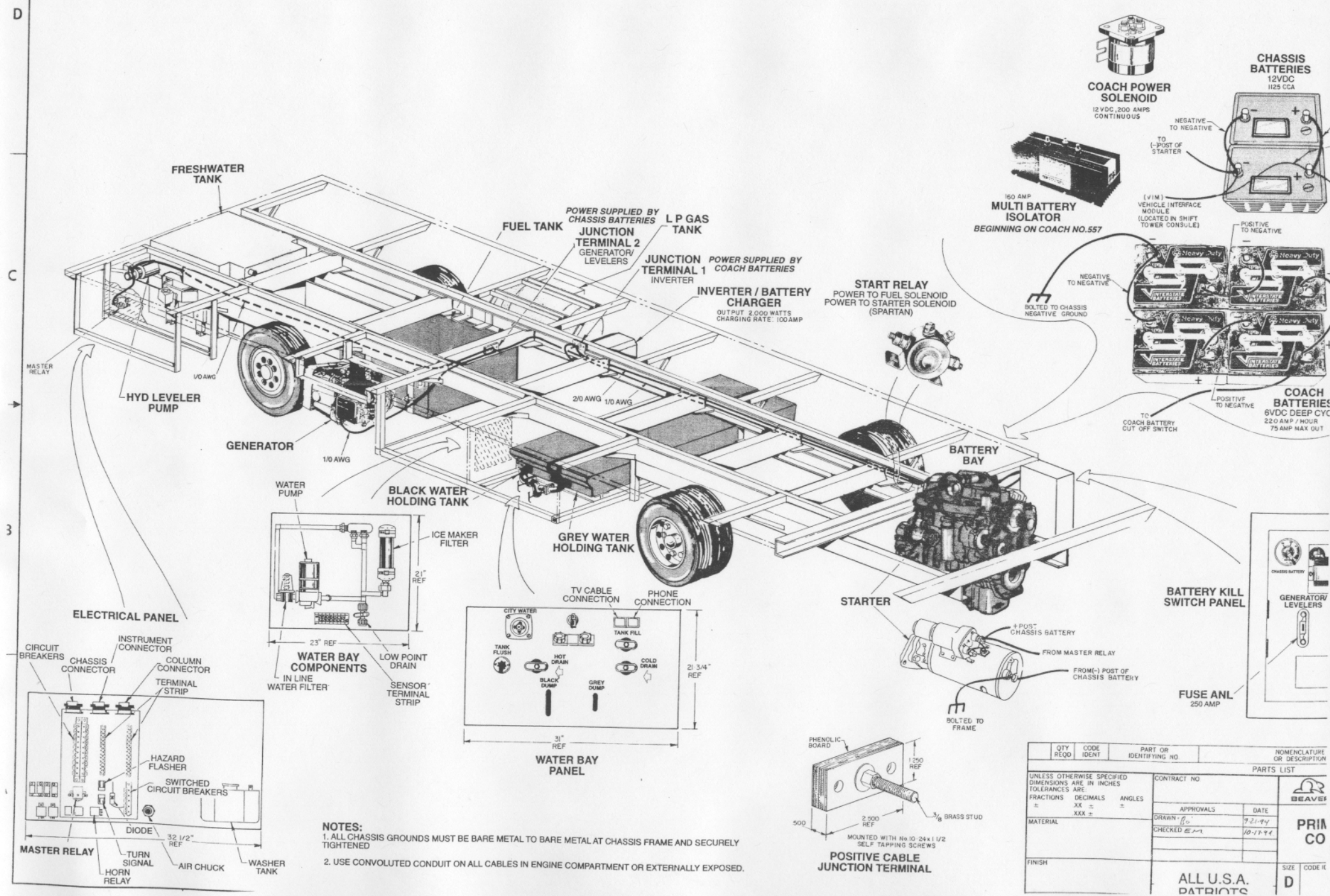




D

C

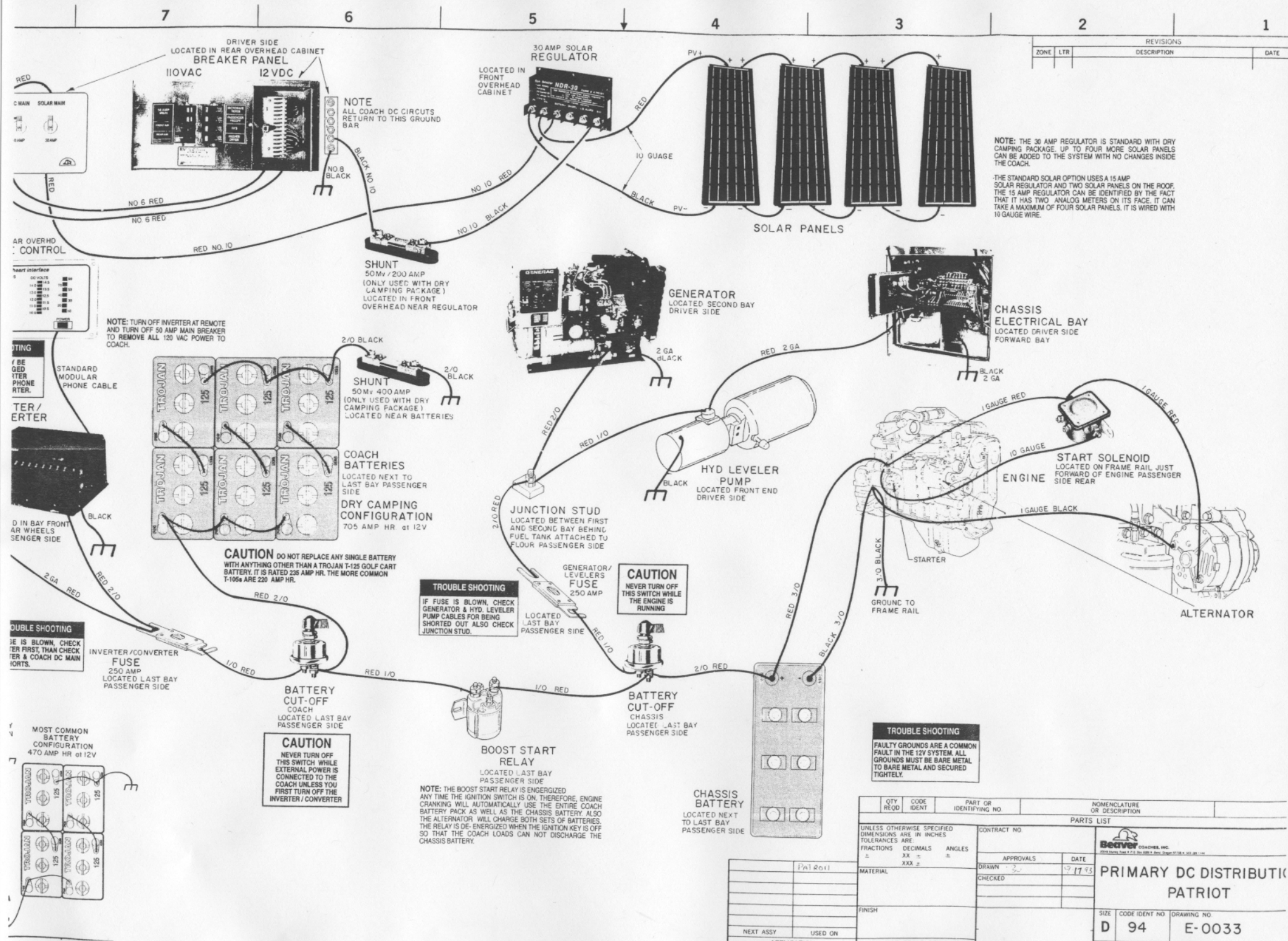
3

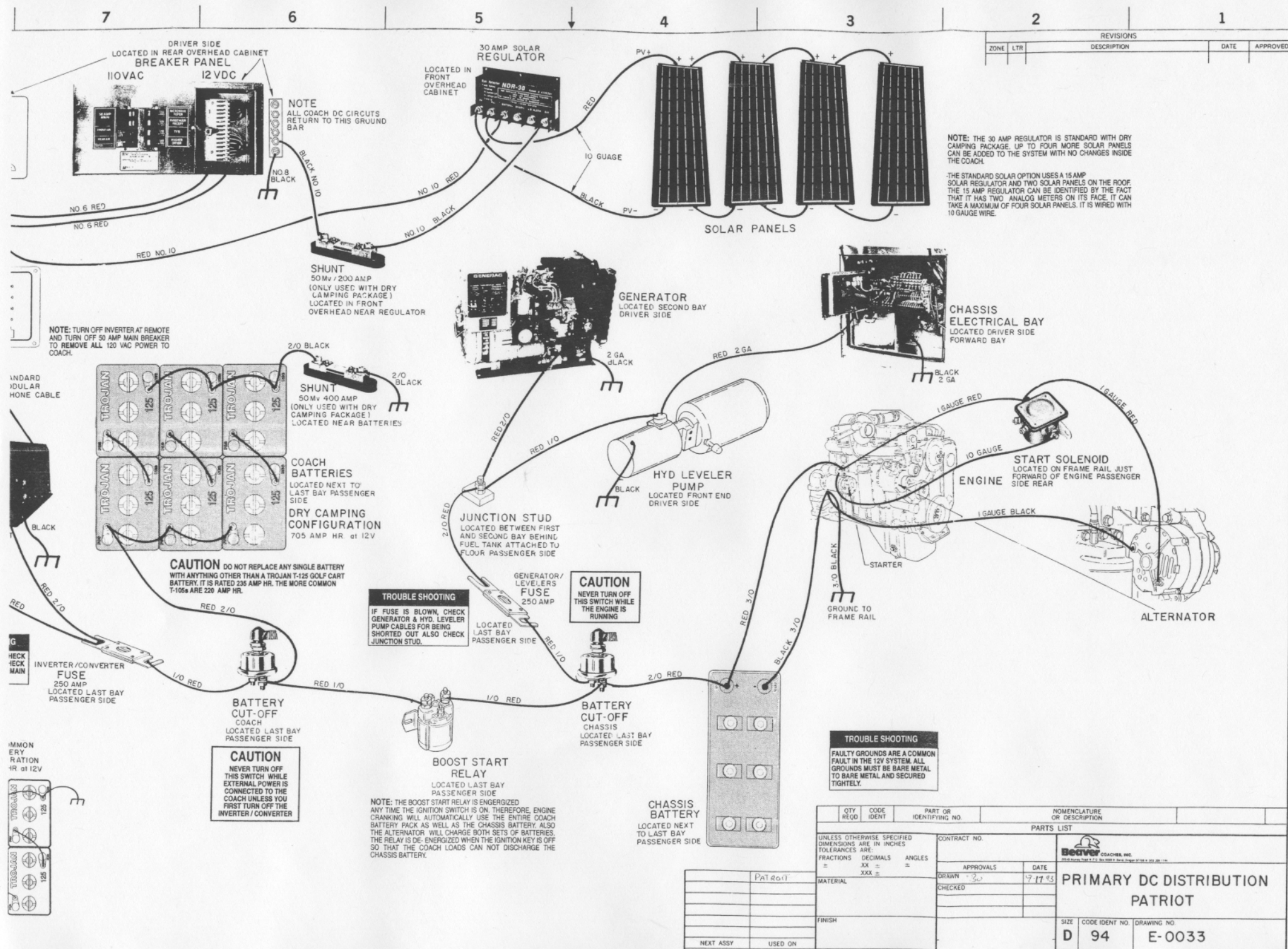


**NOTES:**  
 1. ALL CHASSIS GROUNDS MUST BE BARE METAL TO BARE METAL AT CHASSIS FRAME AND SECURELY TIGHTENED  
 2. USE CONVOLUTED CONDUIT ON ALL CABLES IN ENGINE COMPARTMENT OR EXTERNALLY EXPOSED.

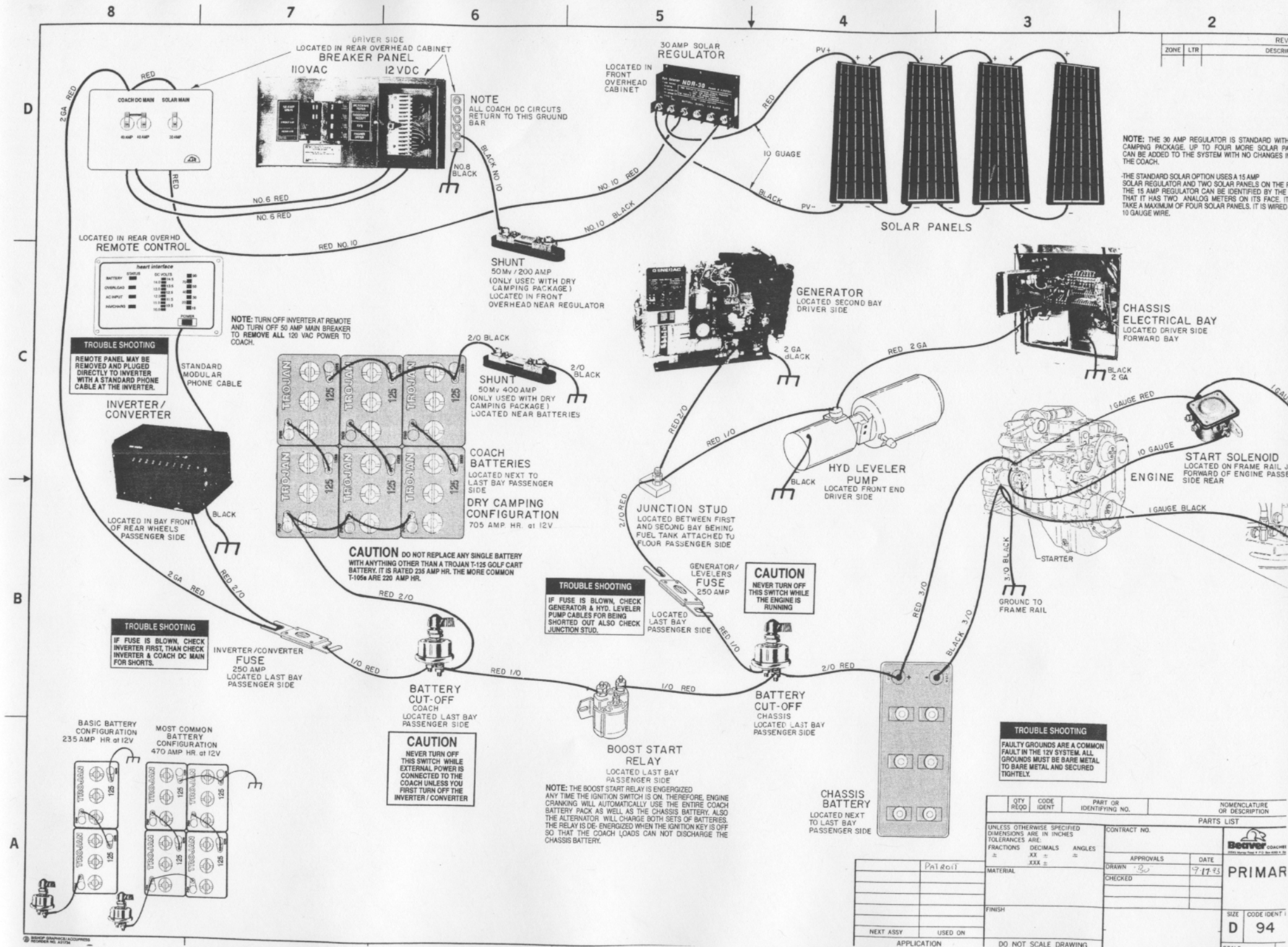
QTY REQD	CODE IDENT	PART OR IDENTIFYING NO	NOMENCLATURE OR DESCRIPTION
PARTS LIST			
UNLESS OTHERWISE SPECIFIED DIMENSIONS ARE IN INCHES TOLERANCES ARE:		CONTRACT NO	
FRACTIONS	DECIMALS	ANGLES	APPROVALS
XX ±	XXX ±	±	DATE
MATERIAL		DRAWN BY	
		CHECKED BY	
FINISH			
		ALL U.S.A. PATRIOTS	
		SIZE CODE	
		D	













QTY REQD	CODE IDENT	PART OR IDENTIFYING NO.	NOMENCLATURE OR DESCRIPTION	
			PARTS LIST	
UNLESS OTHERWISE SPECIFIED DIMENSIONS ARE IN INCHES TOLERANCES ARE:			CONTRACT NO.	
FRACTIONS	DECIMALS	ANGLES		
±	.XX ±	±		
	.XXX ±			
MATERIAL	CONTRACT NO.			
FINISH	APPROVALS			
	DATE			
	DRAWN <i>2</i>			
	CHECKED			

**Beaver** COACHES  
1988 Beaver Coach 7 212 340 000 4 20

**PRIMA**

SIZE **D** CODE IDENT **94**



QTY REQD	CODE IDENT	PART OR IDENTIFYING NO.	NOMENCLATURE OR DESCRIPTION	
			PARTS LIST	
UNLESS OTHERWISE SPECIFIED DIMENSIONS ARE IN INCHES TOLERANCES ARE: FRACTIONS    DECIMALS    ANGLES ±                    .XX ±                    ° .XXX ±                    °			<div>  <b>BEAVER COACHES</b> 35545 Murray Road • Bend Oregon 97701 • 503- </div>	
MATERIAL          FINISH			<div> <div>CONTRACT NO.</div> <div> <div>APPROVALS</div> <div>DATE</div> </div> </div>	
			<div> <div>DRAWN 3.5</div> <div>10-27-94</div> </div>	
			<div> <div>CHECKED SM</div> <div>11-16-94</div> </div>	
			<div>  <b>IGNITION SYSTEM - PATRIOT</b> </div>	
			<div> <div>SIZE</div> <div>CODE IDENT NO</div> <div>DRAWING NO.</div> </div>	
			<div> <div>D</div> <div></div> <div>48667</div> </div>	

7

6

5

4

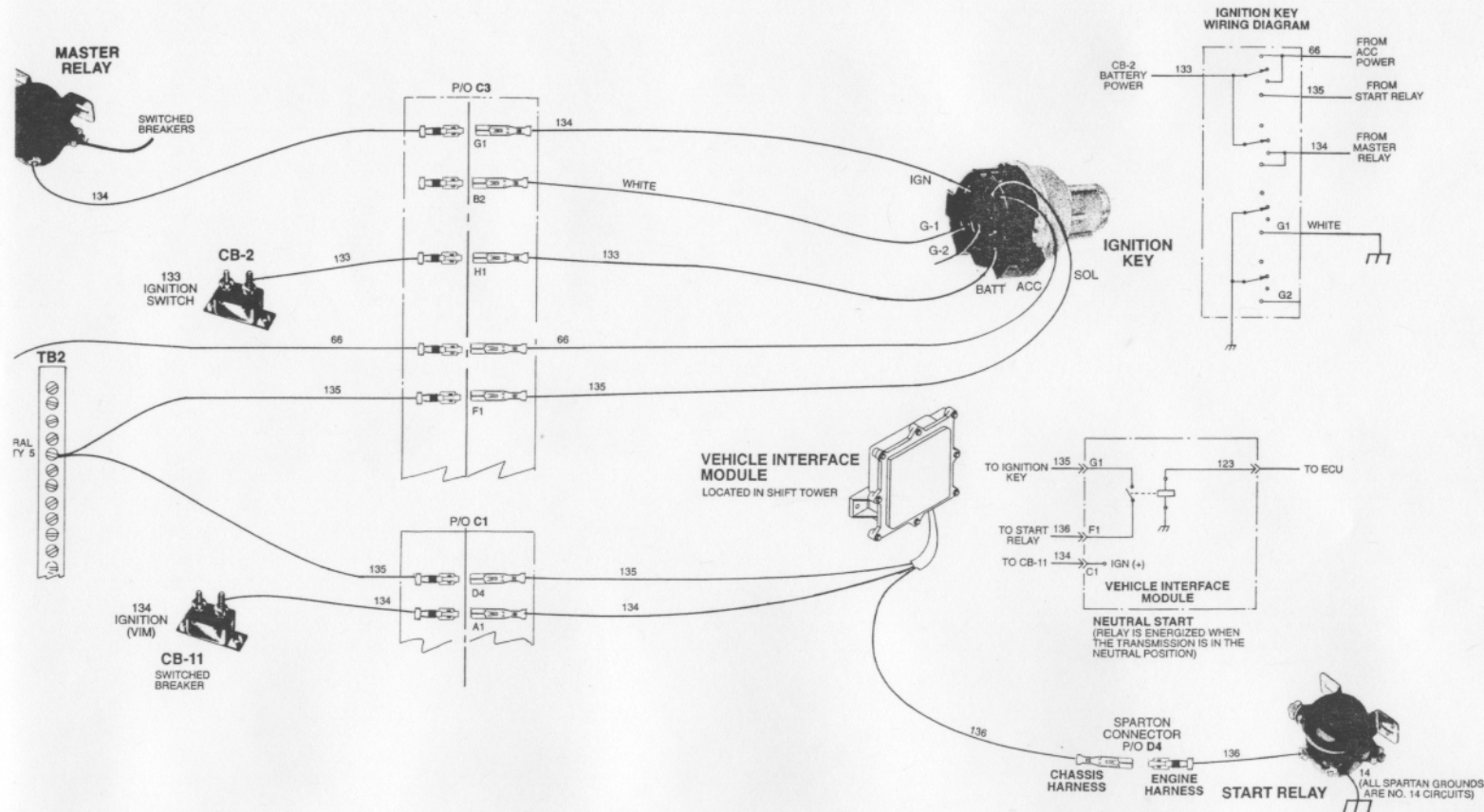
3

2

1

REVISIONS				DATE	APPROVED
ZONE	LTR	DESCRIPTION			

## ELECTRICAL BAY



DRAWING NO. 48666 SHT. 2 of 2  
ENT LOCATION.

AND PARTS ARE SUPPLIED

ARTAN SERVICE DEPARTMENT  
NAL INFORMATION.

QTY REQD	CODE IDENT	PART OR IDENTIFYING NO.	NOMENCLATURE OR DESCRIPTION
PARTS LIST			
UNLESS OTHERWISE SPECIFIED DIMENSIONS ARE IN INCHES TOLERANCES ARE FRACTIONS DECIMALS ANGLES		CONTRACT NO.	
xx ±		APPROVALS	
xxx ±		DATE	
MATERIAL		DRAWN 5.4 10-23-94	
FINISH		CHECKED SM 11-16-94	
DO NOT SCALE DRAWING		SCALE	

BEAVER COACHES 25545 Marney Road • Bend Oregon 97701 • 503-386-1144	
IGNITION SYSTEM - PATRIOT	
SIZE D	CODE IDENT NO. 48667
DRAWING NO. 48667	

8

7

6

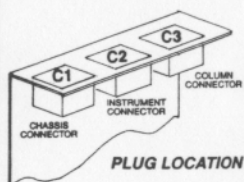
5

4

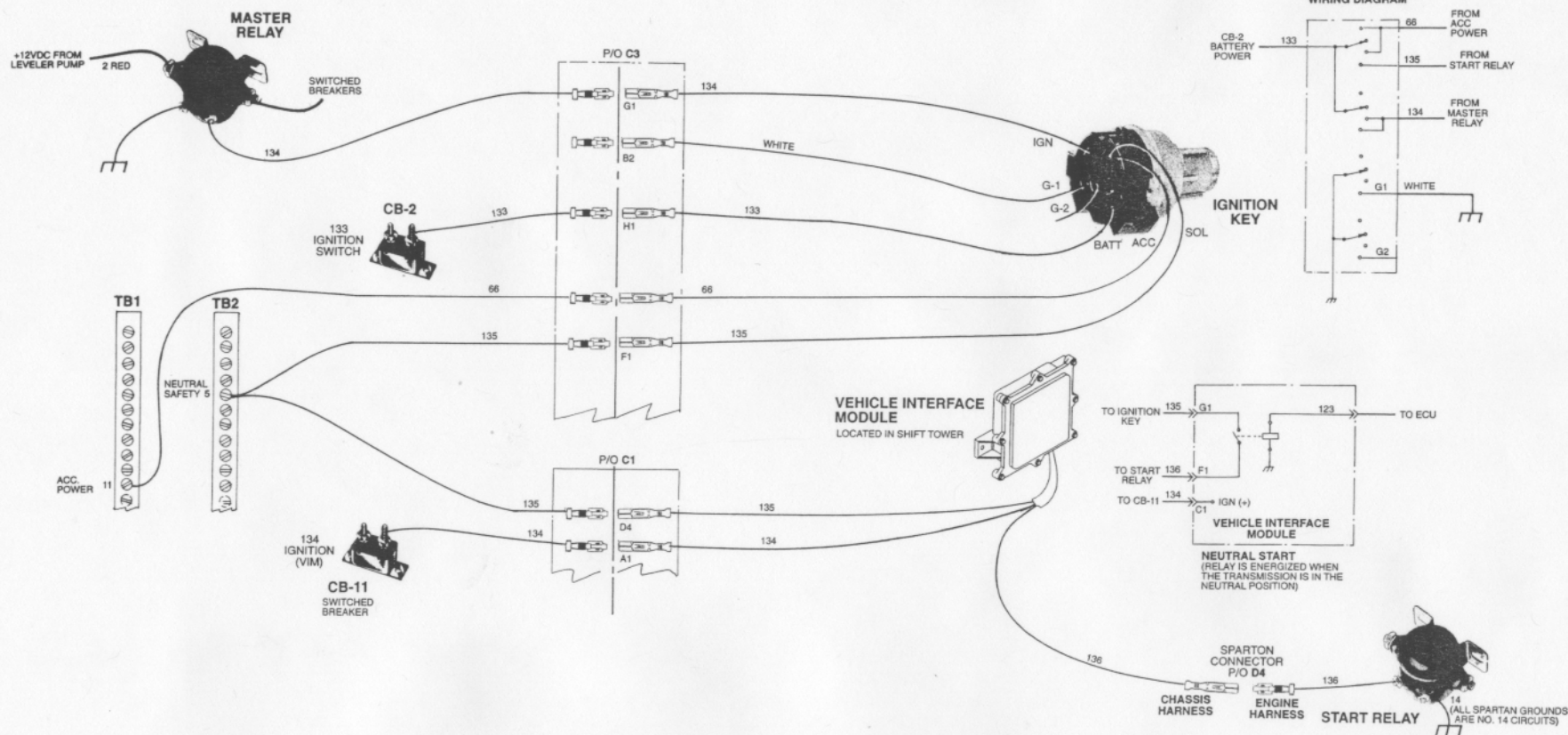
3

2

REVISIONS		
ZONE	LTR	DESCRIPTION



# ELECTRICAL BAY



**NOTE:** SEE DRAWING NO. 48666 SHT. 2 of 2 FOR COMPONENT LOCATION.

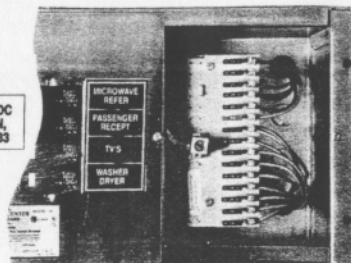








FOR PRIMARY DC  
DISTRIBUTION,  
SEE DWG E-0033



AC AND DC BREAKER PANEL  
LOCATED IN BEDROOM REAR  
OVERHEAD CABINET, DRIVER  
SIDE

15	AMP	BEDROOM LIGHTS	FUSE 15A	CKT 1
15	AMP	BATHROOM LIGHTS	FUSE 15A	CKT 2
15	AMP	KITCHEN LIGHTS	FUSE 15A	CKT 3
15	AMP	LIVING ROOM LIGHTS, PORCH	FUSE 15A	CKT 4
15	AMP	BAY LIGHTS, TV OUTLET	FUSE 15A	CKT 5
15	AMP	CB, RADIO, DASH STEREO, BOOST	FUSE 15A	CKT 6
15	AMP	KITCHEN, BATH FANS	FUSE 15A	CKT 7
20	AMP	REFRIGERATOR	FUSE 20A	CKT 8
15	AMP	FURNACE	FUSE 15A	CKT 9
15	AMP	WATER PUMP, WATER HEATER	FUSE 15A	CKT 10
7.5	AMP	LP GAS, G.O. DETECTORS	FUSE 7.5A	CKT 11
15	AMP	START BOOST	FUSE 15A	CKT 12
15	AMP	TV POWER FEED	FUSE 15A	CKT 13
15	AMP		FUSE 15A	CKT 14
15	AMP		FUSE 15A	CKT 15

### NOTE:

ALL GROUNDS RETURN  
TO GROUND BAR BEHIND  
THE AC / DC PANEL WHICH  
IS GROUNDED TO THE  
COACH CHASSIS.

CIRCUIT BREAKERS  
12V DC

LOAD

BEDROOM LIGHTS  
15 AMP

### NOTE:

ALL FUSES MUST BE REPLACED  
WITH ORIGINAL AMPERAGE

FUSE - BLADE TYPE ELECTRIC  
FUSE

BATHROOM LIGHTS  
15 AMP

WARDROBE  
LIGHT

TOILET  
COMPARTMENT  
CEILING LIGHT

CLOSET  
LIGHT

READING  
LIGHT

BEDROOM  
CEILING LIGHT

READING  
LIGHT

BATHROOM  
CEILING LIGHT

CEILING  
LIGHT  
BATHROOM

VANITY  
LIGHT

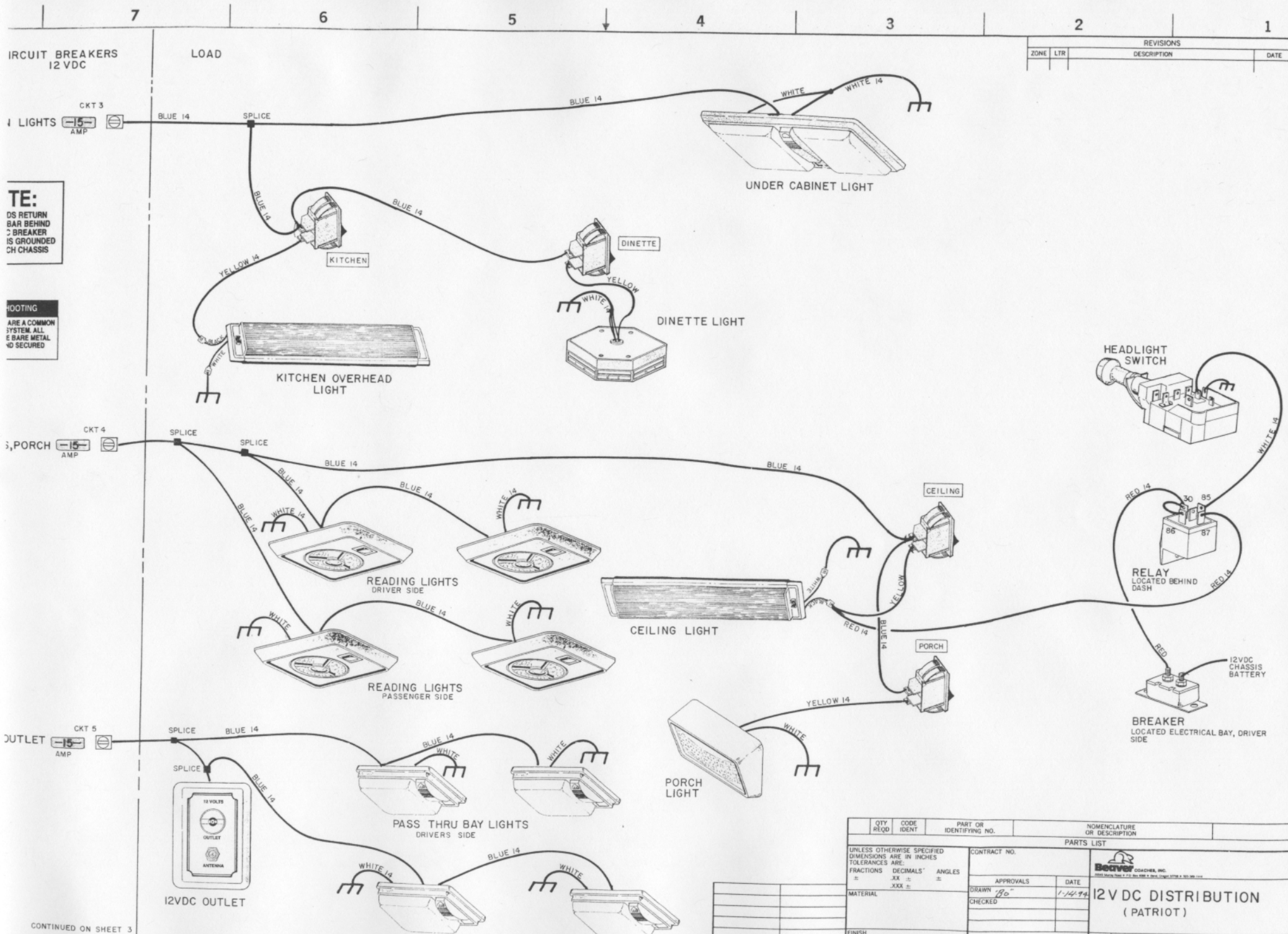
CEILING  
LIGHT

LOCATED BY  
CLOSET

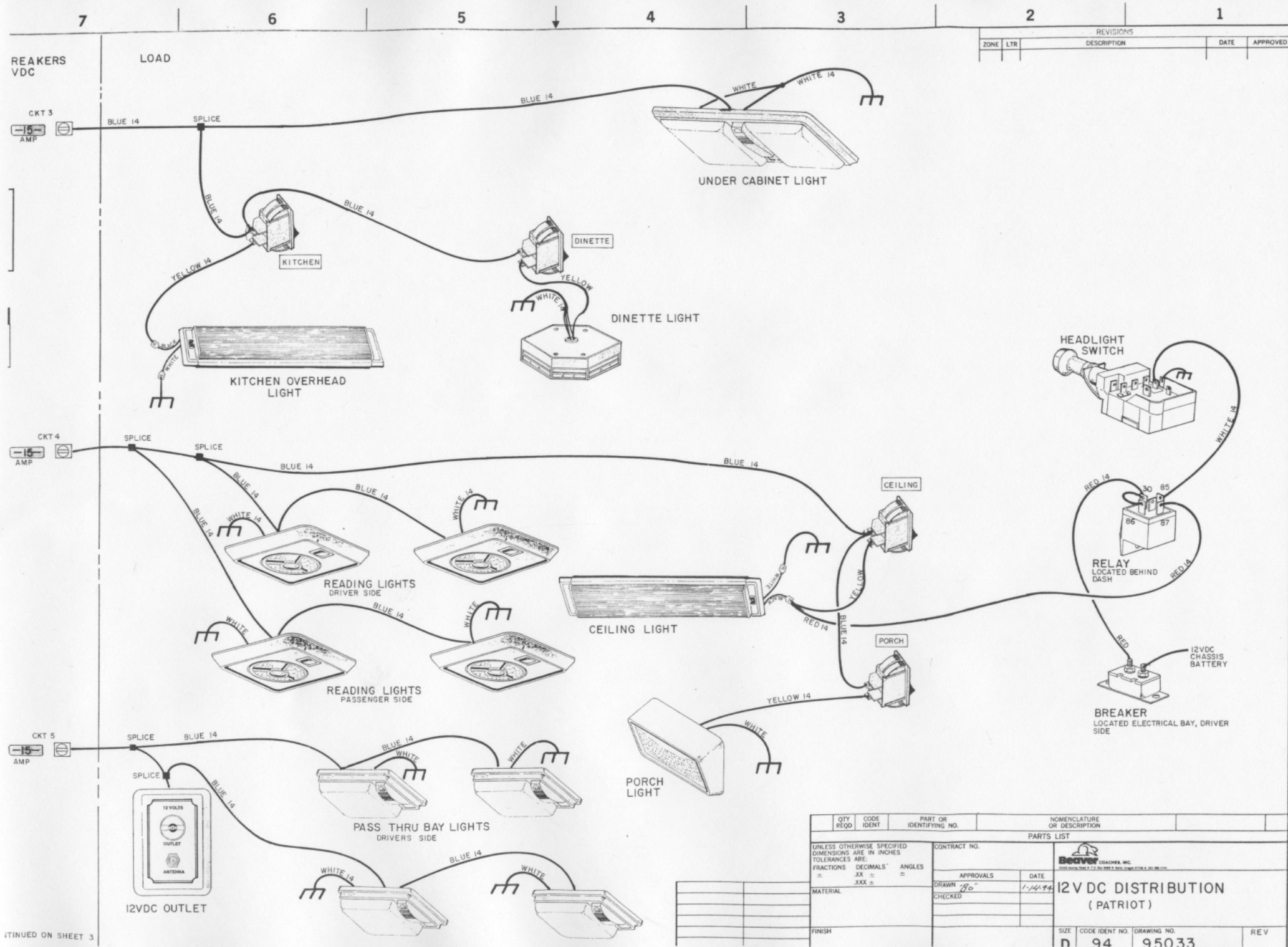
LOCATED ON FACE OF  
CABINET OVERHEAD

CONTINUED ON SHEET 2

QTY REQD	CODE IDENT	PART OR IDENTIFYING NO.	NOMENCLATURE OR DESCRIPTION
PARTS LIST			
UNLESS OTHERWISE SPECIFIED DIMENSIONS ARE IN INCHES TOLERANCES ARE: FRACTIONS DECIMALS ANGLES XX ± .005 XXX ± .010		CONTRACT NO. APPROVALS DATE DRAWN BY CHECKED	
MATERIAL		12V DC DISTRIE (PATRIOT)	
FINISH		SIZE CODE IDENT NO. DRAWING NO. D 94 95	







CONTINUED ON SHEET 3

CIRCUIT BREAKERS  
12 VDC

## LOAD

CKT 3  
KITCHEN LIGHTS 15 AMP

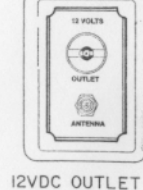
**NOTE:**  
ALL GROUNDS RETURN  
TO GROUND BAR BEHIND  
THE A/C, D/C BREAKER  
PANEL WHICH IS GROUNDED  
TO THE COACH CHASSIS

## TROUBLE SHOOTING

FAULTY GROUNDS ARE A COMMON  
FAULT IN THE 12V SYSTEM. ALL  
GROUNDS MUST BE BARE METAL  
TO BARE METAL AND SECURED  
TIGHTLY.

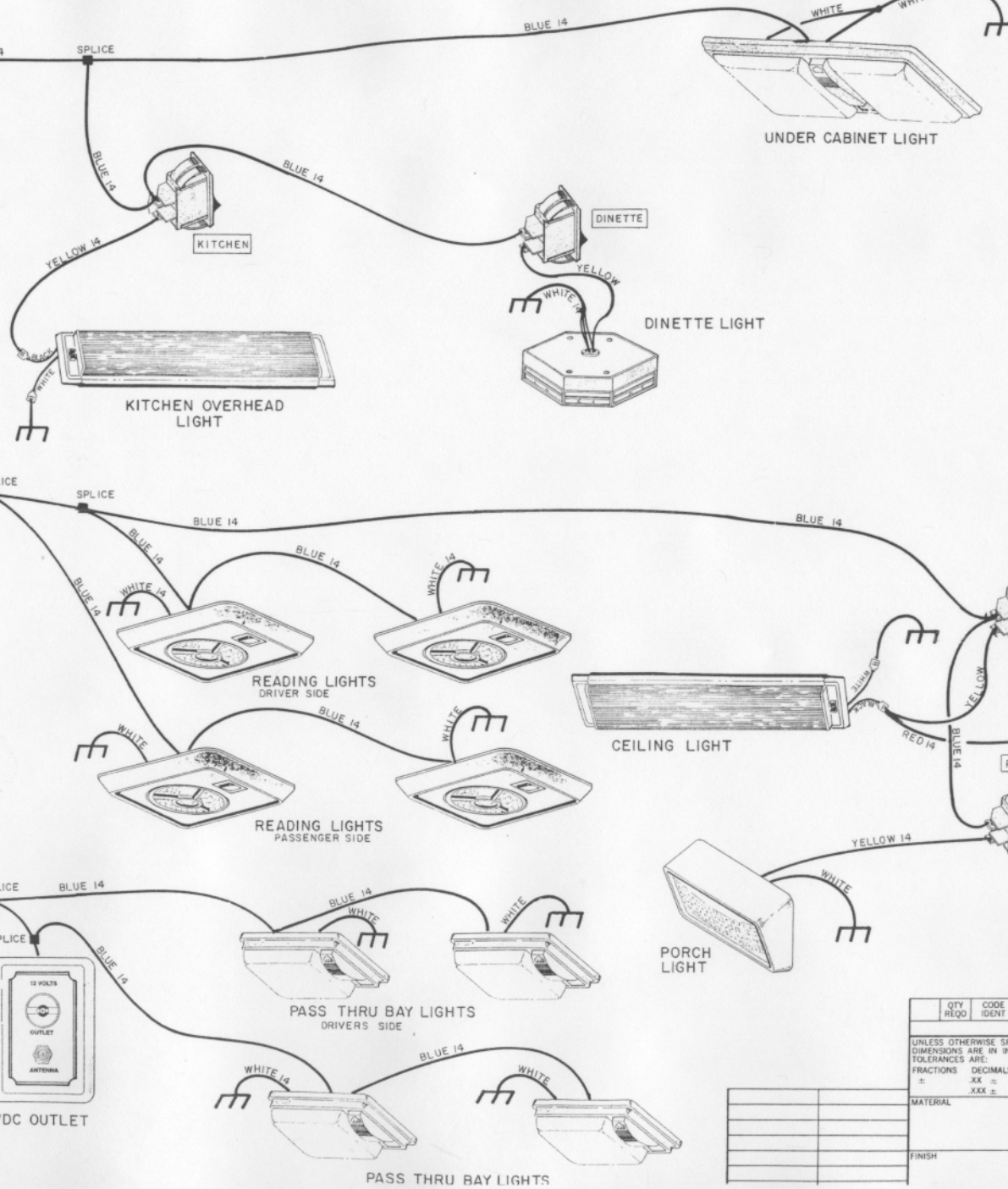
CKT 4  
LIVING ROOM LIGHTS, PORCH 15 AMP

CKT 5  
BAY LIGHTS, TV OUTLET 15 AMP



12VDC OUTLET

CONTINUED ON SHEET 3



UNDER CABINET LIGHT

DINETTE LIGHT

KITCHEN OVERHEAD LIGHT

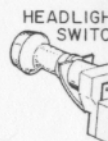
READING LIGHTS  
DRIVER SIDEREADING LIGHTS  
PASSENGER SIDE

CEILING LIGHT

PORCH LIGHT

PASS THRU BAY LIGHTS  
DRIVERS SIDE

PASS THRU BAY LIGHTS

HEADLIGHT  
SWITCHREL  
LOCAT  
DASHBRE  
LOCA  
SIDE

QTY REQD	CODE IDENT	PART OR IDENTIFYING NO.	NOMENCLATURE OR DESCRIPTION
			CONTRACT NO.
			APPROVALS
			DATE
			DRAWN
			CHECKED
			1-14-94
			12V DC (PAT)
			SIZE CODE IDENT
			D 94





WATER PUMP, WATER HEATER

REAR  
AIR CONDITIONER

FRONT  
AIR CONDITIONER

## LP GAS DETECTOR

MONITOR PANEL

WATER  
PUMP

WATER HEATER

CARBON MONOXIDE  
DETECTOR

THERMOSTATS  
LP GAS, C.O. DETECTORS


COLD WEATHER START  
TV ANTENNA  
BOOST

TV  
ANTENNA BOOST

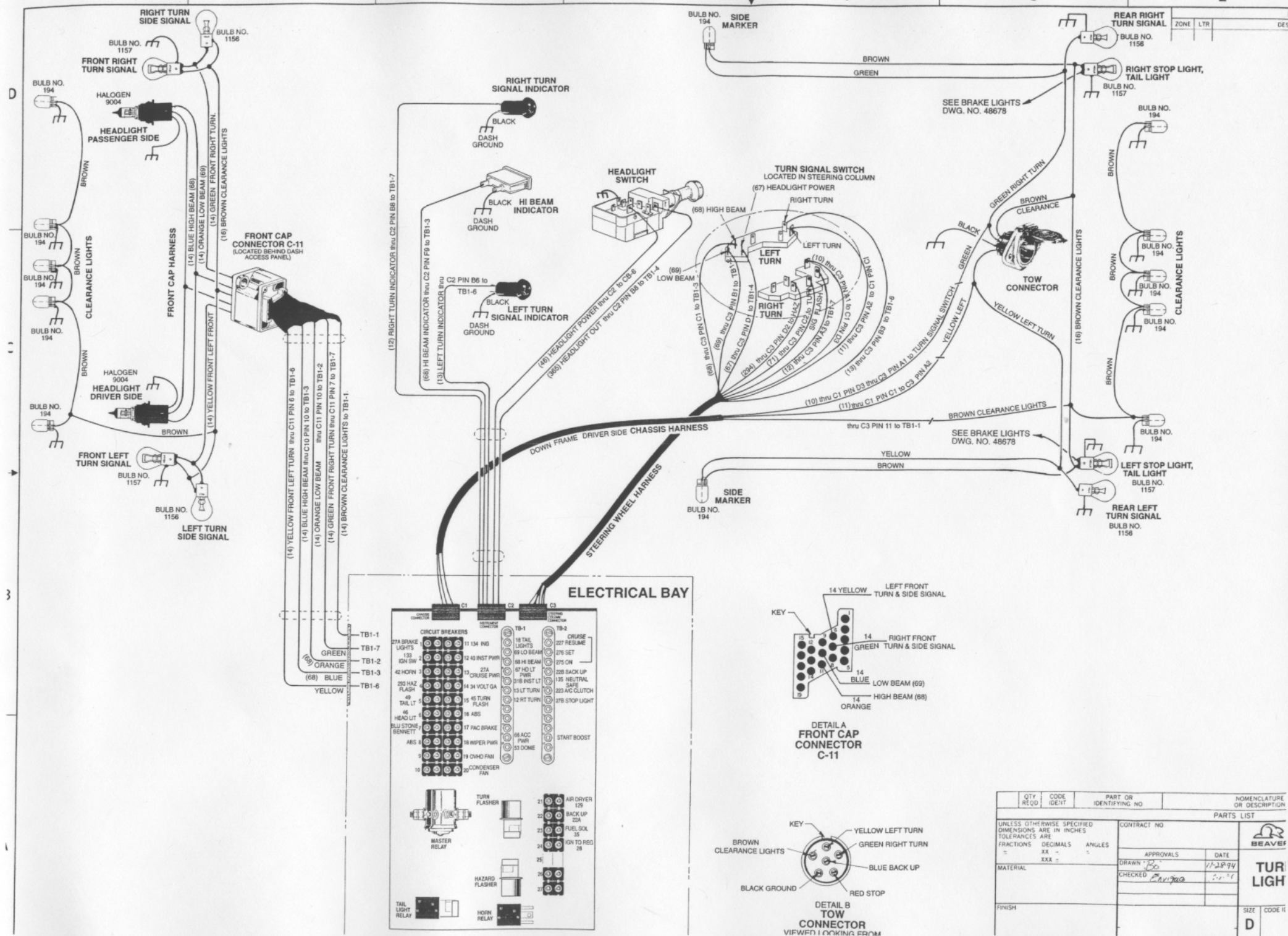
LOCATED IN  
FRONT OVERHEAD  
BEHIND AIR GRILL

COLD WEATHER

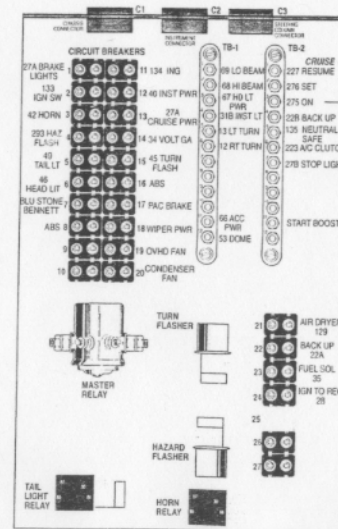
**COLD WEATHER  
START RELAY**  
LOCATED IN ELECTRICAL BOX

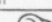
QTY REQD	CODE IDENT	PART OR IDENTIFYING NO.	NOMENCLATURE OR DESCRIPTION	
UNLESS OTHERWISE SPECIFIED DIMENSIONS ARE IN INCHES TOLERANCES ARE:			PARTS LIST	
FRACTIONS	DECIMALS	ANGLES	 BEAVER COACHES, INC. <small>1000 West 10th Street • P.O. Box 1000 • W. Fargo, N.D. 58101</small>	
±	.XX	±	APPROVALS	DATE
±	.XXX	±	DRAWN <i>Be</i>	<i>1-24-94</i>
MATERIAL			CHECKED	
FINISH				
			12VDC DIS (PAT	
			SIZE	CODE IDENT NO. D
			<b>D</b>	<b>94</b>

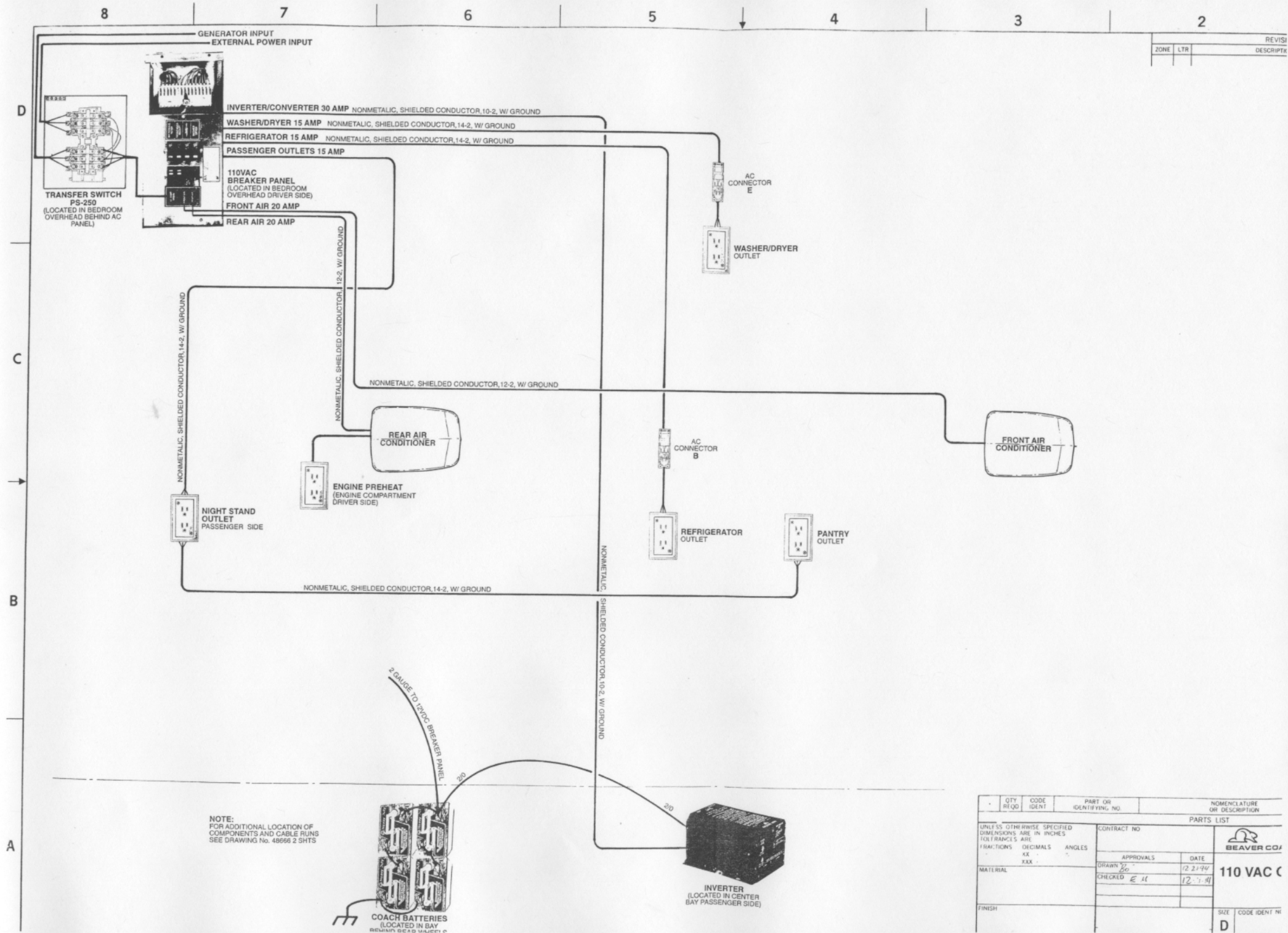




## FIREWALL



SET RUGS	CODE IDENT	PART OR IDENTIFYING NO	NOMENCLATURE OR DESCRIPTION	
			PARTS LIST	
UNLESS OTHERWISE SPECIFIED UNIT WEIGHTS ARE IN POUNDS SOLUBLE IN WATER		CENTRAL NO		 <b>BEAVER CO.</b>  <b>RIGHT DIAG</b>
FRAMES	DRUMS	ANULET		
	KY			
SEALED				
		APPROVALS	DATE	
		DRAWN BY	12.5.74	
		CHECKED		
FINISH				SIZE CODE IDENT NO
				<b>D</b>






**NOTE:**  
FOR ADDITIONAL LOCATION OF  
COMPONENTS AND CABLE RUNS  
SEE DRAWING No. 48666 2 SHTS

**COACH BATTERIES**  
(LOCATED IN BAY  
BEHIND REAR WHEELS,  
PASSENGER SIDE)

**INVERTER**  
(LOCATED IN CENTER  
BAY PASSENGER SIDE)

HEAT TAPE  
RECEPT. (LOCATED  
IN SECOND BAY,  
BETWEEN CHASSIS  
RAILS)

RECEPT (GFI)

QTY REQD	CODE IDENT	PART OR IDENTIFYING NO.	NOMENCLATURE OR DESCRIPTION	
UNLESS OTHERWISE SPECIFIED DIMENSIONS ARE IN INCHES TOLERANCES ARE			PARTS LIST	
FRACTIONS	DECIMALS	ANGLES	 <b>BEAVER COACHES</b> 20543 Murtry Road • Bend Oregon 97701 • 503	
1/16	.0031	30'	APPROVALS	DATE
			DRAWN - <i>P. E. H.</i>	12-29-95
MATERIAL			CHECKED - <i>EM</i>	12-29-95
FINISH			<b>110 VAC OUTPUT DISTRIBUTOR FROM INVERTER (ALL PATRIOT)</b>	
			SIZE	CODE IDENT NO. DRAWING NO.
DO NOT SCALE DRAWING			D	48518



