



**NOTE:** Diagnostic time is not covered by the Lippert Components, Inc. Limited Warranty

**PLEASE REFER TO OUR WEBSITE FOR THE LATEST VERSION OF THE FLAT RATE CHART**

**LCI FLAT RATE FOR SLIDEOUT AND LEVELING**

Part Replaced	Time Allotment	Part Return	LCI Prior Contact	Picture Required
<b>ELECTRIC SLIDE COMPONENTS</b>				
CHAIN DRIVE S/O BEARING <b>MAX</b>	3.00 HOURS	NO	YES	YES
S/O ACTUATOR	0.50 HOURS	YES	NO	NO
S/O ACT. MOUNT ASSY	0.80 HOURS	NO	NO	YES
S/O MOTOR <b>**ALL TYPES EXCEPT HAPPIJAC**</b>	0.50 HOURS	YES	NO	NO
S/O CONTROLLER	0.50 HOURS	YES	NO	NO see page 18
GEAR PACK ASSY <b>EACH SIDE</b>	0.50 HOURS	NO	YES	YES
HEAD ASSY	0.50 HOURS	NO	YES	YES
ROLLERS	1.00 HOUR	NO	YES	YES
INNER AND GEAR RACK ASSY	1.00 HOUR	NO	YES	YES
FLEXGUARD	0.30 HOURS	NO	NO	YES
CROSS SHAFT	0.50 HOURS	NO	NO	YES
CROSS SHAFT BOLT	0.30 HOURS	NO	NO	YES
ROOM BAR	0.50 HOURS	NO	YES	YES
<b>POWER GEAR ELEC. SLIDE</b>				
12 VDC MOTOR (BELOW FLOOR)	1.00 HOUR	NO	NO	YES
12 VDC MOTOR (ABOVE FLOOR)	1.00 HOUR	NO	NO	YES
BREAKER RELAY BOARD (14-1098/ 14-1130)	0.80 HOUR	NO	NO	YES
CIRCUIT BREAKER	0.50 HOUR	NO	YES	YES
PROGRAMMABLE CONTROL BOX	1.10 HOUR	YES	NO	NO see page 18
CONTROLLER & RESET (FULL WALL)	2.00 HOURS	YES	NO	NO
CURRENT LIMIT/SENSING CONTROL	0.80 HOUR	YES	NO	NO
GEAR SHEER PIN- DRIVE SIDE	1.00 HOUR	NO	NO	YES
GEAR SHEER PIN- IDLER SIDE	1.00 HOUR	NO	NO	YES
IN / OUT SWITCH	0.50 HOUR	YES	NO	NO
KEY SWITCH	0.50 HOUR	YES	NO	NO
DIGI SYNC (KWIKEE) ENCODER	1.30 HOURS	YES	NO	NO
DIGI SYNC (KWIKEE) LINEAR ACTUATOR	2.30 HOURS	YES	NO	NO
DIGI SYNC (KWIKEE) LINEAR DRIVE CONTROL	0.80 HOUR	YES	NO	NO
DIGI SYNC (KWIKEE) OPERATOR PANEL	0.80 HOUR	YES	NO	NO
<b>POWER GEAR ELECTRIC INWALL SLIDE</b>				
POWER GEAR INWALL SLIDE TOUCH PAD	0.80 HOUR	YES	NO	NO see page 18
POWER GEAR INWALL SLIDE CONTROL BOX	1.10 HOUR	YES	NO	NO see page 18
POWER GEAR INWALL SLIDE HARNESS	0.30 HOUR	YES	NO	NO
POWER GEAR INWALL SLIDE MOTOR/ ENCODER	1.00 HOUR	YES	NO	NO
POWER GEAR INWALL SLIDE END BRACKETS	0.50 HOUR	NO	NO	YES
POWER GEAR INWALL SLIDE GEAR RACK	1.00 HOUR	NO	NO	YES

IF THE RV IS OUTSIDE OF THE UNITED STATES AND THE INVOLVED ITEM IS LISTED AS A REQUIRED PART RETURN LCI DOES REQUIRE PHOTOS IN PLACE OF THE PART RETURN, THIS IS APPLICABLE **ONLY** TO UNITS OUTSIDE OF THE UNITED STATES.

**LCI FLAT RATE FOR SLIDEOUT AND LEVELING (continued)**

Part Replaced	Time Allotment	Part Return	LCI Prior Contact	Picture Required
<b>LCI FLAT RATE FOR SCHWINTEK INWALL SLIDEOUT SYSTEM</b>				
CHANGE MOTOR ONLY	1.00 HOUR	YES	NO	NO
CHANGE WIRE HARNESS ONLY	0.40 HOURS	YES	NO	NO
INSTALL IN-WALL REPAIR KIT (includes Column R/R)	2.20 HOURS	NO	YES	YES
CHANGE COMPLETE COLUMN (PER SIDE)	1.50 HOURS	NO	YES	YES
CHANGE BRAIN/ CONTROLLER ONLY	0.30 HOURS	YES	NO	NO see page 18
CHANGE WALL SWITCH ONLY (3-PRONG)	0.30 HOURS	YES	NO	NO
<b>HYDRAULICE SLIDE OUT COMPONENTS</b>				
HYD PUMP	1.00 HOUR	YES	NO	NO
HYD HOSES	0.50 HOURS	SEE LAST PAGE***	NO	YES
SOLENOID	0.30 HOURS	YES	NO	NO
IRC CONTROL VALVE	0.30 HOURS	YES	NO	NO
HYD CYLINDER	0.80 HOURS	YES	NO	NO
SWITCH	0.30 HOURS	YES	NO	NO
HYDRAULIC VALVE	0.30 HOURS	YES	NO	NO
ROOM BAR	0.50 HOURS	NO	YES	YES
<b>POWER GEAR HYD. SLIDES</b>				
HYDRAULIC (POWER GEAR) CABLE ASSEMBLY	1.30 HOURS	NO	YES	YES
HYDRAULIC (POWER GEAR) HYDRAULIC CYLINDERS	1.00 HOUR	NO	NO	YES
HYDRAULIC (POWER GEAR) LEG VALVE COIL	1.00 HOUR	NO	YES	YES
HYDRAULIC (POWER GEAR) O-RING SEALS PUMP	2.00 HOURS	NO	YES	YES
HYDRAULIC (POWER GEAR) PUMP	1.30 HOURS	NO	NO	YES
HYDRAULIC (POWER GEAR) PUMP MOTOR	1.00 HOUR	NO	NO	YES

<sup>1</sup>UNIT W/ UNDERBELLY ADD 1.0 HOUR

\* NOTE LCI DOES NOT WARRANTY S/O ADJUSTMENT ISSUES

<b>MOTORIZED / TOWABLE LEVELING - LEVEL UP - HYDRAULIC LANDING GEAR COMPONENTS</b>					
STAND.HYD. LANDING GEAR LEG PIN / PINNLESS	<b>PER LEG</b>	1.50 HOURS	NO	NO	YES
ALUMINUM HYD. LANDING GEAR LEGS - 14K	<b>PER LEG</b>	1.00 HOUR	NO	NO	YES
HYDRAULIC LANDING GEAR PULL PIN		0.20 HOURS	NO	NO	YES
ALL HYDRAULIC LEVELING JACKS      STEEL:	<b>PER JACK</b>	1.00 HOUR	NO	NO	YES
7K-12K-22K; ALUMINUM: 8K-14K-20K					
(MTZD) LEVELING PUMP ONLY NO S/O - (TOW) LEVEL UP PUMP		1.50 HOURS	YES	NO	NO
(MTZD) LEVELING PUMP + S/O		3.00 HOURS	YES	NO	NO
PRESSURE SWITCH		0.30 HOURS	YES	NO	NO
TOUCH PAD		0.30 HOURS	YES	NO	NO see page 18
BRAIN BOX + PROGRAMMING		0.50 HOURS	YES	NO	NO see page 18
LEVELING HARNESS		0.50 HOURS	YES	NO	NO
PUMP MOTOR ONLY		0.50 HOURS	YES	NO	NO
SOLENOID		0.30 HOURS	YES	NO	NO
REAR SENSOR		0.30 HOURS	YES	NO	NO see page 18
HYDRAULIC VALVE		0.30 HOURS	YES	NO	NO
FLOW DIVIDER		0.30 HOURS	YES	NO	NO

IF THE RV IS OUTSIDE OF THE UNITED STATES AND THE INVOLVED ITEM IS LISTED AS A REQUIRED PART RETURN LCI DOES REQUIRE PHOTOS IN PLACE OF THE PART RETURN, THIS IS APPLICABLE **ONLY** TO UNITS OUTSIDE OF THE UNITED STATES.

**LCI FLAT RATE FOR SLIDEOUT AND LEVELING (continued)**

Part Replaced	Time Allotment	Part Return	LCI Prior Contact	Picture Required
<b>POWER GEAR HYD LEVELING</b>				
HYD. (POWER GEAR) FLUID TANK	1 HOUR	NO	NO	YES
HYD. (POWER GEAR) HOSE	1.30 HOURS	YES	YES	NO
HYD. (POWER GEAR) PUMP MOTOR/ GEAR UNIT	1.50 HOURS	NO	YES	YES
HYD. (POWER GEAR) SPRING RETURN JACK VAVE ASSEMBLY	0.50 HOURS	NO	YES	YES
HYD. (POWER GEAR) SPRING RETURN JACK SEAL KIT	1.50 HOURS	NO	YES	YES
HYD. (PG) POWER UP POWER DOWN LEVELING CONTROL BOX	1 HOUR	YES	NO	NO see page 18
HYD. (PG) TOUCH PAD	1 HOUR	YES	NO	NO see page 18
HYD. (PG) POWER UP POWER DOWN LEVELING JACK LEGS	1 HOUR	NO	NO	YES
HYD. (PG) POWER UP POWER DOWN JACK VALVE ASSEMBLY	1.30 HOURS	NO	NO	YES
HYD. (PG) SPRING RETURN HYD LEVELING JACK LEG	1 HOUR	NO	NO	YES
HYD. (PG) SPRING RETURN HYD LEVELING CONTROL BOX	1 HOUR	YES	YES	NO
HYD. (PG) FLUID SENSOR	0.50 HOURS	YES	YES	NO
(PG) PRESSURE SWITCH	0.50 HOURS	YES	NO	NO
(PG) HYDRAULIC PUMP MOTOR	1 HOUR	NO	NO	YES
<b>POWER GEAR LEVEL BEST (KWIKEE)</b>				
LEVEL BEST (KWIKEE) CYLINDER	0.90 HOUR	NO	NO	YES
LEVEL BEST (KWIKEE) CONTROL	1.00 HOUR	YES	NO	NO see page 18
LEVEL BEST (KWIKEE) HOSE	1.00 HOUR	YES	NO	NO
LEVEL BEST (KWIKEE) LEG	0.20 HOUR	NO	NO	YES
LEVEL BEST (KWIKEE) LEVEL SENSOR	1.00 HOUR	YES	NO	NO see page 18
LEVEL BEST (KWIKEE) O-RING	1.00 HOUR	NO	NO	YES
LEVEL BEST (KWIKEE) PUMP/ MANIFOLD/ RESERVOIR	2.00 HOURS	NO	NO	YES
LEVEL BEST (KWIKEE) REED SWITCH	0.60 HOUR	NO	NO	YES
LEVEL BEST (KWIKEE) SOLENOID (PUMP)	0.80 HOUR	NO	NO	YES
LEVEL BEST (KWIKEE) VALVE (2-WAY OR 4-WAY)	0.80 HOUR	NO	NO	YES
<b>ELECTRIC LANDING GEAR AND LEVELING COMPONENTS</b>				
LG LEG PAIR (PAC RIM - NO RETURN)	1.00 HOUR	YES	NO	NO
LG GEAR BOX (PAC RIM - NO RETURN)	0.50 HOURS	YES	NO	NO
PULL PIN	0.20 HOURS	NO	NO	YES
LG MANUAL CRANK <b>MOVE HOLE</b>	1.00 HOUR	NO	NO	YES
LG SWITCH	0.30 HOURS	YES	NO	NO
LG MOTOR <b>(1 MOTOR)</b>	0.50 HOURS	YES	NO	NO
GEAR REDUCTION BOX	0.50 HOURS	YES	NO	NO
LG X SHAFT	0.30 HOURS	NO	NO	YES
<b>POWER GEAR ELEC. LEVELING</b>				
ELEC. (POWER GEAR) 12 VDC MOTOR	1.20 HOURS	YES	NO	NO
ELEC. (POWER GEAR) BRAKE KIT (PER JACK)	0.50 HOUR	NO	NO	YES
ELEC. (POWER GEAR) BOOT KIT (PER JACK)	0.20 HOUR	NO	NO	YES
ELEC. (POWER GEAR) CONTROL BOX	1.00 HOUR	YES	NO	NO see page 18
ELEC. (POWER GEAR) CONTROL PANEL (TOUCH PAD)	1.00 HOUR	YES	NO	NO see page 18
ELEC. LEVELING HARNESS	0.50 HOURS	YES	NO	NO
ELEC. (POWER GEAR) JACK ASSEMBLY	0.80 HOUR	YES	NO	NO
ELEC. (POWER GEAR) JACK PIN KIT (PER JACK)	1.40 HOURS	NO	NO	YES

IF THE RV IS OUTSIDE OF THE UNITED STATES AND THE INVOLVED ITEM IS LISTED AS A REQUIRED PART RETURN LCI DOES REQUIRE PHOTOS IN PLACE OF THE PART RETURN, THIS IS APPLICABLE **ONLY** TO UNITS OUTSIDE OF THE UNITED STATES.

**LCI FLAT RATE FOR GROUND CONTROL II - 4- & 6 - POINT ELECTRIC FIFTH WHEEL LEVELING**

Part Replaced	Time Allotment	Part Return	LCI Prior Contact	Picture Required
FRONT LEG	0.50 HOURS	NO	NO	YES
REAR LEG	0.50 HOURS	NO	NO	YES
PULL PIN	0.20 HOURS	NO	NO	YES
LG MANUAL CRANK <b>MOVE HOLE</b>	1.00 HOUR	NO	NO	YES
TOUCH PAD	0.30 HOURS	YES	NO	NO see page 18
GEAR REDUCTION BOX	0.50 HOURS	NO	NO	YES
GROUND CONTROL LEVELING HARNESS- MIDDLE/REAR	1.5 HOURS	YES	NO	NO
GROUND CONTROL LEVELING HARNESS- FRONT	0.50 HOURS	YES	NO	NO
GROUND CONTROL - JACK CONTROLLER	0.50 HOURS	YES	NO	NO see page 18
MOTOR <b>(1 MOTOR)</b>	0.50 HOURS	NO	NO	YES

**LCI FLAT RATE FOR CHASSIS  
FRAME/CHASSIS COMPONENTS**

SAFETY CHAIN	0.50 HOURS	NO	NO	YES
MANUAL TONGUE JACK	0.50 HOURS	NO	NO	YES
POWER TONGUE JACK- COMPLETE	0.50 HOURS	NO	NO	YES
POWER TONGUE JACK LIGHT	0.20 HOURS	NO	NO	YES
POWER TONGUE JACK LIGHT SWITCH	0.20 HOURS	NO	NO	YES
POWER TONGUE JACK EXTEND/ RETRACT SWITCH	0.20 HOURS	NO	NO	YES
SCISSOR JACK	0.50 HOURS	NO	NO	YES
PINBOX REPAIR	0.50 HOURS	NO	YES	YES
PINBOX REPLACE	0.80 HOURS	NO	YES	YES
TRI-GLIDE AIR SPRING REPLACE	0.50 HOURS	YES	NO	NO
TRI-GLIDE PIN BOX LOWER JAW REPLACE	1.00 HOUR	NO	YES	YES
TRI-GLIDE ROD AND BUSHINGS REPLACE	0.30 HOURS	NO	YES	YES
SCHRADER VALVE FOR TRI GLIDE AIR SPRING	0.20 HOURS	YES	YES	NO
OUTRIGGERS	VARIES	VARIES	YES	Y see page 16
SPRING HANGER 1	2.50 HOURS	NO	YES	Y see page 16
SPRING HANGER 3 ONE SIDE	3.50 HOURS	NO	YES	Y see page 16
SPRING HANGER 6 BOTH SIDES	5.00 HOURS	NO/YES IF SNAP AT EAR	YES	Y see page 16
SPRING HANGERS 8 BOTH SIDE	6.00 HOURS	NO	YES	Y see page 16
CORRECT TRACK	1 HOUR	NO	YES	YES
SLIDING LP TRAY	0.50 HOURS	NO	YES	Y see page 16
BUMPER REPAIR	0.50 HOURS	NO	NO	Y see page 16
SPARE TIRE WINCH	0.50 HOURS	NO	NO	Y see page 16
SPARE TIRE CARRIER	0.50 HOURS	NO	NO	Y see page 16
COMPLETE MANUAL STEP REPLACEMENT	0.50 HOURS	NO	NO	YES
STEPS PAINT ISSUE (2)	VARIES	NO	NO	YES
HITCH ASSY PAINT (2)	0.50 HOURS	NO	YES	Y see page 16
REAR BUMPER ASSY PAINT (2)	0.50 HOURS	NO	YES	Y see page 16
PIN BOX ASSY PAINT (2)	0.50 HOURS	NO	YES	YES
RAMP DOOR FRAME PAINT (2)	1.00 HOUR	NO	YES	Y see page 16
RAMP DOOR – all other issues	1.00 HOUR	NO	YES	Y see page 16
R & R COUPLER	0.80 HOURS	NO	NO	Y see page 16
ELECTRIC STAB JACK SWITCH	0.30 HOURS	YES	NO	NO
R & R ENTIRE ELEC. STAB JACK	1.00 HOUR	NO	NO	YES
R & R MOTOR - ELEC. STAB JACK C-800 motor	0.50 HOURS	NO	NO	YES
SHEAR PIN- ELEC. STAB JACK (BROKEN)	0.50 HOURS	NO	NO	YES

IF THE RV IS OUTSIDE OF THE UNITED STATES AND THE INVOLVED ITEM IS LISTED AS A REQUIRED PART RETURN LCI DOES REQUIRE PHOTOS IN PLACE OF THE PART RETURN, THIS IS APPLICABLE **ONLY** TO UNITS OUTSIDE OF THE UNITED STATES.

**ATWOOD PRODUCTS**

**BRAKE SYSTEM**

Part Replaced	Time Allotment	Part Return	LCI Prior Contact	Picture Required
COMPLETE ACTUATOR: BOLT ON	1.00 HOUR	YES	YES	NO
COMPLETE ACTUATOR: WELD ON	2.00 HOURS	YES	YES	NO
RELEASE HANDLE	1.00 HOUR	YES	YES	NO
FOUNDATION BRAKES (PER AXLE)	1.50 HOURS	YES	YES	NO

**COUPLER**

COMPLETE COUPLER: BOLT ON	0.50 HOURS	YES	YES	NO
COMPLETE COUPLER: WELD ON	1.50 HOURS	YES	YES	NO

**DURALEG**

KEY PAD	0.50 HOURS	YES	YES	NO
COMPLETE JACK LEG (PER LEG)	0.80 HOURS	YES	YES	NO

**5TH WHEEL LANDING LEG**

BOTH LEGS**	1.50 HOURS	YES	YES	NO
ONE (1) LEG **	0.80 HOURS	YES	YES	NO
BEVEL GEARS (PER LEG)	0.80 HOURS	YES	YES	NO
CAP	0.30 HOURS	YES	YES	NO
GEAR BOX	0.80 HOURS	YES	YES	NO
MOTOR	0.50 HOURS	YES	YES	NO
SWITCH	0.50 HOURS	YES	YES	NO
CONTROL BOX #66574	0.50 HOURS	YES	YES	NO

\*\* INNER RAM NOT AVAILABLE, REPLACE APPROPRIATE LEG.

**LEVELEGS**

FRONT LEGS (PER LEG)	0.80 HOURS	YES	YES	NO
REAR LEGS (PER LEG)	1.00 HOUR	YES	YES	NO
RELAY CONTROL	0.80 HOURS	YES	YES	NO
KEY PAD	0.80 HOURS	YES	YES	NO see page 18

\* RATE TIME INCLUDES THE RESETTING OF THE AUTO SEQUENCES

**TOP WIND JACK**

COMPLETE JACK: BOLT ON	0.50 HOURS	NO	YES	YES
COMPLETE JACK: WELD ON	1.00 HOUR	NO	YES	YES
BEARING	1.00 HOUR	NO	YES	YES
HANDLE	0.50 HOURS	NO	YES	YES

**BALL SCREW CAMPER JACK**

<b>ELECTRIC:</b>				
COMPLETE JACK	0.50 HOURS	NO	YES	YES
BEVEL GEARS	0.80 HOURS	NO	YES	YES
BRACKETS	0.50 HOURS	NO	YES	YES
COVER TOP- BOTTOM	0.30 HOURS	NO	YES	YES
MOTOR	0.50 HOURS	NO	YES	YES
MOTOR SWITCH	0.50 HOURS	YES	YES	NO
2-WAY/ 4-WAY PLUG	0.50 HOURS	NO	YES	YES
TRUCK JACK REMOTE CONTROL	0.10 HOURS	YES	YES	NO
RELAY CONTROL MODULE	1.00 HOUR	YES	YES	NO
ACTIVATION SWITCH	0.50 HOURS	YES	YES	NO
<b>MANUAL:</b>				
COMPLETE JACK (.3 ADDED FOR EACH ADDITIONAL JACK)	0.50 HOURS	NO	YES	YES
COVER	0.30 HOURS	NO	YES	YES
BEVEL GEARS	0.80 HOURS	NO	YES	YES
BRACKETS	0.50 HOURS	NO	YES	YES

IF THE RV IS OUTSIDE OF THE UNITED STATES AND THE INVOLVED ITEM IS LISTED AS A REQUIRED PART RETURN LCI DOES REQUIRE PHOTOS IN PLACE OF THE PART RETURN, THIS IS APPLICABLE ONLY TO UNITS OUTSIDE OF THE UNITED STATES.

**ATWOOD PRODUCTS (continued)**

**POWER JACK**

Part Replaced	Time Allotment	Part Return	LCI Prior Contact	Picture Required
COMPLETE JACK	0.50 HOURS	NO	YES	YES
COVER	0.30 HOURS	NO	YES	YES
LENS	0.30 HOURS	NO	YES	YES
LIGHT SOCKET	0.30 HOURS	NO	YES	YES
LIGHT SWITCH	0.30 HOURS	NO	YES	YES
MOTOR	0.50 HOURS	NO	YES	YES
MOTOR SWITCH	0.30 HOURS	NO	YES	YES

**SIDE WIND JACK**

COMPLETE JACK: BOLT ON	0.50 HOURS	NO	YES	YES
COMPLETE JACK: WELD ON	0.50 HOURS	NO	YES	YES
BEVEL GEARS	0.50 HOURS	NO	YES	YES
COVER	0.50 HOURS	NO	YES	YES
HANDLE	0.50 HOURS	NO	YES	YES

**STABILIZER JACK**

COMPLETE JACK	0.50 HOURS	NO	YES	YES

**LCI FLAT RATE FOR COACH STEP**

Part Replaced	Time Allotment	Part Return	LCI Prior Contact	Picture Required
REPLACING SLIDE STEP RAIL (for 1 rail, add .3 for additional rails)	0.80 HOURS	NO	NO	YES
REPLACING STEP BUSHINGS ON A SINGLE STEP	0.20 HOURS	NO	NO	YES
REPLACING STEP BUSHINGS ON A DOUBLE STEP	0.30 HOURS	NO	NO	YES
REPLACNG STEP BUSHINGS ON A TRIPLE STEP	0.50 HOURS	NO	NO	YES
REPLACING THE LIGHT	0.20 HOURS	NO	NO	YES
REPLACING THE MOTOR	0.50 HOURS	NO	NO	YES
REPLACING THE MODULE	0.50 HOURS	YES	NO	NO see page 18
REPLACING THE GEAR	0.30 HOURS	NO	NO	YES
REPLACING BALL JOINT ASSEMBLY (LINKAGE)	0.30 HOURS	NO	NO	YES
REPLACING THE ENTIRE ASSEMBLY	0.50 HOURS	NO	NO	YES
REPLACE THE BROKEN SHOULDER BOLT	0.80 HOURS	NO	NO	YES
REPLACING ANTI SKID TAPE/ PER STEP	0.20 HOURS	NO	NO	YES

**(2) Need color pictures for all rust/ paint issues**

**POWER GEAR STEP**

ELECTRIC (KWIKEE) CONTROL UNIT	0.60 HOUR	YES	NO	NO see page 18
ELECTRIC (KWIKEE) DOOR SWITCH	0.50 HOUR	YES	NO	NO
ELECTRIC (KWIKEE) FRAME (COMPLETE STEP)	1.00 HOUR	NO	NO	YES
ELECTRIC (KWIKEE) GEAR/ GEAR CASE	0.80 HOUR	NO	NO	YES
ELECTRIC (KWIKEE) LINKAGE	0.30 HOUR	NO	NO	YES
ELECTRIC (KWIKEE) MOTOR	0.60 HOUR	NO	NO	YES
PG STEP WELL COVER LINEAR ACTUATOR	1 HOUR	YES	YES	NO
PG STEP WELL COVER W/LINEAR ACTUATOR LIMIT SWITCH	0.50 HOURS	YES	YES	NO
PG STEP WELL COVER W/ LINEAR ACT. HARNESS	0.30 HOURS	YES	YES	NO

IF THE RV IS OUTSIDE OF THE UNITED STATES AND THE INVOLVED ITEM IS LISTED AS A REQUIRED PART RETURN LCI DOES REQUIRE PHOTOS IN PLACE OF THE PART RETURN, THIS IS APPLICABLE **ONLY** TO UNITS OUTSIDE OF THE UNITED STATES.

LCI FLAT RATE FOR AXLE SERVICE				
Part Replaced	Time Allotment	Part Return	LCI Prior Contact	Picture Required
<b>GENERAL INFORMATION - Operation &amp; Description</b>				
<b>2K-7K Axle</b>				
TURN HUB & DRUM DIAMETER - WITH SIGNED WAIVER	PAR	NO	YES	Y see page 16
<b>AXLE BEAMS - Operation &amp; Description</b>				
R&R COMPLETE AXLE ASSEM, INCLUDES RECONNECTING & TESTING	1.00 HOUR	YES	YES	Y see page 16
R&R AXLE ASSEM- TORSION AXLE BOLTED TO FRAME	0.80 HOURS	NO	YES	Y see page 16
R&R AXLE BEAM,INCLUDES R&R HUBS AND BRAKES &TESTING	1.50 HOURS	YES	YES	Y see page 16
R&R TORSION AXLE BEAM, INCLUDES R&R HUBS AND BRAKES & TESTING	1.50 HOURS	NO	YES	Y see page 16
<b>BRAKES - Electric - Operation &amp; Description</b>				
R&R BRAKE ASSEMBLY- EACH (this includes r/r grease seal)	0.50 HOURS	YES	YES	Y see page 16
R&R ROTOR ON OIL BATH/ LUBE	0.80 HOURS	YES	YES	Y see page 16
R&R CALIPER BRACKET ON OIL BATH/ LUBE	0.30 HOURS	YES	YES	Y see page 16
TO REWIRE AN AXLE (SIMPLE WIRE JOB)	0.20 HOURS	NO	YES	Y see page 16
ADJUST BRAKES	NM	NO	NO	Y see page 16
R&R BRAKE ASSEMBLY 10K,12K (this includes r/r grease seal)	1.50 HOURS	NO	YES	Y see page 16
R&R BRAKE ROTORS 10K, 12K	1.50 HOURS	YES	YES	Y see page 16
<b>HUB EQUIPMENT - Operation &amp; Description</b>				
R&R HUB & DRUM OR IDLER HUB- COMPLETE- EACH	0.50 HOURS	YES	YES	Y see page 16
2 PIECE HUB/ DRUM ASSEMBLY 10K,12K R&R	1.00 HOUR	YES	YES	Y see page 16
R&R GREASE/ OIL SEAL- EACH (INCLUDES REPACKING BEARINGS)	0.50 HOURS	NO	YES	Y see page 16
R&R BEARINGS- INNER/ OUTER- PER WHEEL (Includes Cup and Cone)	0.50 HOURS	NO	YES	Y see page 16
R&R WHEEL STUDS- PER HUB (this includes r/r grease seal)	0.40 HOURS	YES	YES	Y see page 16
R&R WHEEL BULLET CAP (Dust Cap) (No rack time allowed)	0.20 HOURS	NO	YES	Y see page 16

LCI FLAT RATE FOR AXLE SERVICE continued				
Part Replaced	Time Allotment	Part Return	LCI Prior Contact	Picture Required
<b>SUSPENSION - Operation &amp; Description</b>				
R&R LEAF SPRING- EACH	0.30 HOURS	YES	YES	Y see page 16
R&R EQUALIZER- EACH	0.40 HOURS	YES	YES	Y see page 16
R&R ATTACHING PARTS KIT	0.80 HOURS	NO	YES	Y see page 16

Axle Groups	Definitions:	Definitions:
A-2000# to 7000#	PAR-Prior Approval Required	R&R-Remove & Replace
	NM-Normal Maintenance	N/A-Not Applicable

**NOTE: The axle serial number, model, and date of manufacture must be documented for repair claims to be eligible for reimbursement.**

LCI FLAT RATE FOR TV & CABINET LIFT				
Part Replaced	Time Allotment	Part Return	LCI Prior Contact	Picture Required
UPRIGHT CAPTURED 30" TV LIFT- COMPLETE	1.00 HOUR	NO	NO	YES
TV MOUNT BRACKETS HOOK-ON	0.30 HOURS	NO	NO	YES
TV LIFT SWITCH	0.30 HOURS	YES	NO	NO
TV LIFT MOTOR ONLY	*0.50 HOURS	YES	NO	NO
TV LIFT TRANSMITTER RECEIVER KIT	0.30 HOURS	YES	NO	NO see page 18
ONE-TOUCH SWITCH HARNESS	0.50 HOURS	YES	NO	NO
REPLACE TV LIFT MECHANISM	1.00 HOUR	NO	NO	YES

**\*IF TV LIFT IS BEHIND A FIREPLACE THEN 1.0 HOURS**

**IF THE RV IS OUTSIDE OF THE UNITED STATES AND THE INVOLVED ITEM IS LISTED AS A REQUIRED PART RETURN LCI DOES REQUIRE PHOTOS IN PLACE OF THE PART RETURN, THIS IS APPLICABLE ONLY TO UNITS OUTSIDE OF THE UNITED STATES.**

### LCI FLAT RATE FOR ENTRY DOORS

DOOR LOCK- ENTRY	0.30 HOURS	NO	NO	Y SEE PAGE 17
DOOR LOCK- SCREEN	0.20 HOURS	NO	NO	Y SEE PAGE 17
SLIDER- SCREEN DOOR	0.20 HOURS	NO	NO	Y SEE PAGE 17
PLASTIC FRAME SURROUNDING THE ENTRY DOOR WINDOW	0.30 HOURS	NO	NO	Y SEE PAGE 17
ENTRY DOOR WINDOW	0.50 HOURS	NO	NO	Y SEE PAGE 17
HINGE REPLACEMENT- 3 HINGES #See Below	1.00 HOUR	NO	YES	Y SEE PAGE 17
CONTROLLED MOTION HINGE- 3 HINGES # See Below	1.00 HOUR	NO	YES	Y SEE PAGE 17
ENTRY DOOR SHOCK / STRUT	0.30 HOURS	YES	NO	Y SEE PAGE 17
<b>ENTRY DOOR COMPLETE</b>				
REPLACE	1.00 HOUR	NO	YES*	Y SEE PAGE 17
<b>SCREEN DOOR COMPLETE</b>				
REPLACE	0.20 HOURS	NO	NO	Y SEE PAGE 17
<b>KICK PLATE- SCREEN</b>				
REPLACE	0.20 HOURS	NO	NO	Y SEE PAGE 17
<b>WEATHERSTRIP- ENTRY DOOR</b>				
REPAIR	0.30 HOURS	NO	NO	Y SEE PAGE 17
REPLACE	0.40 HOURS	NO	NO	Y SEE PAGE 17
<b>THRESHOLD COVER</b>				
REPLACE (LIP SHEET 0167)	0.50 HOURS	YES	NO	Y SEE PAGE 17

\*Prior contact must include photos

Entry door and Screen door adjustments not covered under warranty.

# If the issue only involves the hinges the complete door replacement will not be covered. The hinges can be replaced.

### LCI FLAT RATE FOR ELECTRONIC COMPONENTS

Part Replaced	Time Allotment	Part Return	LCI Prior Contact	Picture Required
<b>TOUCH AUDIO</b>				
TOUCH AUDIO PLAYER	0.50 HOURS	NO	NO	YES
TOUCH AUDIO EXTERNAL CONTROLLER	0.30 HOURS	NO	NO	YES
TOUCH AUDIO EXTERNAL CABLE	0.30 HOURS	NO	NO	YES
<b>DIGITAL LEVEL INDICATOR</b>				
LEVEL UP LITE LEVEL SENSOR	0.30 HOURS	NO	NO	YES see page 18
<b>CAT SENSOR</b>				
SENSOR	0.50 HOURS	NO	NO	YES
STRIKER	0.80 HOURS	NO	NO	YES
<b>KEYLESS ENTRY</b>				
REMOTE RECEIVER	0.50 HOURS	NO	NO	YES
DOOR LATCH ASSEMBLY	0.30 HOURS	NO	NO	YES
KEY PAD/KEY FOB & PROGRAMMING	0.30 HOURS	NO	NO	YES
KEYLESS ENTRY WIRE HARNESS	0.50 HOURS	NO	NO	YES
CONTACT REPLACEMENT	0.50 HOURS	NO	NO	YES
BAUER KEYLESS ENTRY DOOR HANDLE	0.30 HOURS	NO	NO	YES
<b>WIRELESS REMOTE</b>				
REMOTE RECEIVER R & R AND SYNC W/FOB	0.80 HOURS	YES	NO	NO see page 18
REMOTE CONTROL ONLY AND SYNCHRONIZE	0.30 HOURS	YES	NO	NO see page 18
POP UP CAMPER RECEIVER R&R & SYNC W/ FOB	0.50 HOURS	YES	NO	NO see page 18
LINC PAD- REMOTE	0.10 HOURS	YES	NO	NO see page 18
LINC PAD- REMOTE CHARGER	0.10 HOURS	YES	NO	NO see page 18
LINC TO CAN (SMART SWITCH): SWITCH MODULE/ INTERFACE	0.50 HOURS	YES	NO	NO see page 18
LINC TO CAN (SMART SWITCH): DATA CABLE	0.40 HOURS	NO	NO	YES
LINC TO CAN (SMART SWITCH): WIRELESS RECEIVER	0.50 HOURS	YES	NO	NO see page 18
MY RV TABLET	0.20 HOURS	YES	YES	NO see page 18
MY RV HUB	0.30 HOURS	YES	NO	NO see page 18
MY RV WALL MOUNT SWITCH	0.20 HOURS	YES	NO	NO see page 18
<b>TIRE LINC - TIRE PRESSURE MONITOR SYSTEM</b>				
TIRE LINC (TIRE PRESSURE MONITOR PANEL)	0.30 HOURS	YES	NO	NO
TIRE LINC (TIRE PRESSURE STEM/ VALVE SENSOR)	0.10 HOURS	YES	NO	NO



**LCI FLAT RATE FOR ELECTRONIC COMPONENTS (continued)**

Part Replaced	Time Allotment	Part Return	LCI Prior Contact	Picture Required
<b>SWAY CONTROL</b>				
SWAY CONTROL MODULE	0.30 HOURS	YES	YES	NO see page 18
SWAY CONTROL MAIN HARNESS	0.30 HOURS	YES	YES	NO

**LCI FLAT RATE FOR MANUAL BEDLIFT**

Part Replaced	Time Allotment	Part Return	LCI Prior Contact	Picture Required
BALL STUDS	0.30 HOURS	NO	NO	YES
BALL STUD ON WALL ARM	0.50 HOURS	NO	NO	YES
GAS STRUTS	0.30 HOURS	YES	NO	NO
PUCKS	0.30 HOURS	NO	NO	YES
COMPLETE BED	1.00 HOUR	NO	YES	YES

**POWERED BEDLIFT**

BEDLIFT MOTOR	0.50 HOURS	YES	NO	NO
BEDLIFT CONTROLLER	0.30 HOURS	YES	NO	NO see page 18

**POWER GEAR BUNK LIFT**

POWER GEAR BUNK LIFT- TOUCH PAD	0.80 HOURS	YES	NO	NO see page 18
POWER GEAR BUNK LIFT- CONTROL BOX	1.10 HOUR	YES	NO	NO see page 18
POWER GEAR BUNK LIFT- MOTOR/ ENCODER	1.00 HOUR	YES	NO	NO
POWER GEAR BUNK LIFT- END BRACKETS	0.50 HOURS	NO	NO	YES
POWER GEAR BUNK LIFT- GEAR RACK	1.00 HOUR	NO	NO	YES

**LCI FLAT RATE FOR RAMP DOORS**

COMPLETE PLAIN RAMP DOOR	1.00 HOUR	NO	YES	Y see page 16
PATIO RAMP DOOR CABLE	0.50 HOUR	NO	YES	Y see page 16
RAMP DOOR CASTER WHEEL	0.30 HOURS	YES	YES	Y see page 16
COMPLETE RAMP DOOR MINOR GRAPHICS	1.50 HOURS	NO	YES	Y see page 16
COMPLETE RAMP DOOR MAJOR GRAPHICS AND/OR PAINT	2.50 HOURS	NO	YES	Y see page 16
BRACKET - UPPER OR LOWER - EACH	0.30 HOURS	NO	YES	Y see page 16
SPRING - EACH	0.30 HOURS	NO	YES	Y see page 16
RAMP DOOR- INFINITE HINGE	2.00 HOURS	NO	YES	Y see page 16
RAMP DOOR RAIL KIT	0.50 HOURS	NO	YES	Y see page 16



**LCI FLAT RATE FOR AWNINGS**

R&R COMPLETE AWNING	1.50 HOURS	NO	NO	Y see page 16
R & R COMPLETE THULE AWNING	1.50 HOURS	NO	NO	Y see page 16
ROLLER TUBE ASSY, REPLACE	1.50 HOURS	NO	NO	Y see page 16
FABRIC- REPLACE *	1.50 HOURS	NO	YES	Y see page 16
SLIDE OUT BOOT AND / OR TOPPER	1.00 HOUR	YES	NO	Y see page 16
TORSION ASSEMBLY	0.70 HOURS	NO	YES	Y see page 16
INNER & OUTER ARM	0.50 HOURS	NO	NO	Y see page 16
PULL DOWN ROD	0.10 HOURS	NO	YES	Y see page 16
POWER AWNING INTERIOR SWITCH	0.30 HOURS	YES	NO	Y see page 16
POWER AWNING WIRING HARNESS	0.30 HOURS	NO	NO	Y see page 16
AWNING LED LIGHTS	0.50 HOURS	NO	NO	Y see page 16
AWNING POWER SUPPLY FOR LED LIGHTS	0.50 HOURS	YES	NO	Y see page 16
AWNING SPEAKERS	0.30 HOURS	NO	NO	Y see page 16
AWNING-GUIDE/BRACKET AWNING LED MOTOR BRUSH	0.50 HOURS	YES	NO	Y see page 16
GAS STRUTS	0.30 HOURS	YES	NO	Y see page 16
AWNING HEAD ASSEMBLY	0.50 HOURS	YES	NO	Y see page 16
POWER AWNING MOTOR REPLACEMENT	0.50 HOURS	YES	NO	Y see page 16
TRAVEL LOCK ( Jayco Products Only)	0.30 HOURS	NO	NO	Y see page 16

\*Fabric - wrinkles in fabric is not warrantable

PATIO DOORS				
Part Replaced	Time Allotment	Part Return	LCI Prior Contact	Picture Required
COMPLETE PATIO DOOR	1.00 HOUR	NO	YES	YES**p.17
PATIO WALL SYSTEM	0.80 HOURS	NO	YES	YES
PATIO WALL SYSTEM VELCRO STRIP (PER PANEL)	0.20 HOURS	NO	YES	YES
PATIO DOOR LOCK	0.20 HOURS	NO	YES	YES**p.17

LCI FLAT RATE FOR COMPONENTS				
TOY LOCK (NEED PICTURE OF THE TAG)	0.50 HOURS	NO	NO	YES
TABLE STAND	0.30 HOURS	NO	NO	YES
MANUAL KWIKEE STORAGE TRAY LATCH	0.50 HOURS	NO	NO	YES
MANUAL KWIKEE STORAGE TRAY BEARING	0.50 HOURS	NO	NO	YES
POWER KWIKEE STORAGE TRAY CONTROL	0.60 HOURS	YES	NO	NO
POWER KWIKEE STORAGE TRAY LIMIT SWITCH (EA)	0.50 HOURS	YES	NO	NO
POWER KWIKEE STORAGE TRAY MOTOR (EA)	0.60 HOURS	YES	NO	NO
ELECTRIC TRAVEL LOCKS (KWIKEE) LIMIT SWITCH	0.50 HOURS	YES	NO	NO
ELECTRIC TRAVEL LOCKS (KWIKEE) LH MOTOR FOR RH LATCH	0.70 HOURS	YES	NO	NO
ELECTRIC TRAVEL LOCKS (KWIKEE) RH MOTOR FOR LH LATCH	0.70 HOURS	YES	NO	NO

 <b>KINRO FLAT RATE - WINDOWS</b> 				
Part Replaced	Time Allotment	Part Return	KINRO Prior Contact	Picture Required
ROCK GUARD WINDOW COMPLETE	1.00 HOUR	NO	YES	YES**
ROCK GUARD GLAZING	0.30 HOURS	NO	YES	YES**
ROCK GUARD LOCK MANUAL	0.20 HOURS	NO	YES	YES**
ROCK GUARD ARM	0.30 HOURS	NO	YES	YES**
ROCK GUARD PROP	0.30 HOURS	NO	YES	YES**
ROCK GUARD HINGE	0.50 HOURS	NO	YES	YES**
ROCK GUARD FIBERGLASS	0.50 HOURS	NO	YES	YES**

IF THE RV IS OUTSIDE OF THE UNITED STATES AND THE INVOLVED ITEM IS LISTED AS A REQUIRED PART RETURN LCI DOES REQUIRE PHOTOS IN PLACE OF THE PART RETURN, THIS IS APPLICABLE **ONLY** TO UNITS OUTSIDE OF THE UNITED STATES.



### KINRO FLAT RATE - WINDOWS (continued)



Part Replaced	Time Allotment	Part Return	KINRO Prior Contact	Picture Required
WINDOW REPLACEMENT	1.00 HOUR	*SEE BELOW*	YES	YES**
COMPARTMENT DOOR REPLACEMENT	0.50 HOURS	NO	NO	YES**p.17
COMPARTMENT DOOR LOCK REPLACEMENT	0.20 ON 1ST LOCK, ALL OTHERS SAME UNIT 0.10 HR	NO	NO	YES**p.17
DOOR SEAL REPLACEMENT	0.30 HOURS	NO	NO	YES**p.17
WINDOW GLAZING CHANGE	0.30HR ON 1ST WINDOW, 0.20 ON ALL OTHERS	NO	NO	YES**
WINDOW KNOBS	0.10 HOURS	NO	NO	YES**
WINDOW TRACK REPLACEMENT	0.30 HOURS	NO	NO	YES**
WINDOW TRACK REPLACEMENT DUE TO BUNCHING ON 8730 WINDOW	1 HOUR	NO	NO	YES**
SV-VENT CHANGE	0.30 HOURS	NO	NO	YES**
EGRESS ARM REPLACEMENT	0.20 HOURS	NO	NO	YES**
EGRESS LATCH REPLACEMENT	0.20 HOURS	NO	NO	YES**
GEAR BOX REPLACEMENT	0.30 HOURS	NO	NO	YES**
GEAR BOX REPAIR	0.20 HOURS	NO	NO	YES**
WEEP HOLES MISSING ON WINDOWS (ALL Series Windows)	(WEEPS NOT INSTALLED BY PRODUCTION) 0.30 ON 1ST WINDOW, 0.10 HOURS FOR ALL OTHERS IN SAME UNIT	NO	NO	YES**

IF REPLACING ONE WINDOW NO PART RETURNED IS CORRECT. IF REPLACING TWO OR MORE WINDOWS ON THE SAME COACH YOU MUST OBTAIN AUTH IN ADVANCE FROM LCI / KINRO AND HOLD THE WINDOWS FOR POTENTIAL RETURN.

**\*\* PICTURES OF THE RPO TAGS/STICKERS ON LCI DOOR PRODUCT ARE REQUIRED FOR ALL ISSUES. PICTURES OF THE STICKERS/TAGS ON LCI WINDOW PRODUCT ARE REQUIRED WHEN A COMPLETE WINDOW IS REPLACED. IN ALL CASES PHOTOS OF THE SPECIFIC ISSUE ARE ALSO REQUIRED AS WELL AS THE IDENTIFICATION TAGS.\*\***



Window Tag: Located on the inner extrusion at the top of the window.

Note: Tag cannot be seen with removal of the window.

IF THE RV IS OUTSIDE OF THE UNITED STATES AND THE INVOLVED ITEM IS LISTED AS A REQUIRED PART RETURN LCI DOES REQUIRE PHOTOS IN PLACE OF THE PART RETURN, THIS IS APPLICABLE **ONLY** TO UNITS OUTSIDE OF THE UNITED STATES.



## LIPPERT INTERIOR SOLUTIONS FLAT RATE CHART



Part Replaced	Time Allotment	Part Return	INTERIOR SOLUTIONS Prior Contact	Picture Required
<b>HIDE-A-BED COMPONENTS</b>				
BACK	.50 HOURS	NO**	YES	YES
ARM	.50 HOURS	NO**	YES	YES
CUSHION COVER	.10 HOURS	NO**	YES	YES
SEAT FOAM	.20 HOURS	NO**	YES	YES
MECHANISM	.50 HOURS	NO	YES	YES
SEAT- AIR HAB OR TRI-FOLD	.50 HOURS	NO**	YES	YES
TRIFOLD MIDDLE SEAT COVER	.50 HOURS	NO**	YES	YES
LOOSE CUSHION	.10 HOURS	NO**	YES	YES
<b>FLIP SOFA COMPONENTS</b>				
BACK - COMPLETE	.50 HOURS	NO**	NO	YES
SEAT - COMPLETE	.50 HOURS	NO**	NO	YES
FLIP SOFA - COMPLETE	.30 HOURS	NO**	YES	YES
HINGE - 1 REPLACED	.30 HOURS	NO	NO	YES
BACK CUSHION	.10 HOURS	NO**	NO	YES
SEAT/BACK FOAM - REWORK	.30 HOURS	NO**	YES	YES
<b>RECLINER/ROCKER COMPONENTS</b>				
MECHANISM	.50 HOURS	NO	YES	YES
BACK	.50 HOURS	NO**	YES	YES
ARM	.30 HOURS	NO**	YES	YES
ARMS DOWN	.30 HOURS	NO**	YES	YES
COMPLETE RECLINER/ROCKER	.20 HOURS	NO**	YES	YES
BACK OF BACK	.30 HOURS	NO**	YES	YES
HANDLE/ CABLE	.30 HOURS	NO	YES	YES
<b>HAPPIJAC / SIT-N-SLEEP/ ROLL OVER COMPONENTS</b>				
HINGE - 1 REPLACED	.30 HOURS	NO	YES	YES
COVERS	.50 HOURS	NO**	YES	YES
FOAM	.50 HOURS	NO**	YES	YES
FRAME	.50 HOURS	NO	YES	YES
SEAT	.30 HOURS	NO**	YES	YES
BACK	.30 HOURS	NO**	YES	YES
<b>U DINETTE &amp; DINETTE COMPONENTS</b>				
DRAWER - ENTIRE	.10 HOURS	NO	NO	YES
DRAWER - FACE	.30 HOURS	NO	NO	YES
DRAWER GLIDES	.30 HOURS	NO	NO	YES
CUSHION	.10 HOURS	NO**	YES	YES
CUSHION COVER	.10 HOURS	NO**	YES	YES
<b>THEATRE SEATING/ENTERTAINMENT CENTER COMPONENTS</b>				
AUTH'D DEPENDING ON SITUATION	VARIES	NO	YES	YES
<b>MISC INTERIORS COMPONENTS</b>				
OTTOMANS	.20 HOURS	NO	NO	YES
BOLSTERS/ PILLOWS/ PONTOON ARMS	.10 HOURS	NO	NO	NO
PADDED PARTS	.10 HOURS	NO**	NO	NO
J CUBE COVER	.30 HOURS	NO**	NO	YES
LEG/ BAR/ BRACKET/ FOOT (ALL SOFAS)	.20 HOURS	NO	NO	YES
EURO CHAIR	.20 HOURS	NO	NO	YES
<b>MATTRESS</b>				
AIR MATTRESS	.50 HOURS	SEE BELOW	NO	YES
INNER SPRING & EVERGREEN	.20 HOURS	NO	NO	YES
BUNK MATTRESS	.10 HOURS	NO	NO	YES
MATTRESS COVER	.20 HOURS	NO**	NO	YES

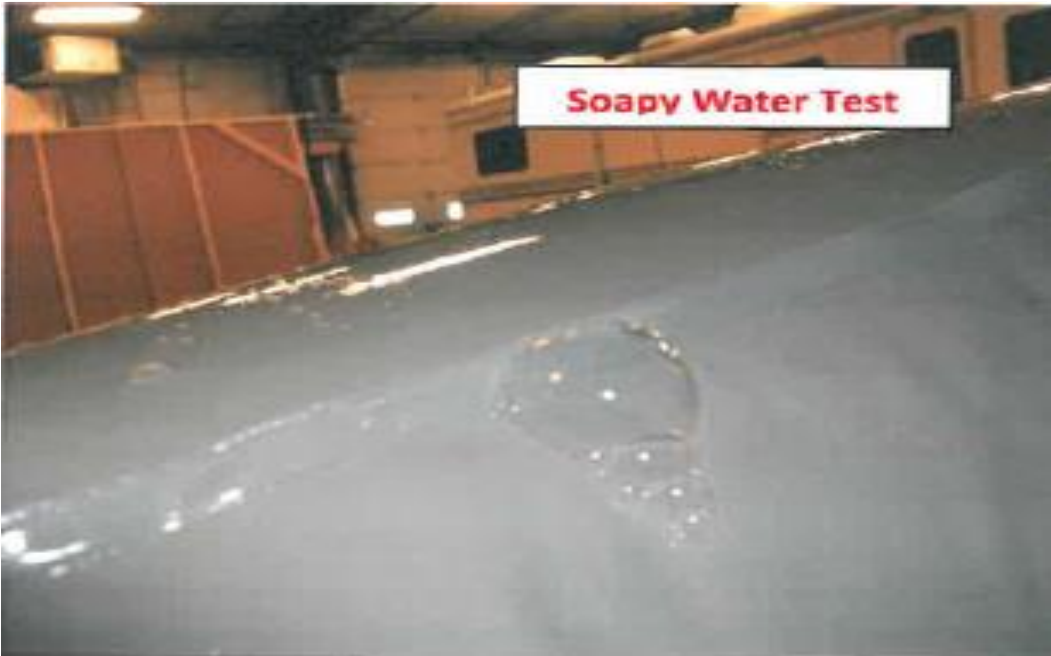
**INTERIOR ELECTRICAL**

Part Replaced	Time Allotment	Part Return	LCI Prior Contact	Picture Required
RECLINER/ROCKER BRAIN BOX	.20 HOURS	YES	YES	NO
THEATER SEATING BRAIN BOX	.20 HOURS	YES	YES	NO
RECLINER/ROCKER LED LIGHTSTRIP	.30 HOURS	NO	YES	YES
THEATER SEATING LED LIGHT STRIP	.30 HOURS	NO	YES	YES
RECLINER/ROCKER POWERED CUP HOLDER	.20 HOURS	YES	YES	NO
THEATER SEATING POWERED CUP HOLDER	.20 HOURS	YES	YES	NO
RECLINER/ROCKER MOTOR	.30 HOURS	YES	YES	NO
THEATER SEATING MOTOR	.30 HOURS	YES	YES	NO
RECLINER/ROCKER REMOTE	.20 HOURS	YES	YES	NO
THEATER SEATING REMOTE	.20 HOURS	YES	YES	NO
FLIP SOFA USB PORT	.20 HOURS	YES	YES	NO

\*\*NO RETURN REQUIRED UNLESS FABRIC ISSUE (ONLY 12" X 12" SECTION REQUIRED)

\*\*\*AIR MATTRESSES: SOAPY WATER TEST IS REQUIRED FOR ALL CLAIMS

\*\*\*REFUSAL OF SOAPY WATER TEST: IF ALL OTHER REQUIRED INFORMATION AND PICTURES ARE RECEIVED, LCI WILL PAY \$75.00 TOWARDS A LOCAL REPLACEMENT.



LIPPERT INTERIORS- MARINE DIVISION



Part Replaced	Time Allotment	Part Return	MARINE PRODUCTS PRIOR CONTACT	Picture Required
<b>UPHOLSTERY</b>				
CAPTAIN SEAT (BUCKET)	.30 HOURS	NO**	YES	YES
CAPTAIN SEAT PEDESTAL	.30 HOURS	NO	YES	YES
CAPTAIN SEAT SWIVAL	.30 HOURS	NO	YES	YES
CAPTAIN SEAT (DOUBLE WIDE)	.50 HOURS	NO**	YES	YES
SEAT BASE- BOX	.50 HOURS	NO**	YES	YES
SEAT BACKREST	.50 HOURS	NO**	YES	YES
SEAT CUSHION	.10 HOURS	NO**	YES	YES
SEAT COMPLETE (HERATAGE/ROYAL)	.30 HOURS	NO**	YES	YES
SUNLOUNGE CUSHION	.50 HOURS	NO**	YES	YES
ARM REST	.50 HOURS	NO**	YES	YES
SEAT HINGE	.10 HOURS	NO	YES	YES
RE-SKIN CUSHION SMALL	.80 HOURS	NO**	YES	YES
RE-SKIN CUSHION MEDIUM	1.00 HOUR	NO**	YES	YES
RE-SKIN CUSHION LARGE	1.30 HOURS	NO**	YES	YES
FURNITURE STORAGE DOORS	.30 HOURS	NO**	YES	YES
FURNITURE CUP INSERTS	.30 HOURS	NO	YES	YES
CHANGING ROOM CURTAIN	.30 HOURS	NO**	YES	YES
E- CENTER	2.00 HOURS	NO**	YES	YES
<b>MARINE CANVAS &amp; COVERS</b>				
STANDARD BIMINI CANVAS	.50 HOURS	NO	YES	YES
DOUBLE BIMINI CANVAS	1.5 HOURS	NO	YES	YES
BIMINI BOOT	.30 HOURS	NO	YES	YES
PLAYPEN COVERS 22' AND UNDER	1.5 HOURS	NO	YES	YES
PLAYPEN COVERS 22' AND OVER	2.00 HOURS	NO	YES	YES

**YOU MUST CONTACT IN ADVANCE LCI / SIGNATURE AND HOLD THE COMPONENTS FOR POTENTIAL RETURN.**

**IN MOST CASES, WARRANTY LABOR REIMBURSEMENT REQUIRES THE ORIGINAL PARTS TO BE RETURNED FOR TESTING AND ANALYSIS. CLAIMS SUBMITTED WITHOUT PARTS RETURNED WILL REQUIRE PICTURES OF ORIGINAL PARTS PRIOR TO PROCESSING CLAIM.**

1. Diagnostic time is not covered by the Lippert Components, Inc. Limited Warranty
2. Parts are not required returned from Canada unless specified by the technical staff. Pictures are normally acceptable.



**\*\*\* When returning Hydraulic Hoses please cut and return 24" section from both ends of the hose with fittings still attached. Package hoses after draining fluid in a plastic bag to contain any remaining fluid. If replacing more than 1 hose package hoses separately with location identification and VIN# on the outside of plastic bag.**

**EXAMPLE PICTURES OF REQUIRED COMPONENT TAGS/ LABELS**

**CLEAR PHOTOS OF FAILED COMPONENTS ALSO REQUIRED**



Axle Tag: Located on axle beam



Ramp Door: Tag located on roadside interior or ramp extrusion.



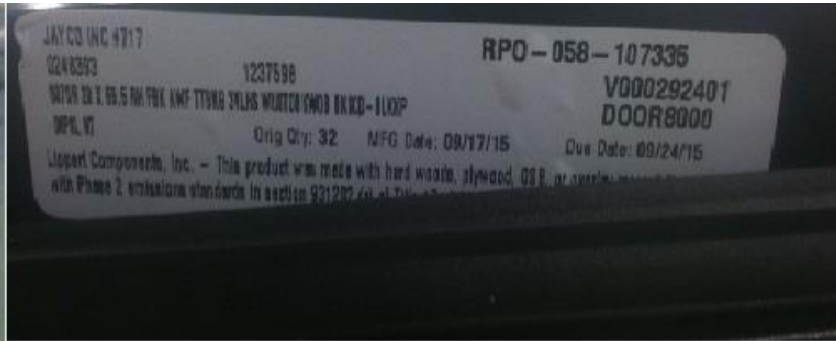
Chassis Tag: Large Sticker (top pic) is located on the curb side front of I-beam for both Travel Trailers and Fifth Wheels.

If larger sticker is not visible smaller sticker (bottom pic) is located on curb side of pinbox side plates for Fifth Wheels and on interior Road Side of drawbars for Travel Trailers.

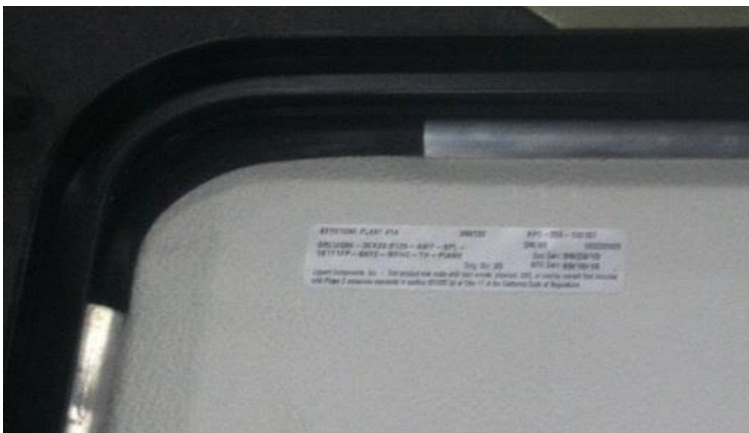


Awning Tag: When facing the coach, the tag is to the right side sewn into the seam up against the coach.

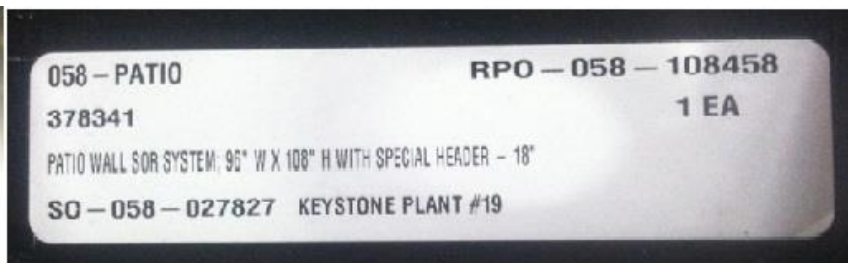
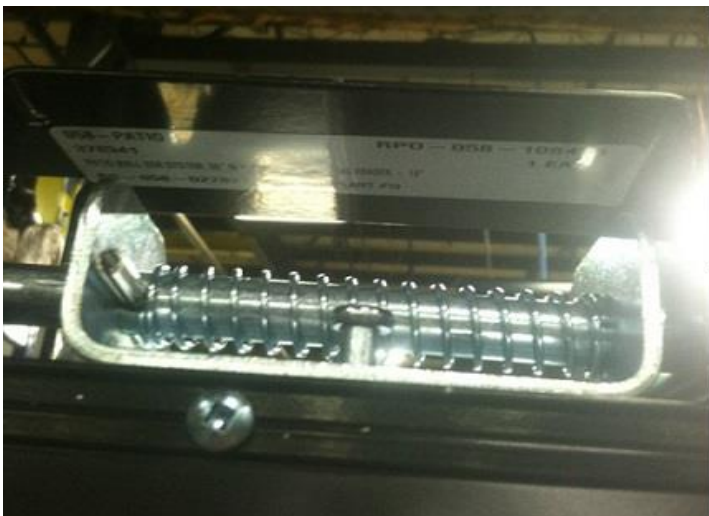




Entry Door Tag: Placed on the hinge side of the inner door frame and is only visible when the door is fully open. (Pictured Left)



Baggage Tag: Placed on the inside of the panel near the hinge side of the door. (pictured left)



Patio Door Tag: Located on the right hand door handle behind the latching mechanism bracket. (pictured left)

**16 DIGIT SERIAL NUMBER ON IDS COMPONENTS**



**PLEASE REMEMBER THIS IS A RETURNABLE PART FOR DEALERS WITHIN THE US, SO NO PICTURE NEEDED. IF A CANADIAN DEALER THE PICTURE WILL BE NECESSARY.**