

2007

# ASTORIA

DAMON MOTOR COACH



Pushing the diesel pusher concept to the limit.



Damon's 2007 Astoria offers everything you love about diesels —excellent power, performance and storage for sure, plus limitless luxury and special amenities. And, as always, Astoria offers all of this power, performance and luxury at a price that's exceptionally affordable. In fact, Astoria is competitive with most luxury gas models! That's real value.

And value is what Astoria is all about. Starting with Astoria's new, multi-tasking Dream Dinette. It's a spacious eating area by day; then, when you're ready to retire for the night, it converts to a comfortable bed with one easy lever-flipping action.

Read on to discover more about the incredible Astoria motorhome. Scrutinize the Astoria specifications too, to check out all of its wonderful benefits and features.

## Come discover the diesel that runs on value.

Astoria's cockpit is the best engineered in the business with more comfort and convenience for 2007. Everything you need is at your fingertips. The larger, tinted wraparound, one piece windshield provides a more dramatic, panoramic view of the road. Other amenities like heated, side-mounted power mirrors and reclining driver and passenger seats are designed with you in mind. And a new seven-inch backup monitor system with audio helps make backing up safer and easier.



*Enjoy the ride with an electronic cruise control, AM/FM/CD player with four speaker sound and map lights. Astoria also offers maximum visibility through the panoramic tinted one piece windshield with its own shades.*



Pushing the diesel pusher concept to the limit.



*Indulge yourself with the Astoria 3773 featuring Time Square (Pacific Edition) décor. Distinctive styling, refined comfort features put it in a class all its own.*



Move up to Astoria.



*Convenience surrounds Astoria's spacious kitchen. Pantry drawers provide extra storage, while cooking is made easy on the 3-burner range, in the oven or in the microwave.*

*3773 Pacific*





*Edition, Time Square, Honey Maple.*

Astoria includes distinctive styling and many deluxe “most wanted” features and amenities. And our exclusive Pacific Edition upgrade package also offers a Surroundsound® home theater system for the ultimate in entertaining recreation, plus features like a five-channel Dolby® Pro-Logic receiver-amplifier, DVD player and satellite speakers. The gorgeous Sherwin Williams® full-body exterior paint packages are real head-turners. Color choices include Cherry Sand, Navy Mist and Almond Espresso. Plus, color-matched awnings accentuate the beautiful full-body paint packages. Ultra-leather driver and passenger seats wrap you in comfort and luxury and feature six-way power controls. Electric visors in the cockpit make escaping from the sun fast and easy. Beautiful ceramic tile is featured in the entryway, kitchen and bath areas. And elegant yet rugged Corian® tile enhances the stylish kitchen.

*Indulge yourself in the beautiful, value-loaded bedroom. A rich wood-framed designer headboard and solid wood cabinet doors with a stylish old world feel.*

*Notice the careful attention to the smallest details in the comfortable bathroom: full height shower door, beautiful vinyl flooring and rich, hardwood cabinets and mirror.*





Damon's quality construction also comes with attractive décor packages as well. Astoria's beautiful paint scheme and fabric and wood options will make you feel right at home.

## Décor

Choose from three décor packages and two wood options that are sure to lend a sense of your personality to your Astoria.

## Floor Plans

The variety of floor plans available assure you the roomiest, most comfortable and convenient motorhome experience ever.

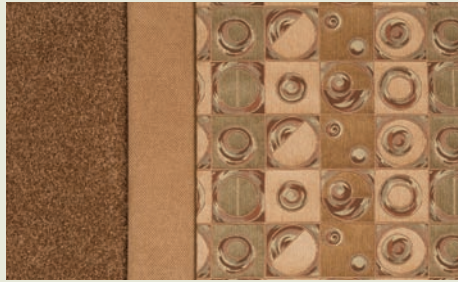
## Paint

Astoria's paint packages will turn heads with their distinctively upscale look that is unmatched by competitive motorhomes.

*Advanced technology is everywhere. The aerodynamic front cap, including the hood, headlights, clearance lights and enormous one piece windshield, give Astoria a clean, sleek look.*



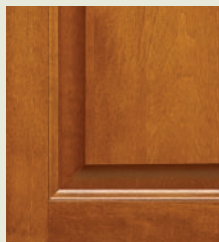
*Grand Central*



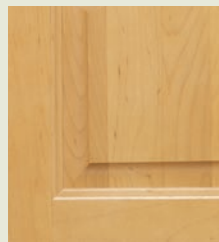
*Time Square*



*Liberty Lane*



*Cherry*

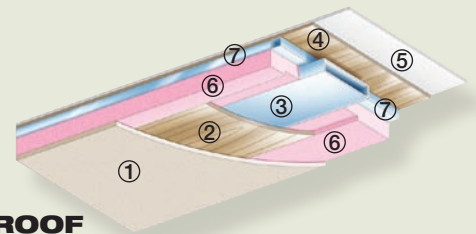


*Honey Maple*



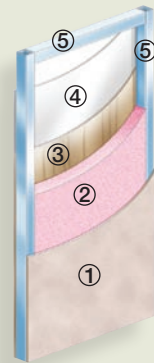
*The full extension metal drawer guides in the kitchen assure smooth operation. Now items in the back are just as convenient as those in the front.*

## Construction



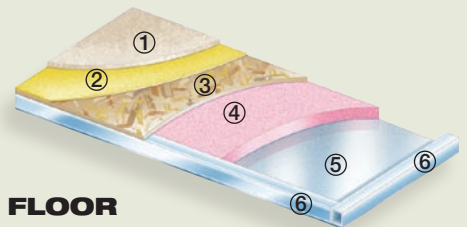
### ROOF

① Padded ceiling ② Luan (wood) ③ Air conditioning duct ④ Luan (wood) ⑤ TPO roofing ⑥ Insulation ⑦ Aluminum frame (tubing)



### SIDEWALLS

① Interior panel ② Insulation ③ Sidewall mende board (inside) ④ Sidewall mende board (outside) ⑤ Aluminum frame (tubing)



### FLOOR

① Carpet ② Padding ③ Structurewood floor ④ Insulation ⑤ Galvanized metal ⑥ Steel frame (tubing)



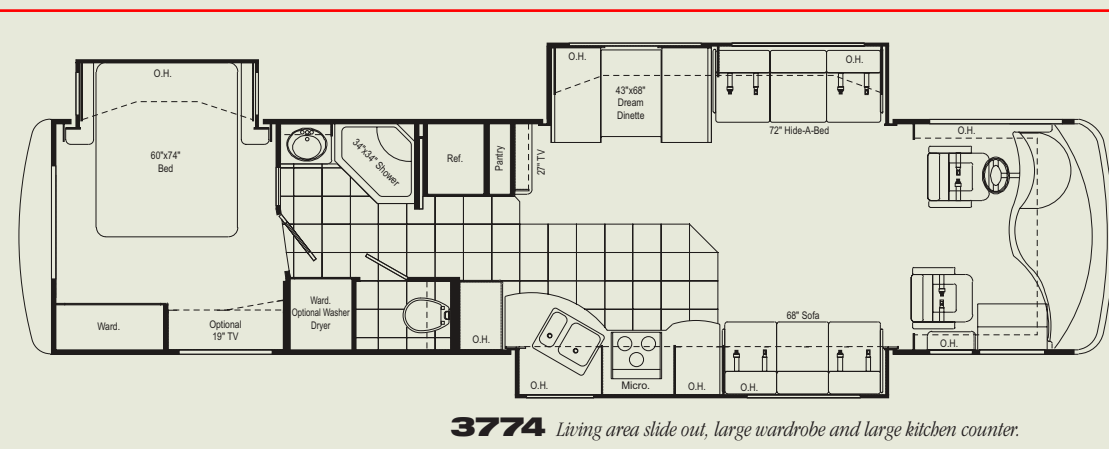
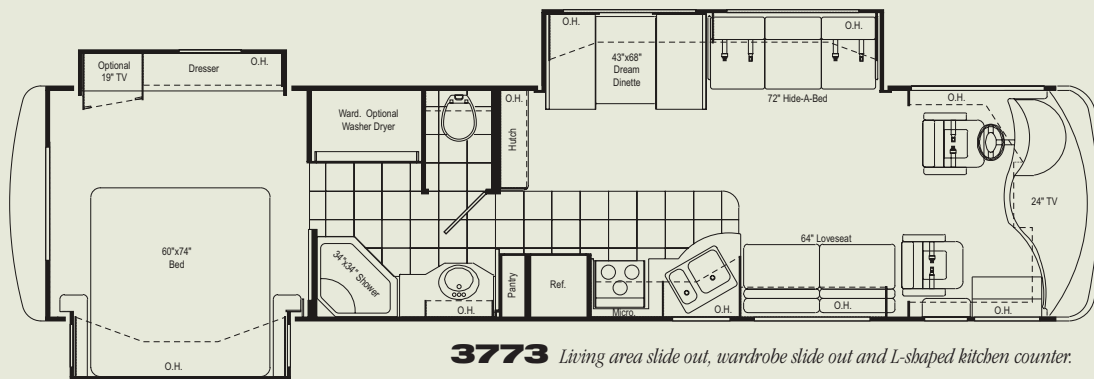
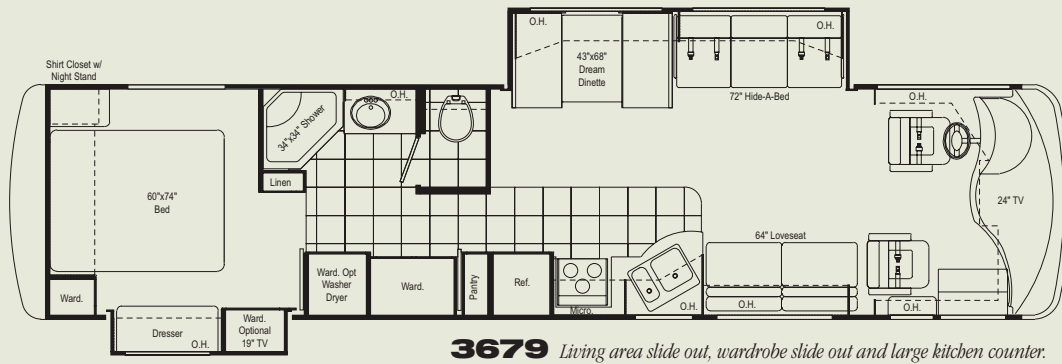
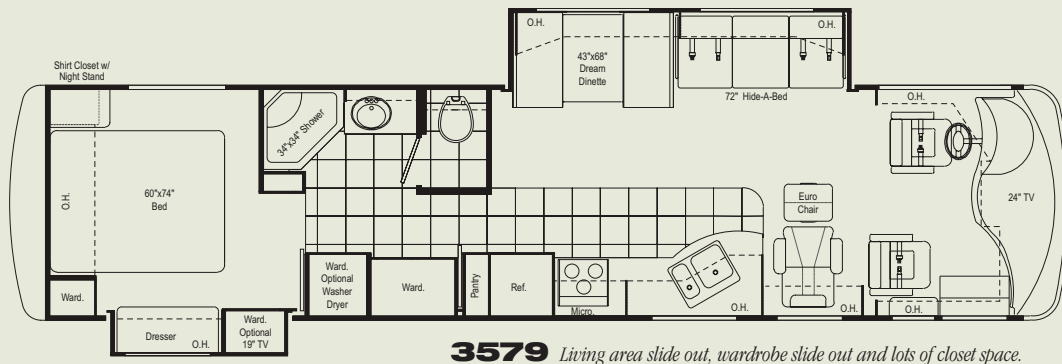
*The raised rail chassis provides loads of extra basement storage space. Now you can bring everything you need on your journey – and then some.*



*Iron Grey Metallic  
(Standard)*



*Cherry Sand*



## Astoria standard specifications and features

### Living Area

- Euro recliner with leather seating surface and ottoman (passenger side) (3579 only)
- Décor fabric loveseat (3679 & 3773 only)
- Décor fabric sofa bed (passenger side) (3774 only)
- Décor fabric hide-a-bed (driver side slideout)
- Night shades
- 100% nylon carpeting with stain treatment and padding
- 24" flat screen color TV in cockpit overhead with full-function remote, antenna booster and jack (N/A on 3774)
- 27" LCD TV with full-function remote with antenna, booster and jack (3774 only)
- Soft touch padded vinyl ceiling
- Fluorescent lighting
- Living room pin-up lights
- Aisle lights

### Chassis

- Raised-rail chassis
- 300-hp Cummins® ISB (low torque)
- In-block engine heater
- Leece Neville® 160-amp, 12-volt alternator
- Allison® MH-2500 automatic transmission – 5-speed
- Exhaust brake
- Full air brakes with automatic slack adjusters (front and rear)
- Anti-lock brakes
- Midland® Pure-Air Plus™ heated air dryer
- Air-ride suspension
- Sachs® shock absorbers (front and rear)
- 22.5" radial tires
- Leveling jacks
- Stainless-steel wheel liners
- Front and rear mud flaps
- Trailer hitch (5,000 lbs.)
- Emergency start circuit
- Under-hood light
- Layer of neoprene vibration dampener
- Dual fuel fills

### Bathroom

- Full-height shower with door
- Skylight in shower
- Power vent
- Foot-flush porcelain toilet with sprayer
- Wallpaper border
- Vinyl tile flooring

### Cockpit

- Molded ABS dash
- Electronically controlled dash air conditioning
- Premium AM/FM/CD player (single disc, in-dash)
- 4-speaker sound
- Electronic cruise control
- Padded steering wheel
- Douglas® tilt/telescoping steering column
- Map lights
- Dash fans
- Air horns
- Tinted windshield
- Windshield privacy shade
- Front-mounted power mirrors with heat
- Nature's Choice leather w/décor cloth insert reclining driver/passenger seats
- 3-point, wall-mounted seat belts
- Side storage cabinets above driver and passenger
- Sun visors



Navy Mist



Almond Espresso

Backup monitor system with audio  
Drink holders  
Vinyl tile entryway

### Exterior

Paint and graphics package  
Fog lights  
Wide-body design  
Radius-cornered domed TPO roof  
Rear ladder  
Front and rear fiberglass caps  
Side-mounted manual patio awning  
Side-mounted awning over slideout  
Upgraded gelcoated sidewall  
Locking exterior storage doors  
Three side-hinged compartment doors (passenger side)  
Custom-designed front entry door with screen  
Black-framed radius-cornered windows  
Two patio lights (one on each side)  
Lighted storage compartments  
Full basement pass-through storage  
Gas pistons on exterior storage doors

### Bedroom

Innerspring mattress  
Bedspread with throw pillows  
Wood-framed designer headboard  
Lambrequin window treatments  
Night shades  
Pin-up lights

### Kitchen

Refrigerator: large flush-mounted, double-door  
Refrigerator: raised-panel hardwood front (honey maple or cherry)  
3-burner range and oven  
Folding range cover  
Mirrored backsplash behind stove  
1.4 cubic-foot space saver microwave oven  
Sink covers  
Single-lever faucet with sprayer  
Kitchen faucet water filter  
Pantry  
HP laminate countertop with wood edge  
Solid-wood, raised-panel cabinet doors throughout (maple or cherry)  
Vinyl tile flooring  
Dream Dinette with wood-edged table  
Mini blinds  
Wallpaper border

### Pacific Edition Upgrade Package

Full body paint package  
Color-matched awnings (electric-powered main awning)  
Ultra-leather cockpit seats with 6-way power  
Home theater system with Surroundsound®  
10 gallon water heater  
Electric sun visors  
Ceramic tile in kitchen and bath  
Ceramic tile entryway  
Corian® countertops in kitchen  
Rear air  
Space-saver convection microwave  
Air horns  
Day/night shades in living area  
Inverter: 1000 watt  
Fantastic® power vent  
Full-width stainless steel stone guard  
Awning over slideout  
Washer/dryer prep  
TV in bedroom  
Dual-pane windows

### Utilities

Air conditioner: 13,500-BTU ducted center (front)  
Furnace: 35,000-BTU electronic ignition, floor-ducted

Water heater: 10-gallon gas/electric with electronic ignition  
Water heater bypass kit  
Generator: 7.5 kW Generac® Quietpac™  
Converter: 80-amp  
Dual 6-volt auxiliary batteries  
Battery disconnect  
50-amp, 120-volt service with marine-type detachable power cord  
Exterior GFCI receptacle  
Enclosed heated potable and holding tanks  
Black-water tank flush  
Three-way valve for tank/city water fill  
Telephone hookup  
Cable TV/satellite hookup  
Pre-wired for roof-mounted satellite dish  
Exterior shower  
Carbon monoxide, LP gas and smoke detectors  
Monitor panel with LPG readout  
Steel lockbox (located in a wardrobe)

### Popular Options

Side-mounted manual front door awning  
Black-framed, dual-pane windows  
~~Invisible bra~~  
Full-width stainless-steel stone guard with Damon stencil  
~~Front mounted chrome power mirrors with heat~~

Driver's seat with 6-way power  
Passenger's seat with 6-way power  
~~Nature's Choice leather hide-a-bed (driver side slideout)~~  
Day/night shades  
Video package (VCR/DVD and control center)  
~~Refrigerator: four door with icemaker~~  
~~Cooktop IPO range and oven (convection microwave required)~~  
1.1 cubic-foot space saver microwave/convection oven  
~~Buffet with additional storage and four chairs (two fixed and two folding)~~  
~~2 folding chairs (buffet only)~~  
Fantastic® power vent  
19" color TV in bedroom  
AM/FM/CD player in bedroom  
Air conditioner: 13,500-BTU ducted center (rear)  
~~Dual heat pumps with low-profile A/C (n/a with optional A/C)~~  
Generator: 7.5 kW Onan® Quiet Diesel™  
Washer/dryer prep  
~~DSS automatic tracking satellite dish~~

Astoria Weights and Measures	3579		3679		3773		3774	
		PE		PE		PE		PE
Wheelbase	228	228	228	228	242	242	242	242
Overall length	37'7"	37'7"	37'7"	37'7"	38'9"	38'9"	38'9"	38'9"
Overall width	101"	101"	101"	101"	101"	101"	101"	101"
Overall height with AC	12'7"	12'7"	12'7"	12'7"	12'7"	12'7"	12'7"	12'7"
Std. weight (approx. lbs.)	21,732	22,728	21,933	22,989	23,015	23,704	23,075	24,114
GVWR	26,850	28,000	26,850	28,000	28,000	28,000	28,000	28,000
GCWR	31,850	33,000	31,850	33,000	33,000	33,000	33,000	33,000
Fresh water (approx. gal.)	95.5	95.5	95.5	95.5	95.5	95.5	95.5	95.5
Grey/black water (approx. gal.)	51/51	51/51	51/51	51/51	51/51	51/51	51/51	51/51
LP (lbs.)	126	126	126	126	126	126	126	126
Sleeping capacity	4	4	4	4	4	4	4	4
Exterior storage capacity (cu. ft.)	150	150	150	150	185	185	185	185
Interior drawers	20	22	20	22	19	21	17	19
Interior drawer capacity (cu. ft.)	18.8	21.1	16.4	16.7	12.1	12.4	13.4	13.7
Fuel capacity (approx. gal.)	100	100	100	100	100	100	100	100

PE = Pacific Edition

All Astoria motorhomes built on Freightliner chassis.



P.O. Box 2888 • Elkhart, IN 46515  
Customer Service: 800-860-3812  
Sales Department: 800-860-5658  
[www.DamonRV.com](http://www.DamonRV.com)



DC 9/06 © 2006 Damon Motor Coach Printed in U.S.A.

Due to constant product improvements, the specifications, component parts and standard/optional equipment are subject to change without notice or obligation. Product photography or diagrams may show equipment that is optional. Damon Motor Coach reserves the right to make changes in prices and models and to discontinue models without notice or obligation. Components, parts or chassis may have been manufactured at times other than the model year indicated. All capacities are approximate and dimensions are nominal. All dry weights are based on standard model features and do not include optional features or equipment. Various RV components and features may differ to conform to local codes. Due to EPA environmental restrictions, engine power and torque ratings may change mid-year.