

Onan

Genset Parts Catalog

**HDKAJ
HDKAK
HDKAT**



Printed in U.S.A.

981-0200C
7-01 (HDKAJ/K Spec A-F)
(HDKAT Spec A-B)

Replaces 981-0200B, 1-99 (Spec A-F)

MODEL IDENTIFICATION

To avoid errors or delay in filling your parts order, always give the MODEL, SPEC NO. and SERIAL NO. from the Onan nameplate.

For handy reference, insert your nameplate information in the spaces below.

MODEL AND SPEC NO.

SERIAL NO.

DIGITAL CONTROL SOFTWARE VERSION
AND DATE (IF APPLICABLE)

SAFETY PRECAUTIONS

The following symbols are used in Onan manuals to alert users to the potentially dangerous conditions relating to maintenance of equipment and replacement of parts. Please read and observe.



This symbol warns of immediate hazards which will result in severe personal injury or death.



This symbol refers to a hazard or unsafe practice which can result in severe personal injury or death.



This symbol refers to a hazard or unsafe practice which can result in severe personal injury or product or property damage.

PRODUCT SAFETY PRECAUTIONS



Service and repair of Onan equipment must be performed by trained, experienced personnel only. Improper service or repair may result in property damage, severe personal injury or death. Do not use this catalog as a guide to servicing your equipment. Read and follow the IMPORTANT SAFETY INSTRUCTIONS in the Service Manual appropriate for the equipment you are working on.



Contact with USED ENGINE OILS has been identified by a United States federal agency and some USA state agencies as causing CANCER or REPRODUCTIVE TOXICITY. When checking or changing engine oils take all necessary precautions not to ingest, breathe the fumes or contact the used oil.



Contact with ASBESTOS has been identified by a United States federal agency and some USA state agencies as causing CANCER or REPRODUCTIVE TOXICITY. When handling engine gaskets take all necessary precautions not to ingest, breathe or contact the dust from the gaskets! Use adequate ventilation and wear protective gloves, masks and clothing!



Contact with BENZINE and LEAD, found in gasoline, fuel additives and solvents has been identified by a United States federal agency and some USA state agencies as causing CANCER or REPRODUCTIVE TOXICITY. When checking, draining or adding gasoline and fuel additives or using solvents take all necessary precautions not to ingest, breathe the fumes or contact the liquids. Use adequate ventilation and wear protective gloves, masks and protective clothing!

Introduction

This parts catalog applies to the standard generator sets listed below. Parts are arranged in groups of related items and each illustrated part is defined by a reference number corresponding to the same reference number in the parts list. Parts illustrations are typical. Using the model and specification number from your generator set nameplate, select parts that apply to your set. Unless otherwise mentioned in the description or page heading, parts are interchangeable between models. Throughout this catalog right and left sides are determined by facing the engine end (front) of the set.

Generator Set Data Table					
Model Identification	Rating	Wiring Diagram AC/DC	Voltage	Hertz	Phase
7.5HDKAJ/*	7,500 Watts	611-1236	120	60	1
7.5HDKAT/*	7,500 Watts	611-1236	120	60	1
8.0HDKAK/*	8,000 Watts	611-1236	120	60	1

* – The specification number denotes customer requested options or deviations from a standard (1A, 1B, etc.) model. The specification letter advances (A, to B, to C, etc.) with major manufacturing changes.

Index

Arm, Rocker, **17**
Armature, Starter, **37**

Baffle, Inlet, **23**
Ball, Crankshaft, **6**
Ball, Injection Pump Gear, **12**
Ball, Valve Seat, **20**
Barb, Coolant Tank Hose, **25**
Base, Governor, **11**
Base, Mounting, **33**
Bearing, Carrier Ball, **11**
Bearing, Crankshaft Thrust, **6**
Bearing, Fuel Camshaft, **12**
Bearing, Starter, **37**
Bearing, Water Pump Ball, **21**
Belt, Fan, **28**
Block, AC Terminal, **40**
Block, Battery Harness Terminal, **41**
Block, Cylinder, **5**
Block, Exhaust Fiberglass, **31**
Boot, Circuit Breaker, **35**
Bracket, Air Cleaner, **47**
Bracket, Fuel Filter, **22**
Bracket, Inverter, **38**
Bracket, Rocker Arm, **17**
Bracket, Voltage Regulator, **33**
Breaker, Circuit, **40**
Bushing, Connecting Rod, **6**
Bushing, Crankshaft, **6**
Bushing, Idle Gear, **7**

Camshaft, **7**
Camshaft, Fuel, **12**
Cap, Coolant Drain, **25**
Cap, Coolant Fill, **25**
Cap, Coolant Recovery Tank, **25**
Cap, Cylinder Block Sealing, **5**
Cap, Cylinder Head Sealing, **14**
Cap, Oil Fill, **19**
Cap, Speed Control, **10**
Cap, Valve, **17**
Carrier, **11**
Case, Governor Ball, **12**
Clamp, CB Boot, **35**
Clamp, Hose Bracket, **25**
Clamp, Isolator, **31**
Clamp, Loop, **23, 26, 27, 38**
Clip, Loop, **38**
Clutch, Starter, **37**
Cock, Oil Drain, **5**
Collar, Crankshaft, **6**
Collet, Valve Spring, **17**
Components, Injection Nozzle, **16**
Components, Injection Pump, **13**
Components, Starter, **37**
Components, Water Pump, **21**
Control, Speed, **10**
Cord, Glow Plug, **15**

Core, AC Harness Ferrite, **40**
Core, Battery Harness Ferrite, **41**
Core, Engine Harness Ferrite, **39**
Cover, AC Access, **35**
Cover, Air Cleaner, **23, 47**
Cover, Air Cleaner Element, **23**
Cover, Bearing Plate, **8**
Cover, Breather Element, **19**
Cover, Fuel Camshaft, **5**
Cover, Gearcase Hole, **20**
Cover, Governor, **11**
Cover, Hole, **12**
Cover, Lifting Eye Access, **35**
Cover, Main Bearing, **8**
Cover, Radiator Fill Access, **35**
Cover, Valve, **19**
Cover, Water Temperature Thermostat, **18**
Crankshaft, **6**

Door, Housing Service, **35**
Door, Maintenance, **33**

Edging, Housing Trim, **35**
Elbow, Breather, **19**
Elbow, Bulkhead, **22**
Elbow, Exhaust, **31**
Element, Air Cleaner, **23, 47**
Element, Breather, **19**
Engine, Replacement, **5**
Eye, Lifting, **14**

Fan, Generator, **36**
Filter, Fuel, **22**
Filter, Oil, **20**
Fitting, Bulkhead, **22**
Fitting, Coolant "T" Hose, **25**
Flange, Injection Pump Plunger Sleeve, **13**
Flange, Water Pump, **18, 21**
Frame, Starter, **37**
Fuse, **39**

Gasket, Bearing Plate Cover, **8**
Gasket, Cylinder Head, **14**
Gasket, Delivery Valve, **13**
Gasket, Exhaust Manifold, **31**
Gasket, Gearcase, **20**
Gasket, Gearcase Hole Cover, **20**
Gasket, Governor Base, **11**
Gasket, Hole Cover, **12**
Gasket, Injection Pump, **13**
Gasket, Injector Nozzle, **15**
Gasket, Inlet Manifold, **29**
Gasket, Muffler, **31**
Gasket, Oil Filter Flange, **20**
Gasket, Oil Pan, **27**
Gasket, Oil Pump, **5**
Gasket, Speed Control, **10**
Gasket, Valve Cover, **19**

Index

Gasket, Water Flange, **18**
Gasket, Water Pump, **21**
Gasket, Water Temperature Thermostat, **18**
Gauge, Oil Pressure (Remote Panel), **46**
Gauge, Water Temperature (Remote Panel), **46**
Gear, Camshaft, **7**
Gear, Crankshaft, **6**
Gear, Idle, **7**
Gear, Injection Pump, **12**
Gear, Oil Pump Drive, **5**
Gearcase, **20**
Generator, **36**
Governor, **11**
Grommet, Engine Harness, **39**
Grommet, Remote Air Cleaner Kit, **47**
Guard, Circuit Breaker, **35**
Guard, Fan, **33**
Guide, Valve, **14**

Harness, AC, **40**
Harness, Battery, **41**
Harness, Engine, **39**
Harness, Extension, **42**
Harness, Fuel Pump, **47**
Harness, Pigtail, **42**
Harness, Remote Panel (Gauges), **46**
Harness, Remote Panel (On/Off Switch), **43**
Harness, Remote Panel (Switch/Hourmeter), **44**
Harness, Remote Panel (Switch/Voltmeter), **45**
Head, Cylinder, **14**
Hinge, Maintenance Door, **33**
Holder Assy, Nozzle, **16**
Holder, Delivery Valve, **13**
Holder, Fuse, **39**
Holder, Main Bearing, **8**
Holder, Nozzle, **15**
Hose, Air Bleed, **25**
Hose, Air Cleaner, **47**
Hose, Breather, **19**
Hose, Coolant Fill Neck, **25**
Hose, Intake, **23**
Hose, Oil Fill, **27**
Hose, Overflow, **25**
Hose, Radiator, **25**
Hourmeter, **35**
Housing, Air Cleaner, **23**
Housing, Flywheel, **36**
Housing, Genset, **35**
Housing, Starter, **37**

Idle Assy, **10**
Impeller, Water Pump, **21**
Indicator, Oil Level, **27**
Insulation, Exhaust Baffle, **26**
Insulation, Housing, **35**
Insulation, Inlet Baffle, **23**
Insulator, Terminal, **39**
Intake, Air, **23**

Inverter, **38**
Isolator, Muffler, **31**
Isolator, Vibration, **33**

Joint, Injection Pump Eye, **13**

Key, Camshaft Feather, **7**
Key, Crankshaft Feather, **6**
Key, Cylinder Block Feather, **5**
Key, Fuel Camshaft Feather, **12**
Kit, Aux Commercial Fuel Pump, **47**
Kit, Commercial Remote Air Cleaner, **47**
Kit, Remote Panel (Gauges), **46**
Kit, Remote Panel (On/Off Switch), **43**
Kit, Remote Panel (Switch/Hourmeter), **44**
Kit, Remote Panel (Switch/Voltmeter), **45**
Kit, Starter Brush, **37**

Labels, **47**
Latch, Service Door, **35**
Latch, Service Panel, **33**
Lever, Fork, **9**
Line, Fuel, **22**

Manifold, Exhaust, **31**
Manifold, Inlet, **29**
Meter, Hour (Remote Panel), **44, 46**
Meter, Voltage (Remote Panel), **45, 46**
Mount, Inverter, **38**
Mount, Radiator, **26**
Mount, Starter, **36**
Muffler, Exhaust, **31**

Neck, Coolant Fill, **25**
Nipple, Gearcase Hex Pipe, **20**
Nozzle, Injection, **15, 16**

O'Ring, Coolant Tank Cap, **25**
O'Ring, Cylinder Block, **5**
O'Ring, Cylinder Head, **14**
O'Ring, Gearcase, **20**
O'Ring, Governor Rotor, **11**
O'Ring, Injection Pump, **13**
O'Ring, Oil Level Indicator, **27**
O'Ring, Oil Pickup Tube, **27**
O'Ring, Oil Slinger, **6**
O'Ring, Valve Cover Cap Nut, **19**
Outlet, Water, **18**

Pan, Oil, **27**
Panel, Housing, **35**
Panel, Remote Gauge, **46**
Panel, Remote Switch, **43**
Panel, Remote Switch/Hourmeter, **44**
Panel, Remote Switch/Voltmeter, **45**
PCB Assy, Filter DC, **41**
Pin, Cylinder Block Hollow, **5**
Pin, Cylinder Block Straight, **5**
Pin, Gearcase Spring, **20**

Index

Pin, Governor Spring, **9**
Pin, Injection Pump, **13**
Pin, Injection Pump Joint, **13**
Pin, Piston, **6**
Pipe, Exhaust Flex, **31**
Pipe, Injection, **15**
Pipe, Overflow, **15**
Pipe, Water Pump Return, **21**
Pipe, Water Return, **18**
Piston, **6**
Plate, Breather Element, **19**
Plate, Camshaft Retaining, **7**
Plate, Fuel Camshaft Retaining, **12**
Plate, Injection Pump, **13**
Plug, Cylinder Block, **5**
Plug, Cylinder Head Pipe, **14**
Plug, Gearcase Pipe, **20**
Plug, Glow, **15**
Plunger, Injection Pump, **13**
Pulley, Drive, **28**
Pulley, Fan, **28**
Pump, Fuel, **22, 47**
Pump, Injection, **12, 13**
Pump, Oil, **5**
Pump, Water, **21**

Rack, Injection Pump Control, **13**
Radiator, **26**
Regulator, **33**
Resonator, Intake, **23**
Retainer, Valve Spring, **17**
Ring, Idle Gear Retaining, **7**
Ring, Piston Pin Retaining, **6**
Rod, Camshaft Push, **7**
Rod, Connecting, **6**
Rod, Injection Nozzle Push, **16**
Rotor, Generator, **36**
Rotor, Governor, **11**

Seal, Air Cleaner Spacer, **23**
Seal, Bearing Plate Cover Oil, **8**
Seal, Coolant Hose, **25**
Seal, Exhaust Pipe, **31**
Seal, Fuel Pump, **22**
Seal, Gearcase Oil, **20**
Seal, Housing, **23**
Seal, Injection Nozzle Heat, **15**
Seal, Maintenance Door, **33**
Seal, Oil Drain, **27**
Seal, Oil Fill Cap, **19**
Seal, Radiator Spacer, **26**
Seal, Valve Stem, **17**
Seal, Water Pump, **21**
Seat, Injection Pump Spring, **13**

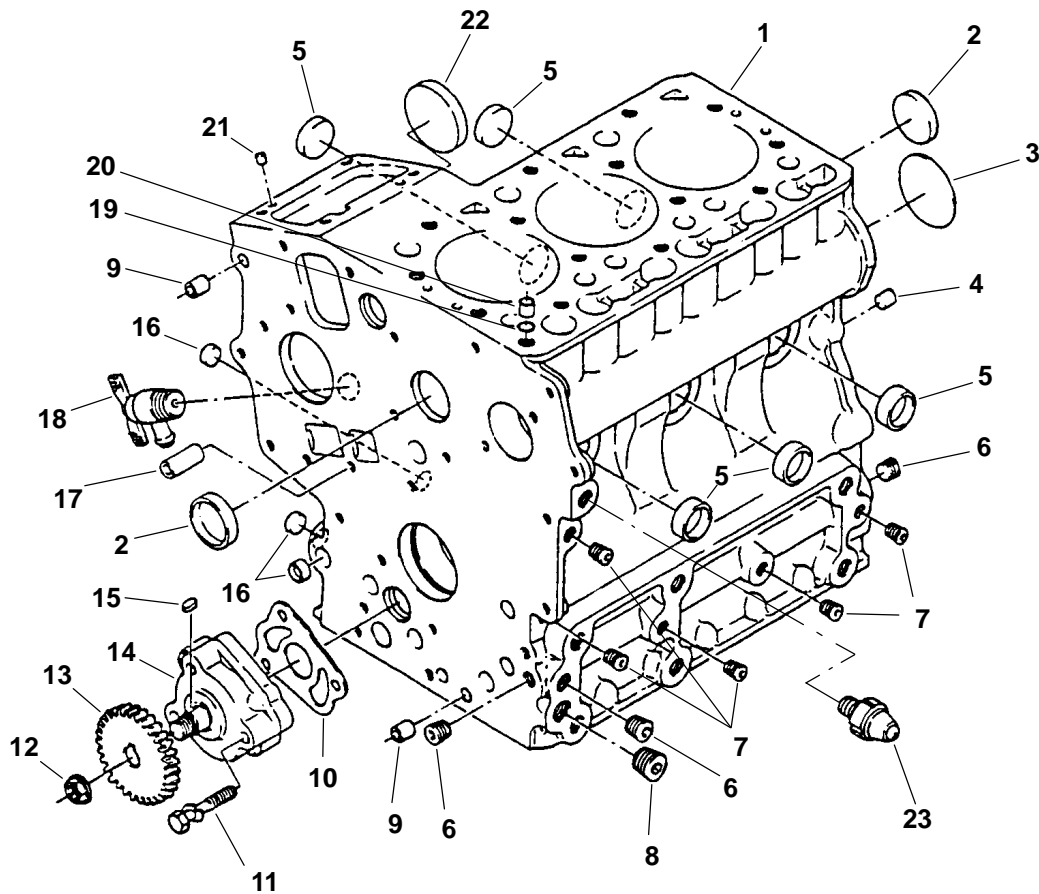
Seat, Valve, **20**
Sender, Water Temperature, **18**
Set, Crankshaft Bearing, **6**
Set, Piston Ring, **6**
Shaft, Governor, **9**
Shaft, Idle Gear, **7**
Shaft, Rocker Arm, **17**
Shield, Breather Oil, **19**
Shim, Injection Pump, **12, 13**
Sleeve, Air Intake, **23**
Sleeve, Crankshaft, **6**
Sleeve, Governor, **12**
Sleeve, Injection Pump Control, **13**
Slinger, Oil, **6**
Spacer, Idle Gear, **7**
Spacer, Injection Nozzle, **16**
Spring, Delivery Valve, **13**
Spring, Fork Lever Governor, **9**
Spring, Governor, **11**
Spring, Injection Nozzle, **16**
Spring, Injection Pump Plunger, **13**
Spring, Rocker Arm, **17**
Spring, Valve, **17**
Spring, Valve Seat, **20**
Starter Components, **37**
Starter Mounting, **36**
Stator, Generator, **36**
Stator, Governor, **11**
Strap, Bond, **33**
Switch, Oil Pressure, **5**
Switch, Rocker, **35**
Switch, Start/Stop (Remote Panel), **43, 44, 45, 46**
Switch, Starter, **37**
System, Cooling, **25**
System, Exhaust, **31**
System, Fuel, **22**

Tank, Coolant Recovery, **25**
Tappet, **7, 13**
Thermostat, Water Temperature, **18**
Transformer, **40**
Transformer, Battery Charge, **33**
Trough, Oil Drain, **22**
Tube, Adapter, **47**
Tube, Exhaust, **31**
Tube, Oil Pickup, **27**

Valve, Delivery, **13**
Valve, Exhaust, **17**
Valve, Intake, **17**

Wall, Back, **26**
Wire, Retainer, **13**

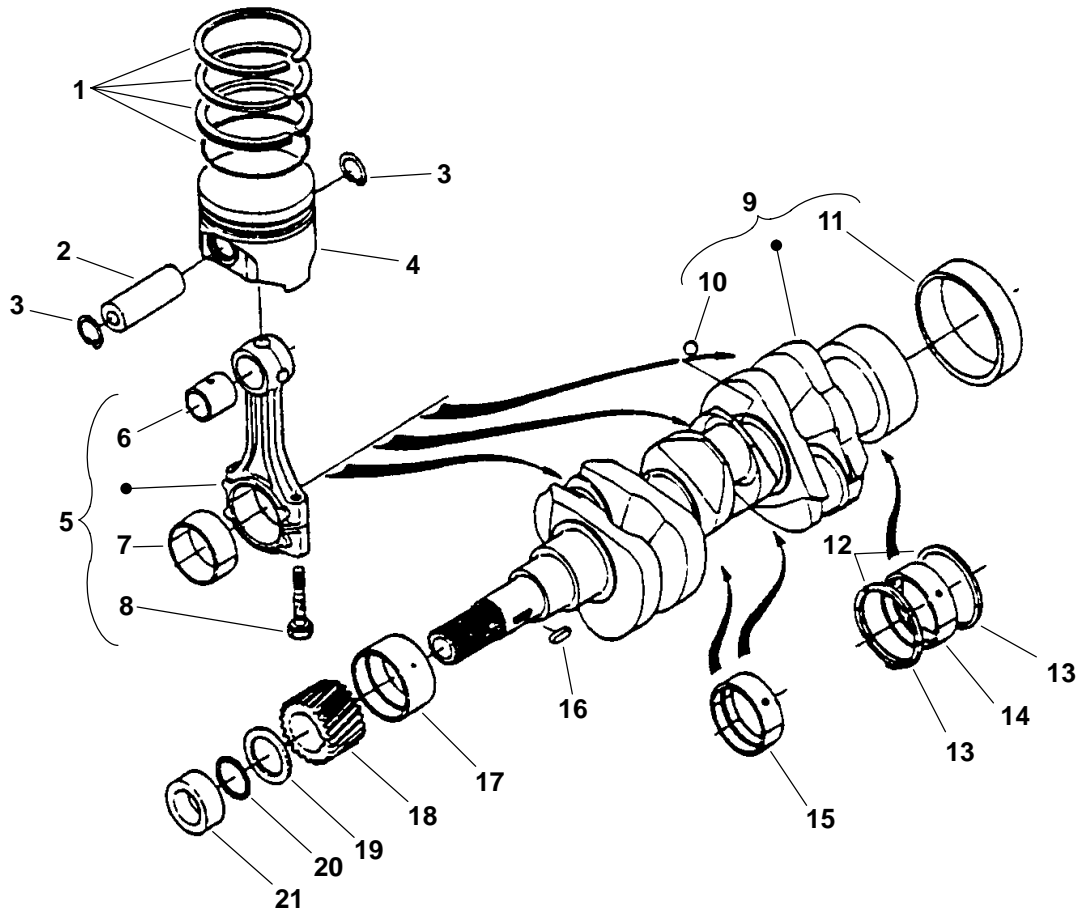
Cylinder Block



REF NO.	PART NO.	QTY USED	PART DESCRIPTION	REF NO.	PART NO.	QTY USED	PART DESCRIPTION
	100-3273	1	Engine, Replacement	13	185-5414	1	*Gear, Oil Pump Drive
1	185-6704	1	Block Assy, Cylinder (Includes Parts Marked *)	14	185-5412	1	*Pump, Oil
2	185-5484	2	*Cap, Sealing	15	185-5415	1	*Key, Feather
3	185-5485	1	*Plug	16	185-5482	3	*Cap, Sealing
4	185-5487	2	*Pin, Straight	17	185-5488	2	*Pin, Hollow
5	185-5483	5	*Cap, Sealing	18	185-5490	1	*Cock, Drain
6	185-2233	3	*Plug, Pipe	19	185-2095	1	*O'Ring
7	185-2188	5	*Plug, Pipe	20	185-2094	1	*Pin, Hollow
8	185-2234	1	*Plug, Pipe	21	185-5486	2	*Pin, Straight
9	185-2115	2	*Pin, Hollow	22	185-5489	1	*Cover, Fuel Camshaft
10	185-5413	1	*Gasket, Oil Pump	23	185-5492	1	Switch, Oil Pressure (S15)
11	185-5491	3	*Screw, Hex Head Cap				
12	185-5416	1	*Nut, Flange Hex				

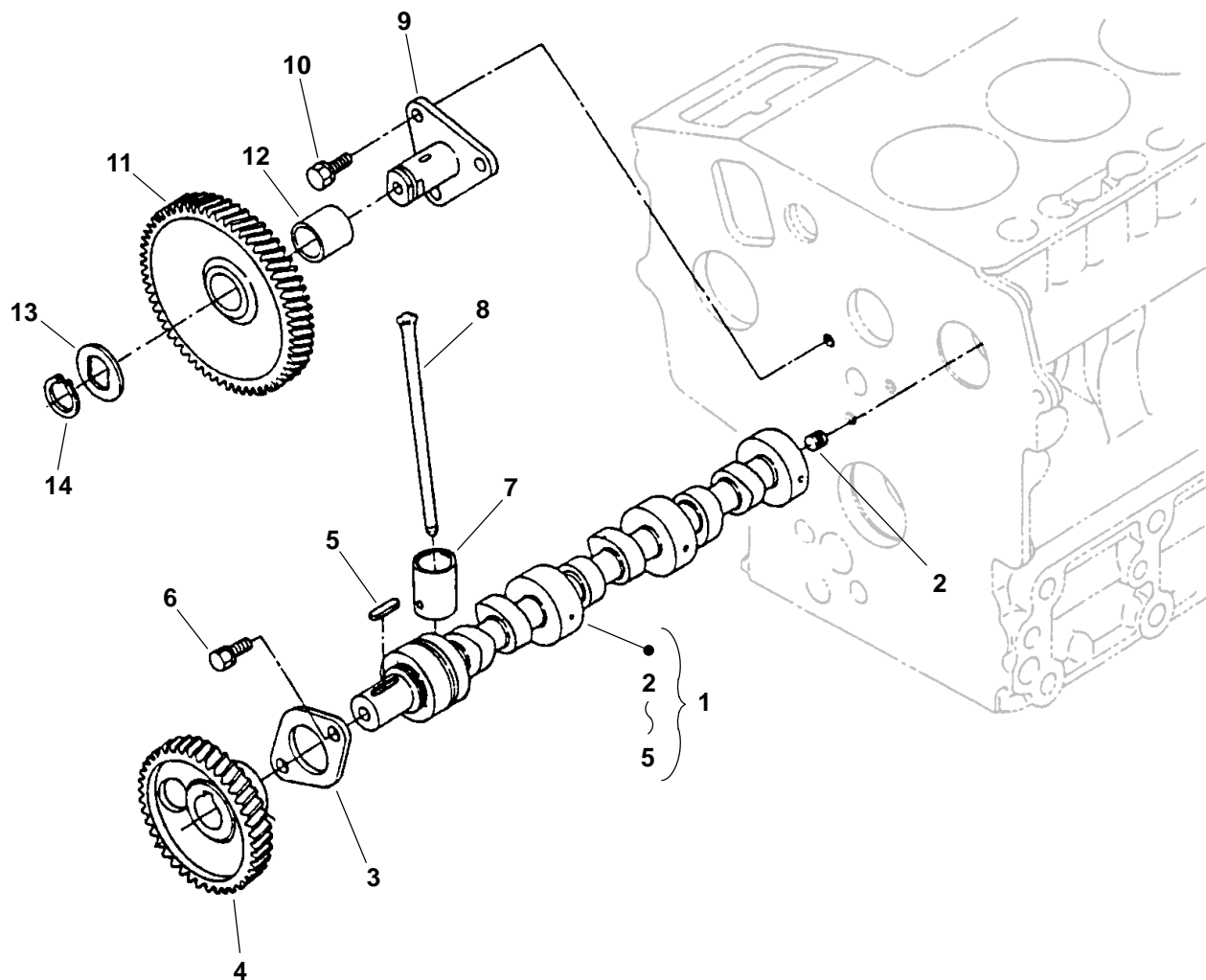
* - Parts Included in Cylinder Block Assy.

Crankshaft



REF NO.	PART NO.	QTY USED	PART DESCRIPTION	REF NO.	PART NO.	QTY USED	PART DESCRIPTION
1	185-7076	3	Set, Piston Ring	13	185-2023	2	Bearing, Thrust
	185-5351	3	Standard		185-2030	2	Standard
2	185-5568	3	+ 0.25 mm		185-2031	2	+ 0.20 mm
3	185-2016	6	Pin, Piston				+ 0.40 mm
4			Ring, Retaining	14			Set, Bearing
			Piston		185-5581	2	Standard
	185-5566	3	Standard		185-5360	2	- 0.20 mm
	185-5350	3	+ 0.25 mm		185-5361	2	- 0.40 mm
5	185-5569	3	Rod, Connecting (Includes Bushings and Bolt)	15			Set, Bearing
6	185-5358	3	Bushing, Connecting Rod		185-5580	2	Standard
7			Bushing, Connecting Rod		185-2026	2	- 0.20 mm
	185-5571	3	Standard		185-5357	2	- 0.40 mm
	185-5572	3	- 0.20 mm	16	185-2353	1	Key, Feather
	185-5573	3	- 0.40 mm	17			Bushing, Crankshaft
8	185-5570	6	Bolt, Connecting Rod		185-5577	1	Standard
9	185-6705	1	Crankshaft (Includes Ball and Sleeve)		185-5578	1	- 0.20 mm
10	185-5575	3	Ball		185-5579	1	- 0.40 mm
11	185-2033	1	Sleeve	18	185-5576	1	Gear, Crankshaft
12			Bearing, Thrust	19	185-5583	1	Slinger, Oil
	185-2022	2	Standard	20	185-5584	1	O'Ring
	185-2028	2	+ 0.20 mm	21	185-5582	1	Collar
	185-2029	2	+ 0.40 mm				

Camshaft

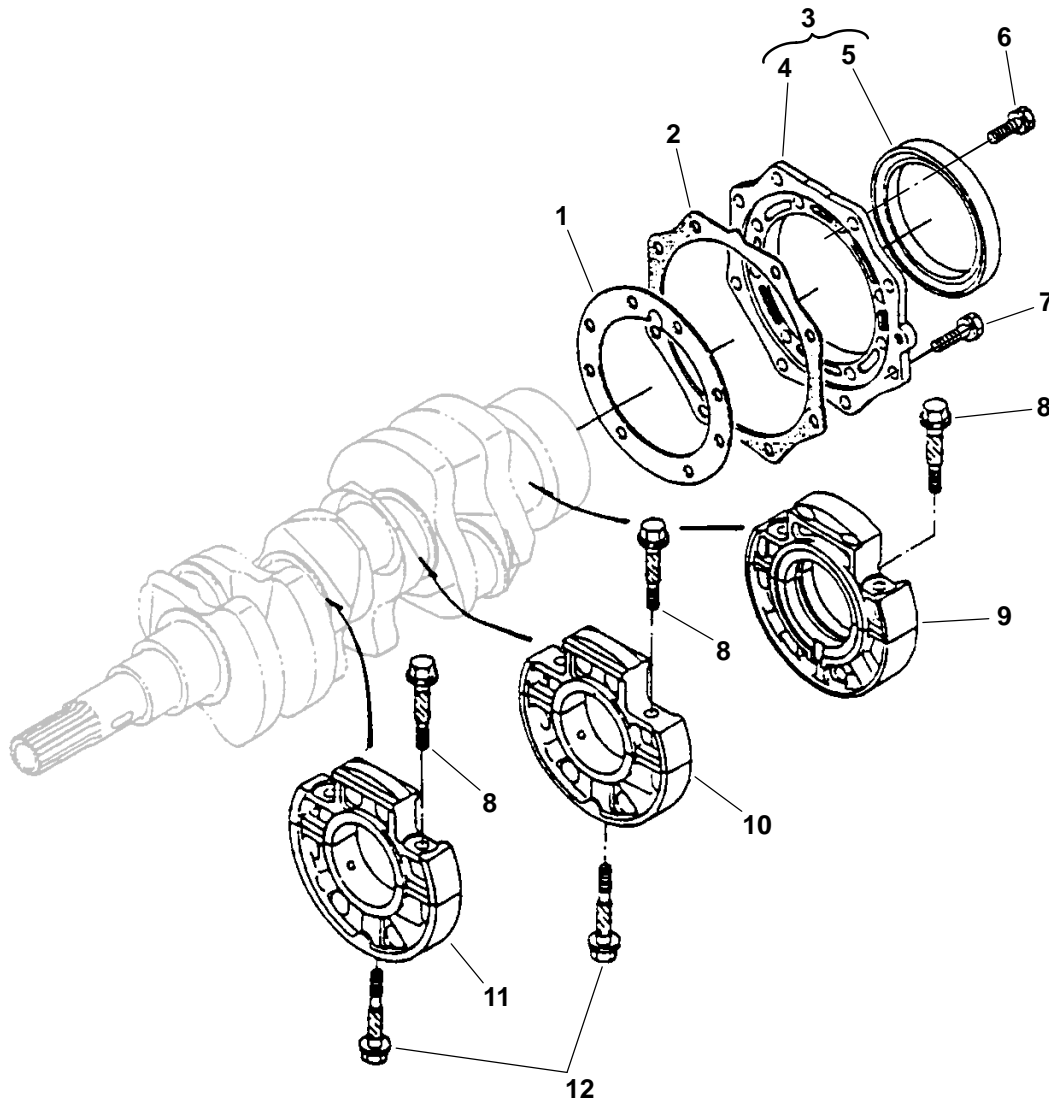


REF NO. ION	PART NO.	QTY USED	PART DESCRIPTION
1	185-7074	1	Camshaft Assy (Includes Parts Marked *)
2	185-5558	1	*Screw, Set
3	185-5561	1	*Plate, Retaining
4	185-7075	1	*Gear, Camshaft
5	185-5560	1	*Key, Feather
6	185-2386	2	Screw, Hex Washer Head W/Lock Cap (M6 x 12mm)
7	185-5554	6	Tappet
8	185-5555	6	Rod, Push

REF NO.	PART NO.	QTY USED	PART DESCRIPT
9	185-5565	1	Shaft, Idle Gear
10	185-2387	3	Screw, Hex Washer Head Cap W/ Lock (M6 x 14mm)
11	185-5562	1	Gear, Idle (Includes Bushing)
12	185-5810	1	Bushing, Idle Gear
13	185-5563	1	Spacer
14	185-5564	1	Ring, Retaining

* - Parts Included in Camshaft Assy.

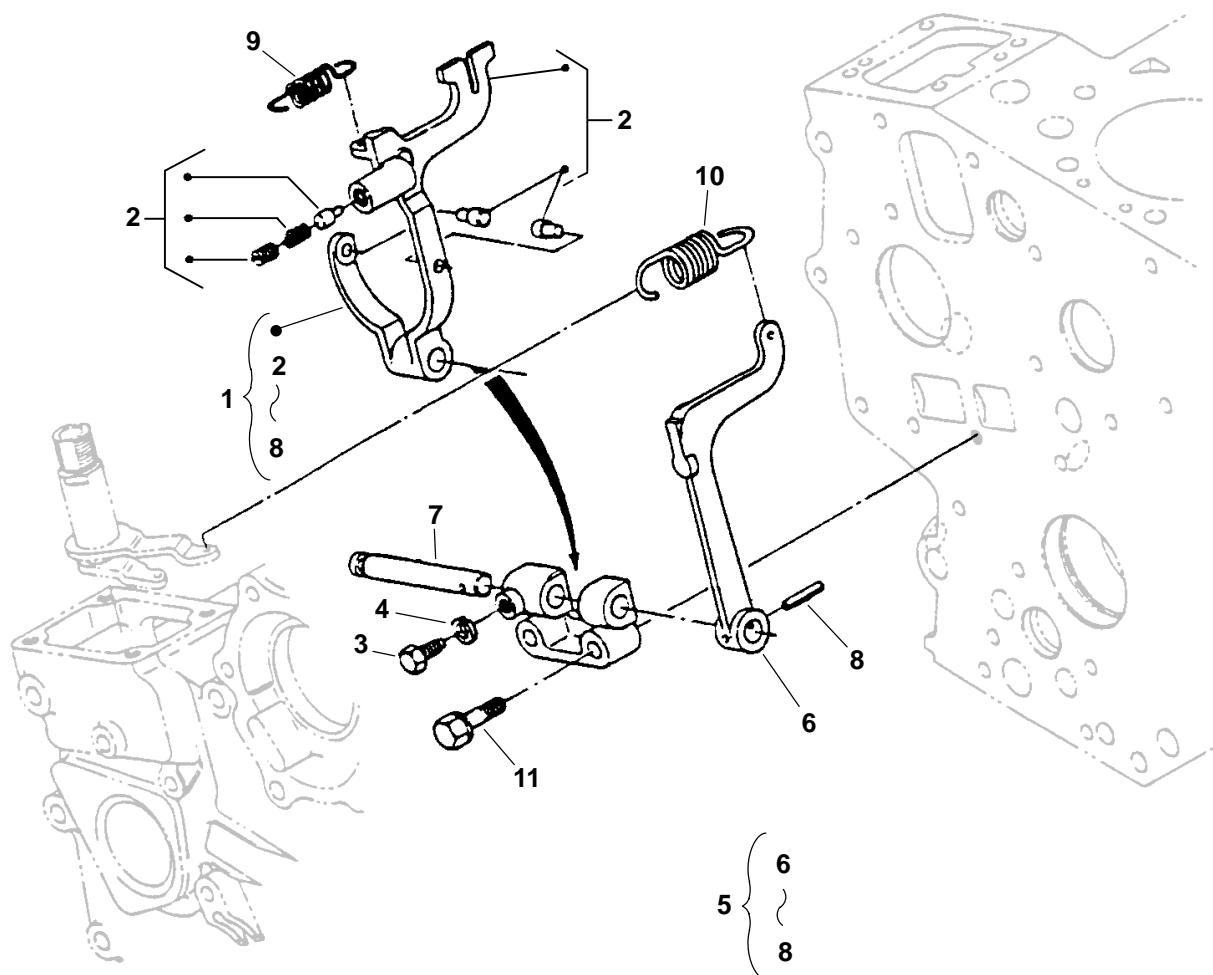
Main Bearing Holders



REF NO.	PART NO.	QTY USED	PART DESCRIPTION
1	185-5438	1	Gasket
2	185-7383	1	Gasket
3	185-7073	1	Cover Assy, Main Bearing Case (Includes Cover and Seal)
4	185-5516	1	Cover, Bearing Plate
5	185-5437	1	Seal, Oil
6	185-2390	8	Screw, Hex Head W/ Lock Cap Washer (M6 x 20mm)

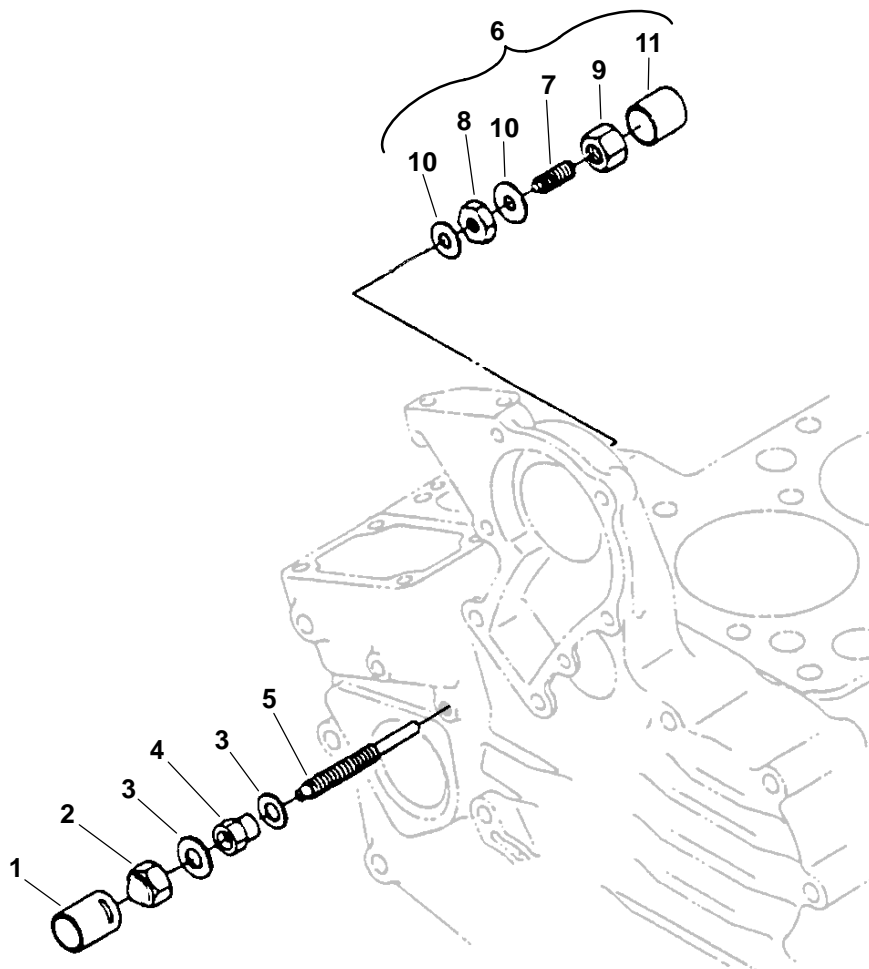
REF NO.	PART NO.	QTY USED	PART DESCRIPTION
7	185-2559	8	Screw, Hex Head Cap
8	185-5515	6	Screw, Hex Head Cap
9	185-7072	1	Holder, Main Rear Bearing
10	185-5808	1	Holder, Main Center Bearing
11	185-5517	1	Holder, Main Front Bearing
12	185-5519	2	Bolt, Bearing Case

Fork Lever



REF NO.	PART NO.	QTY USED	PART DESCRIPTION	REF NO.	PART NO.	QTY USED	PART DESCRIPTION
1	185-6945	1	Lever Assy, Fork (Includes Parts Marked *)	8	185-5696	1	*Pin, Spring
2	185-7079	1	*Lever, Inner Fork	9	185-6947	1	Spring, Start
3	185-2173	1	*Screw, Hex Head Cap	10	185-6946	1	Spring, Governor
4	185-6999	1	*Washer, Spring Lock	11	185-2393	2	Screw, Hex Head Cap (M6 x 35mm)
5	185-5701	1	*Lever Assy, Outer Fork (Includes Lever, Shaft and Pin)	* - Parts Included in Fork Lever Assy.			
6	185-5702	1	*Lever, Outer Fork				
7	185-5703	1	*Shaft				

Speed Control

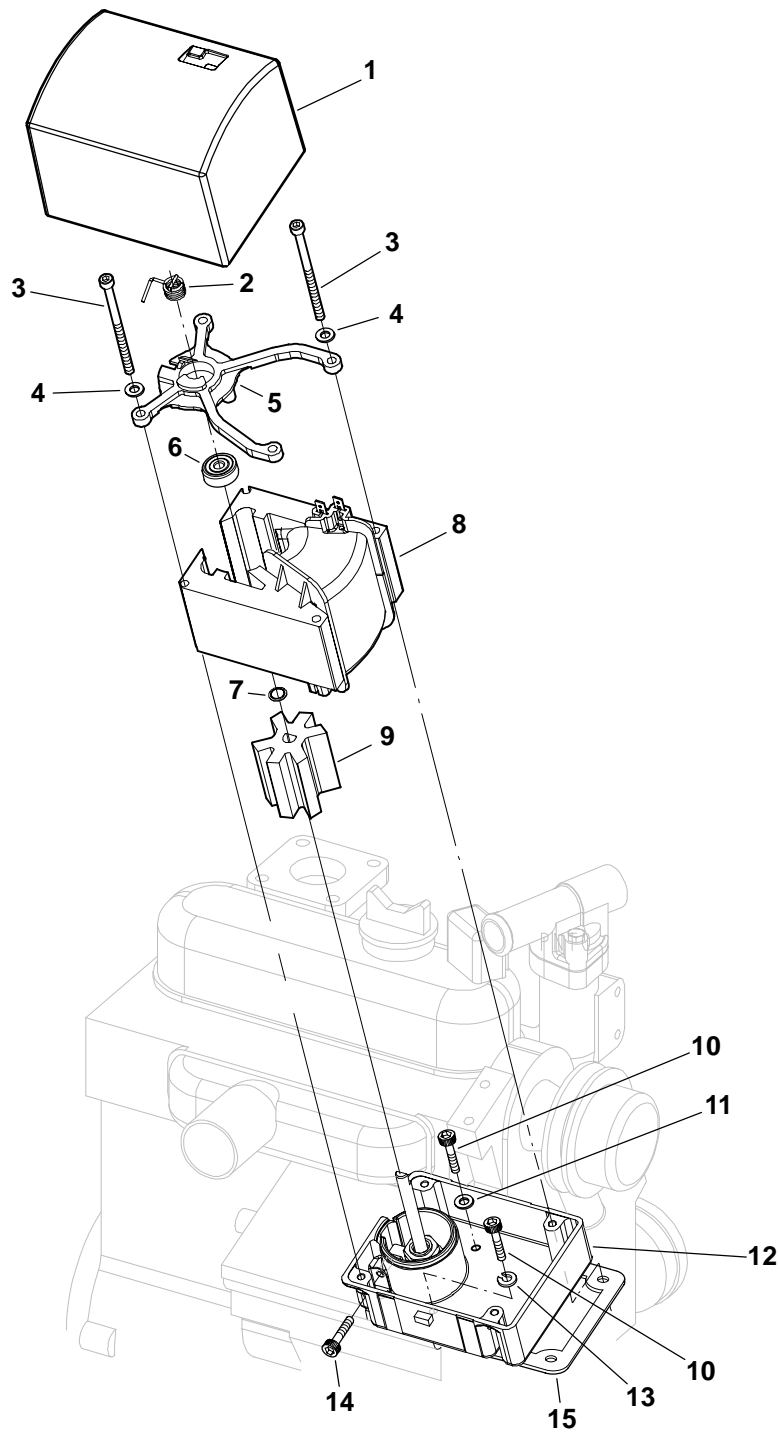


REF NO.	PART NO.	QTY USED	PART DESCRIPTION
1	185-2283	1	Cap
2	185-5685	1	Nut, Cap
3	185-2284	2	Gasket
4	185-6931	1	Nut, Hex
5	185-7078	1	Screw, Adjusting
6	185-5679	1	Idle Assy (Includes Parts Marked *)
7	185-5680	1	*Bolt, Adjusting (Includes Nuts)

REF NO.	PART NO.	QTY USED	PART DESCRIPTION
8	185-2180	1	*Nut, Hex
9	185-5681	1	*Nut, Cap
10	185-2338	2	*Gasket
11	185-5682	1	*Cap

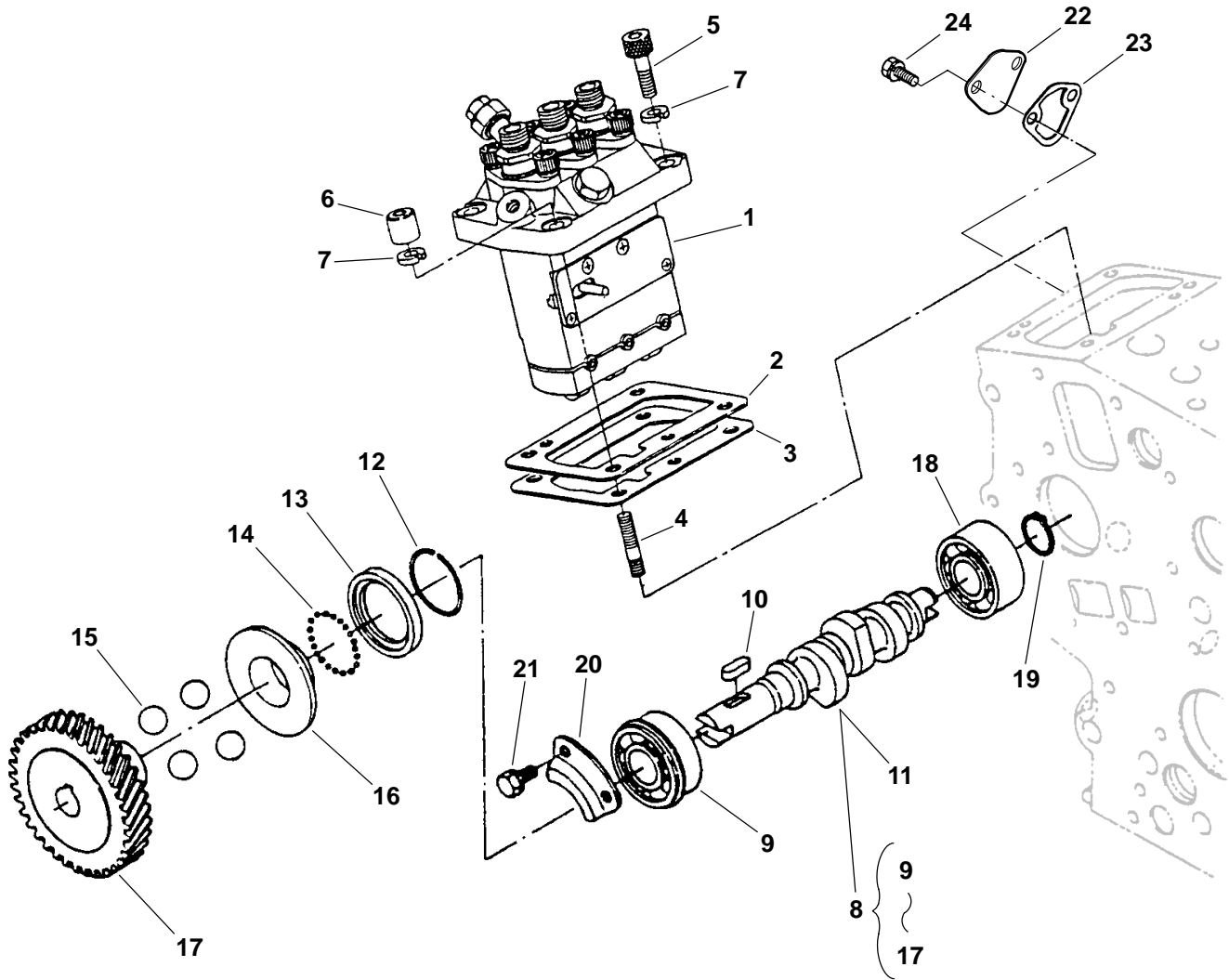
* – Parts Included in Idle Assy.

Governor



REF NO.	PART NO.	QTY USED	PART DESCRIPTION	REF NO.	PART NO.	QTY USED	PART DESCRIPTION
1	150-2641	1	Cover, Governor	9	150-2639	1	Rotor, Governor
2	150-2724	1	Spring, Governor	10	725-1027	4	Screw, Socket Head Cap (M6-16)
3	815-0877	4	Screw, Socket Head Cap (M5 x .8 x 80mm)	11	185-2284	2	Gasket
4	740-1002	4	Washer, Flat (M5)	12	185-7267	1	Base, Governor
5	150-2643	1	Carrier Assy (Includes Bearing)	13	850-2006	2	Washer, Lock (M6)
6	510-0184	1	Bearing, Ball	14	802-2506	1	Screw, Socket Set (M5 x .8 x 16mm)
7	518-0672	1	O'Ring, Governor Rotor	15	185-7080	1	Gasket, Governor Base
8	150-2630	1	Stator, Wound Governor				

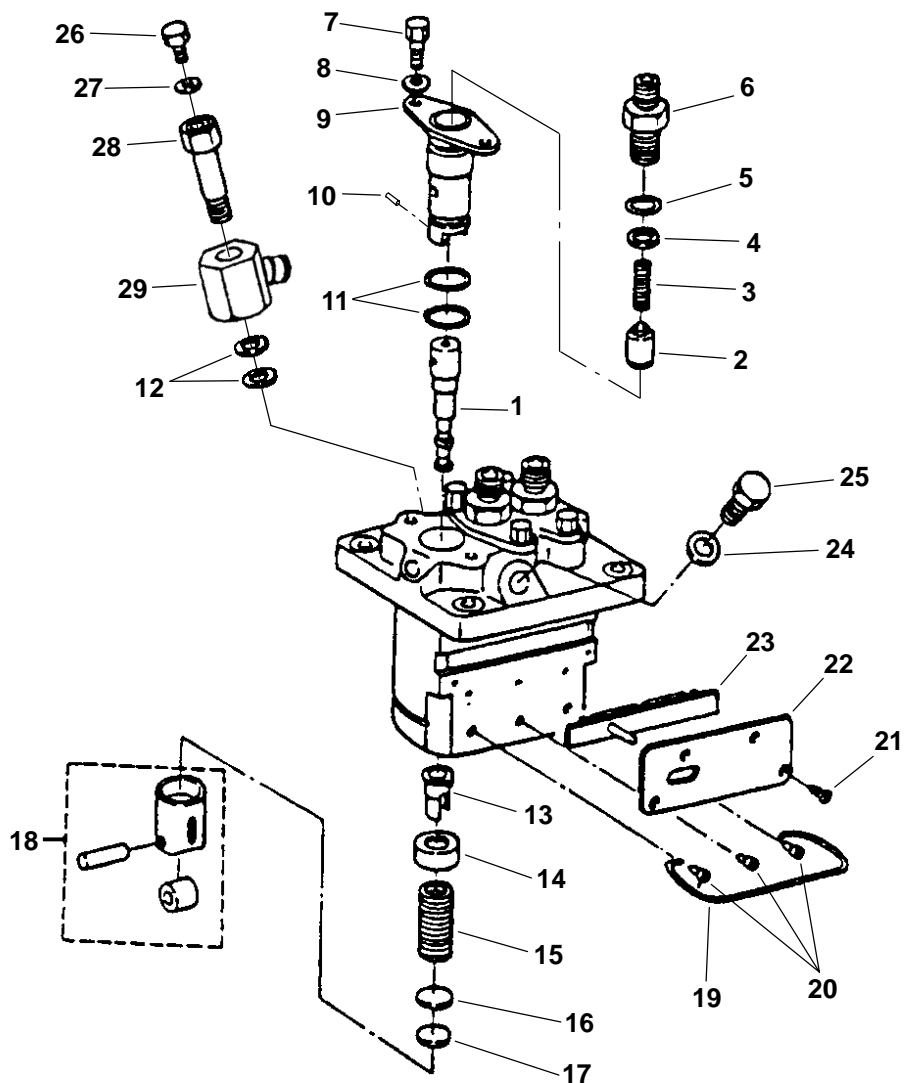
Injection Pump



REF NO.	PART NO.	QTY USED	PART DESCRIPTION	REF NO.	PART NO.	QTY USED	PART DESCRIPTION
1	185-6937	1	Pump, Injection	14	185-2357	32	*Ball
2	185-6749	1	Shim, Injection Pump	15	185-5633	4	*Ball
	185-6845	1	.20mm	16	185-5631	1	*Sleeve, Governor
3	185-6739	1	Shim, Injection Pump	17	185-5630	1	*Gear, Injection Pump
4	185-5624	2	Stud	18	510-0163	1	Bearing
5	185-5623	2	Screw, Socket Head Cap	19	185-5634	1	Circlip
6	185-5625	2	Nut, Cap	20	185-5635	1	Plate, Retaining
7	185-6759	4	Washer, Spring Lock	21	185-2386	2	Screw, Hex Lock Washer Cap (M6 x 12mm)
8	185-7077	1	Camshaft Assy, Fuel (Includes Parts Marked *)	22	185-5798	1	Cover, Hole
9	185-5629	1	*Bearing, Ball	23	185-6580	1	Gasket, Hole Cover
10	185-2353	1	*Key, Feather	24	185-2389	2	Screw, Hex Head Cap
11	185-6706	1	*Camshaft, Fuel				
12	185-2163	1	*Circlip, Governor Sleeve				
13	185-5632	1	*Case, Governor Ball				

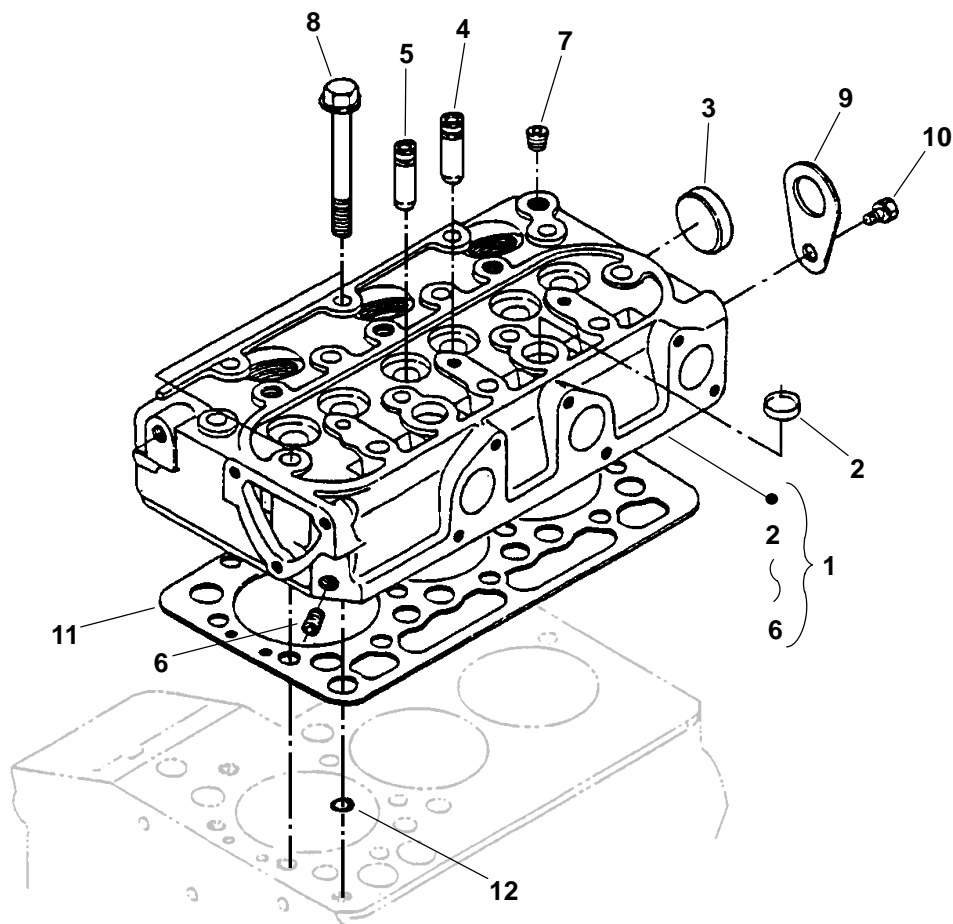
* - Parts Included in Fuel Camshaft Assy.

Injection Pump Components



REF NO.	PART NO.	QTY USED	PART DESCRIPTION	REF NO.	PART NO.	QTY USED	PART DESCRIPTION
	185-6937	1	Pump Assy, Injection	15	185-5652	3	Spring, Plunger
1	185-5638	3	Plunger, Injection Pump	16	185-5654	3	Seat, Lower Spring
2	185-5639	3	Valve, Delivery	17	185-5655	3	Shim
3	185-5640	3	Spring, Delivery Valve	18	185-5649	3	Tappet
4	185-5641	3	Gasket, Delivery Valve	19	185-6707	1	Wire, Retainer
5	185-5643	3	O'Ring	20	185-5650	3	Pin
6	185-5642	3	Holder, Delivery Valve	21	185-5658	4	Screw, Machine
7	185-5647	6	Screw, Round Head Machine	22	185-5818	1	Plate
8	185-5648	6	Washer	23	185-5817	1	Rack, Control
9	185-5644	3	Flange, Sleeve	24	185-5820	1	Gasket, Injection Pump
10	185-5645	3	Pin, Joint	25	185-5819	1	Bolt
11	185-5646	6	O'Ring	26	185-5662	1	Screw
12	185-5661	2	O'Ring	27	185-5663	1	Gasket
13	185-5659	3	Sleeve, Control	28	185-5660	1	Screw, Follow
14	185-5653	3	Seat, Upper Spring	29	185-5626	1	Joint, Eye

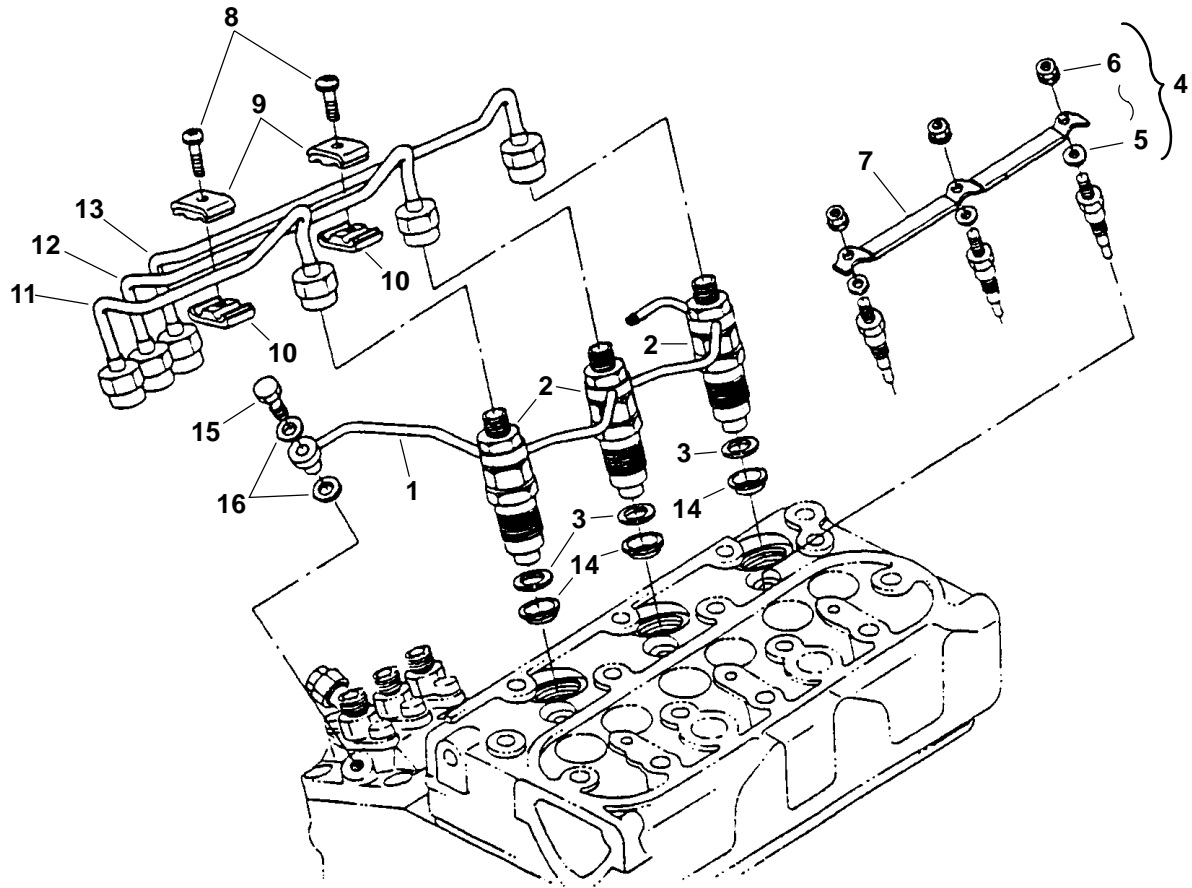
Cylinder Head



REF NO.	PART NO.	QTY USED	PART DESCRIPTION	REF NO.	PART NO.	QTY USED	PART DESCRIPTION
1	185-5805	1	Head Assy, Cylinder (Includes Parts Marked *)	8	185-5503	14	Bolt, Cylinder Head
2	185-2413	2	*Cap, Sealing	9	185-2414	1	Eye, Lifting
3	185-2411	1	*Cap, Sealing	10	185-6956	1	Screw, Hex Head Cap
4	185-5501	3	*Guide, Exhaust Valve	11	185-6120	1	Gasket, Cylinder Head
5	185-5500	3	*Guide, Intake Valve	12	185-2095	1	O'Ring
6	185-2188	1	*Plug, Pipe				
7	185-5502	1	Plug, Pipe				

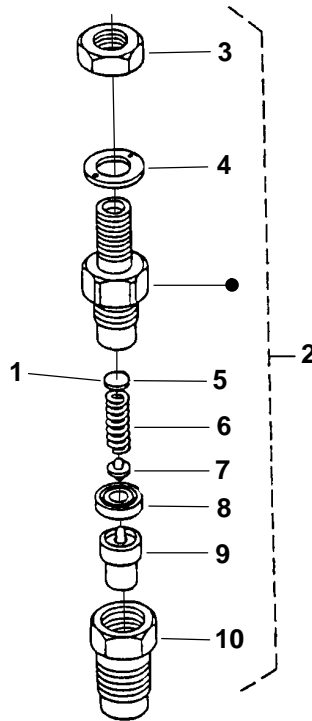
* – Parts Included in Cylinder Head Assy.

Injection Nozzle



REF NO.	PART NO.	QTY USED	PART DESCRIPTION	REF NO.	PART NO.	QTY USED	PART DESCRIPTION
1	185-6948	1	Pipe, Overflow	9	185-2345	2	Clamp, Top Pipe
2	185-6738	3	Holder, Nozzle	10	185-5612	2	Clamp, Bottom Pipe
3	185-5337	3	Gasket	11	185-5610	1	Pipe, Injection
4	185-5421	3	Plug, Glow (HR5) (Includes Washer and Nut)	12	185-5611	1	Pipe, Injection
5	185-7004	3	Washer, Plain	13	185-5822	1	Pipe, Injection
6	185-5615	3	Nut, Flange	14	185-5985	3	Seal, Heat
7	185-5823	1	Cord, Glow Plug	15	185-7082	1	Screw, Air Bleeder
8	185-2385	2	Screw, Pan Head Machine W/Lock Washer	16	185-2284	2	Gasket

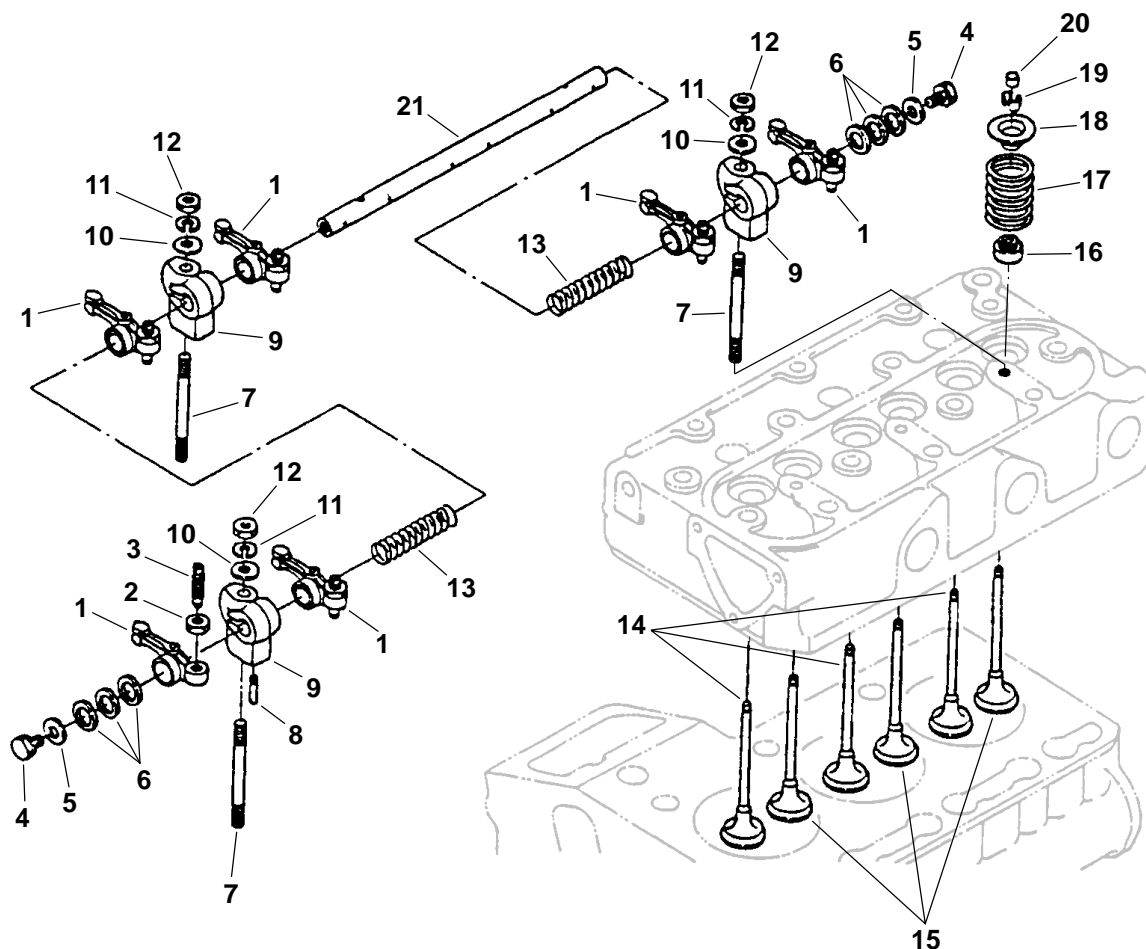
Injection Nozzle Components



REF NO.	PART NO.	QTY USED	PART DESCRIPTION	REF NO.	PART NO.	QTY USED	PART DESCRIPTION
1	185-5363	3	Washer Assy – Includes the Following Adjusting Washers:	185-5391	3	1.575 mm	
	185-5364	3	0.900 mm	185-5392	3	1.600 mm	
	185-5365	3	0.925 mm	185-5393	3	1.625 mm	
	185-5366	3	0.950 mm	185-5394	3	1.650 mm	
	185-5367	3	0.975 mm	185-5395	3	1.675 mm	
	185-5368	3	1.000 mm	185-5396	3	1.700 mm	
	185-5369	3	1.025 mm	185-5397	3	1.725 mm	
	185-5370	3	1.050 mm	185-5398	3	1.750 mm	
	185-5371	3	1.075 mm	185-5399	3	1.775 mm	
	185-5372	3	1.100 mm	185-5400	3	1.800 mm	
	185-5373	3	1.125 mm	185-5401	3	1.825 mm	
	185-5374	3	1.150 mm	185-5402	3	1.850 mm	
	185-5375	3	1.175 mm	185-5403	3	1.875 mm	
	185-5376	3	1.200 mm	185-5404	3	1.900 mm	
	185-5377	3	1.225 mm	185-5405	3	1.925 mm	
	185-5378	3	1.250 mm	185-5406	3	1.950 mm	
	185-5379	3	1.275 mm	2	185-6738	3	Holder Assy, Nozzle (Includes Parts Marked *)
	185-5380	3	1.300 mm	3	185-5616	3	*Nut, Hex
	185-5381	3	1.325 mm	4	185-5621	3	*Washer
	185-5382	3	1.350 mm	5	185-5364	3	*Washer, Adjusting
	185-5383	3	1.375 mm	6	185-5617	3	*Spring
	185-5384	3	1.400 mm	7	185-5619	3	*Rod, Push
	185-5385	3	1.425 mm	8	185-5618	3	*Spacer
	185-5386	3	1.450 mm	9	185-5622	3	*Nozzle
	185-5387	3	1.475 mm	10	185-6825	3	*Nut, Nozzle
	185-5388	3	1.500 mm				
	185-5389	3	1.525 mm				
	185-5390	3	1.550 mm				

* – Parts Included in Nozzle Holder Assy.

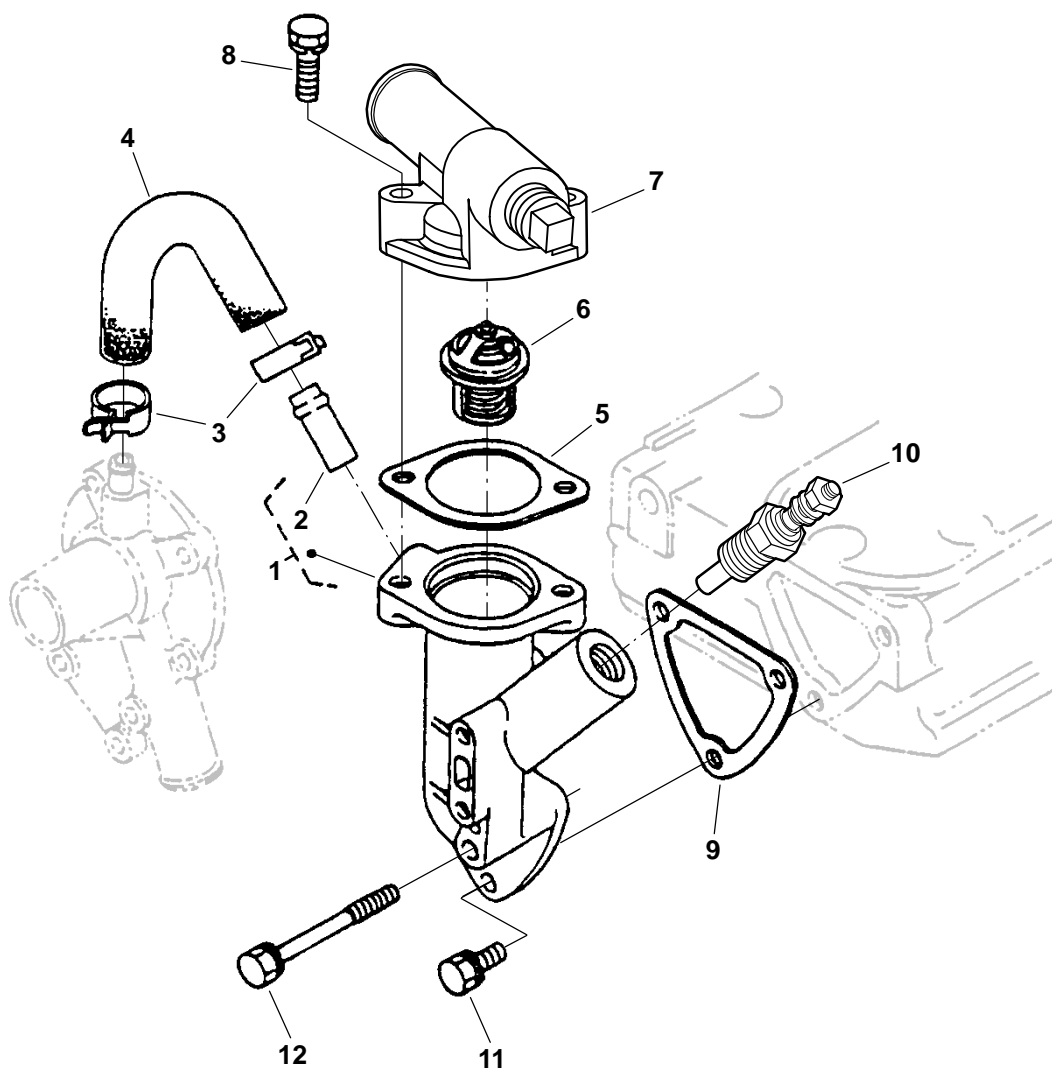
Rocker Arm



REF NO.	PART NO.	QTY USED	PART DESCRIPTION
1	185-5551	6	Arm, Rocker (Includes Nut and Screw)
2	185-5553	6	Nut
3	185-5552	6	Screw, Adjusting
4	185-2386	2	Screw, Hex Head Cap (M6 x 12mm)
5	185-5545	2	Washer, Flat
6	185-7086	6	Washer, Flat
7	185-5547	3	Stud
8	185-2351	1	Screw, Set
9	185-5546	3	Bracket, Rocker Arm
10	740-1004	3	Washer, Flat (M6)

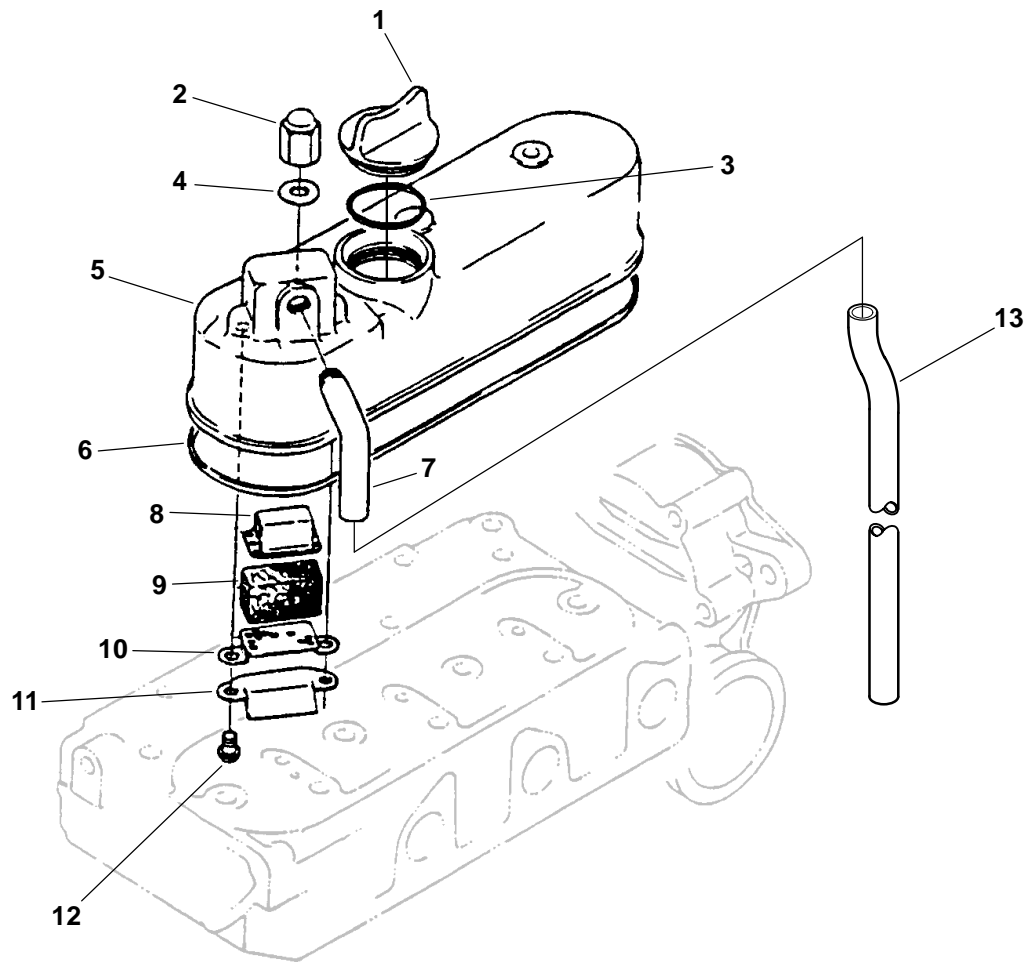
REF NO.	PART NO.	QTY USED	PART DESCRIPTION
11	185-6759	3	Washer, Spring Lock
12	185-4255	3	Nut, Flange
13	185-5550	2	Spring, Rocker Arm
14	185-5537	3	Valve, Intake
15	185-5538	3	Valve, Exhaust
16	185-5348	6	Seal, Valve Stem
17	185-5539	6	Spring, Valve
18	185-5540	6	Retainer, Valve Spring
19	185-5541	6	Collet, Valve Spring
20	185-5542	6	Cap, Valve
21	185-7085	1	Shaft, Rocker Arm

Water Outlet



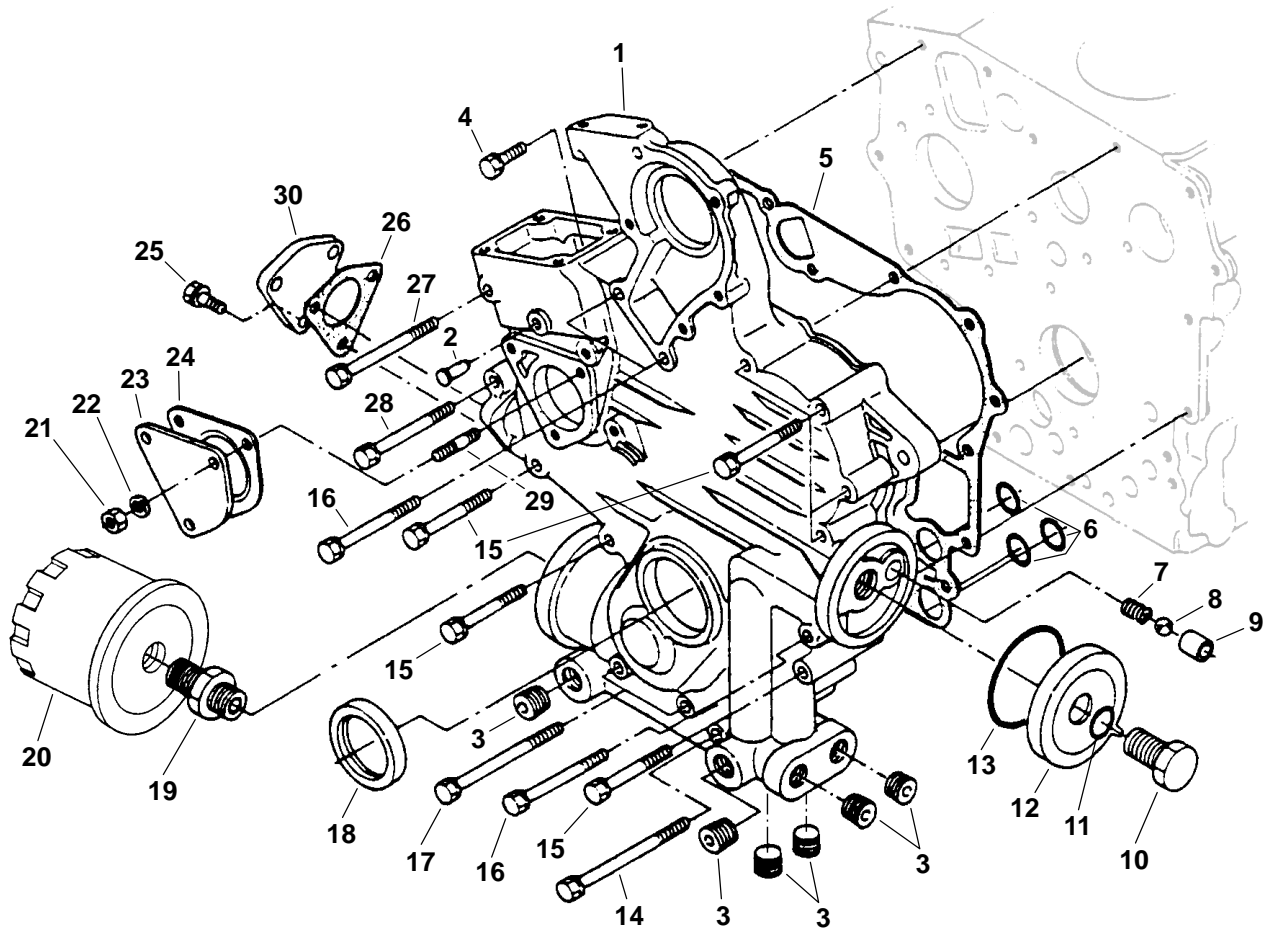
REF NO.	PART NO.	QTY USED	PART DESCRIPTION	REF NO.	PART NO.	QTY USED	PART DESCRIPTION
1	185-5718	1	Flange, Water Pump (Includes Water Return Pipe)	7	185-5792	1	Cover, Thermostat
2	185-5719	1	Pipe, Water Return	8	185-7084	2	Bolt
3	185-6667	2	Band, Pipe	9	185-5720	1	Gasket, Water Flange
4	185-5722	1	Pipe, Water Return	10	193-0318	1	Sender, Water Temperature
5	185-2238	1	Gasket, Thermostat	11	185-2388	2	Bolt (M6 x 16mm)
6	185-5458	1	Thermostat	12	185-5721	1	Bolt

Valve Cover



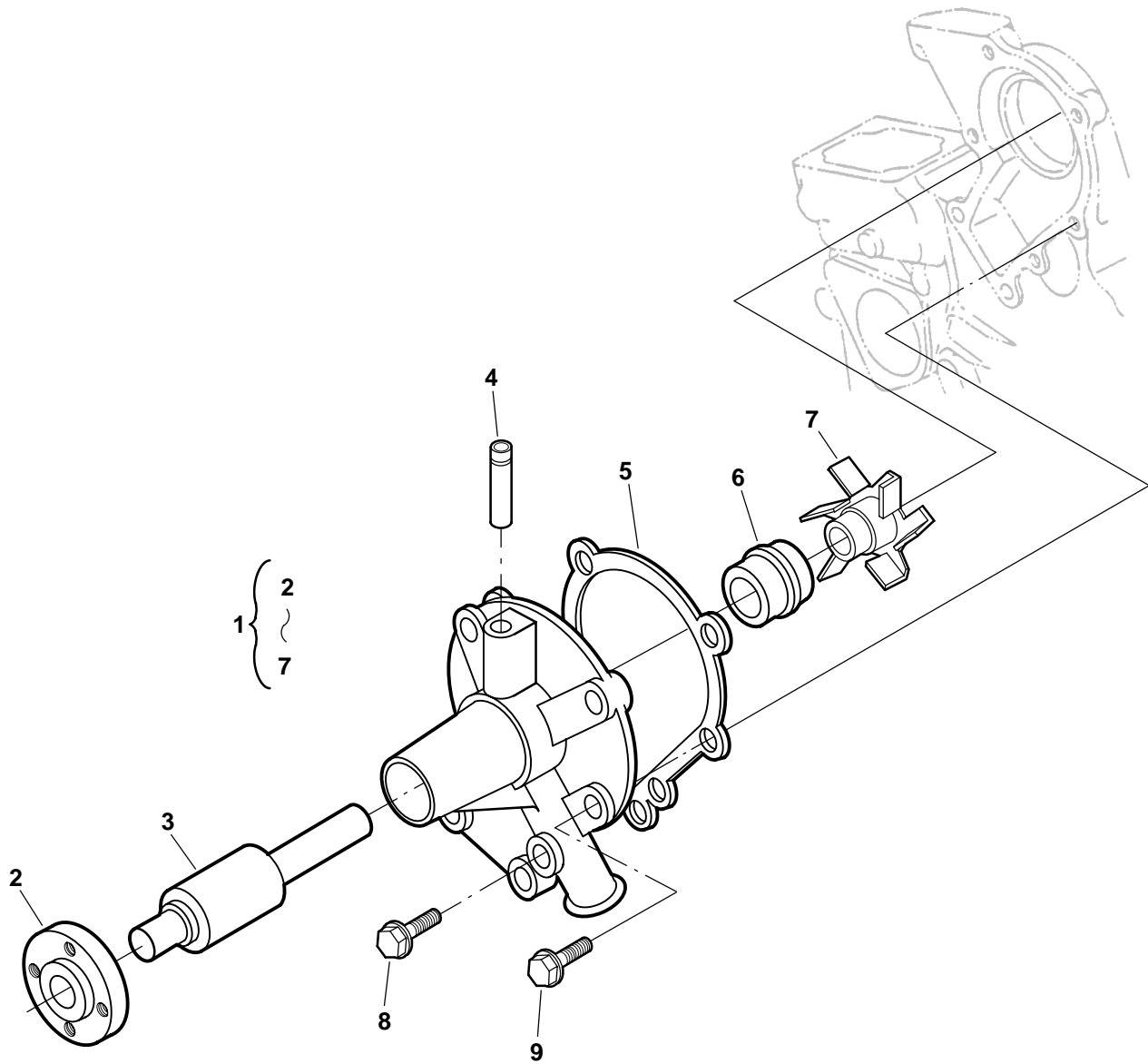
REF NO.	PART NO.	QTY USED	PART DESCRIPTION	REF NO.	PART NO.	QTY USED	PART DESCRIPTION
1	185-5407	1	Cap, Oil Fill	8	185-5522	1	Cover, Breather Element
2	185-5529	3	Nut, Cap	9	185-5523	1	Element, Breather
3	185-2349	1	Seal, Oil Fill Cap	10	185-5521	1	Plate, Breather Element
4	185-2284	3	O'Ring	11	185-5524	1	Shield, Breather Oil
5	185-7071	1	Cover, Valve	12	185-5747	2	Screw, Pan Head Lock Washer
6	185-5807	1	Gasket, Valve Cover	13	185-5525	1	Hose, Breather
7	185-5520	1	Elbow, Breather				

Gearcase



REF NO.	PART NO.	QTY USED	PART DESCRIPTION	REF NO.	PART NO.	QTY USED	PART DESCRIPTION
1	185-5800	1	Gearcase Assy (Includes Pin and Plugs)	16	185-5507	3	Screw, Hex Head Cap (M6 x 1 x 62mm)
2	185-5506	1	Pin, Start Spring	17	185-5745	2	Bolt
3	185-5505	8	Plug, Pipe	18	185-5410	1	Seal, Front Oil
4	185-2389	1	Screw, Hex Head Cap (M6 x 18mm)	19	185-2124	1	Nipple, Hex Pipe
5	185-5411	1	Gasket, Gearcase	20	122-0833	1	Filter, Oil
6	185-2374	3	O'Ring	21	185-4255	3	Nut, Hex
7	185-5509	1	Spring	22	185-6759	3	Washer, Spring Lock
8	185-6711	1	Ball	23	185-5512	1	Cover
9	185-5510	1	Seat, Valve	24	185-5513	1	Gasket
10	185-5742	1	Bolt	25	185-2389	3	Bolt (M6 x 18mm)
11	185-5744	1	O'Ring	26	185-2309	1	Gasket, Flange
12	185-5741	1	Cover	27	185-7070	1	Screw, Hex Head Cap (M6 x 70mm)
13	185-5743	1	O'Ring	28	185-2395	1	Bolt (M6 x 60mm)
14	185-5746	1	Screw, Hex Head Cap (M6 x 1 x 87mm)	29	185-2105	3	Stud
15	185-7069	7	Screw, Hex Head Cap (M6 x 50mm)	30	185-6257	1	Cover

Water Pump Components

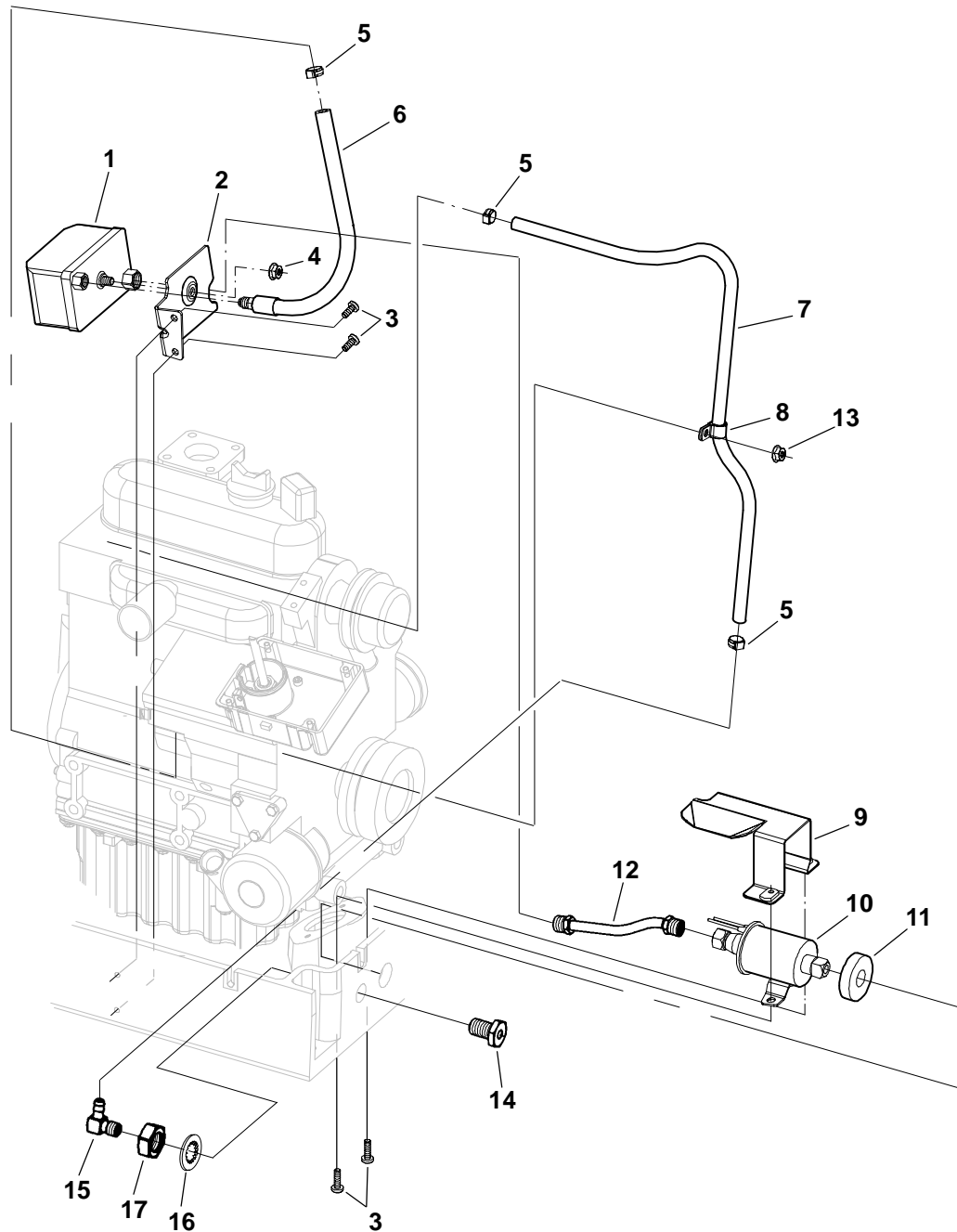


REF NO.	PART NO.	QTY USED	PART DESCRIPTION
1	185-5433	1	Pump, Water (Includes Parts Marked *)
2	185-5712	1	*Flange, Water Pump
3	185-5713	1	*Bearing, Ball
4	185-5716	1	*Pipe, Return
5	185-5434	1	*Gasket, Water Pump
6	185-5714	1	*Seal

REF NO.	PART NO.	QTY USED	PART DESCRIPTION
7	185-5715	1	*Impeller
8	185-5717	1	Bolt
9	185-2559	4	Bolt

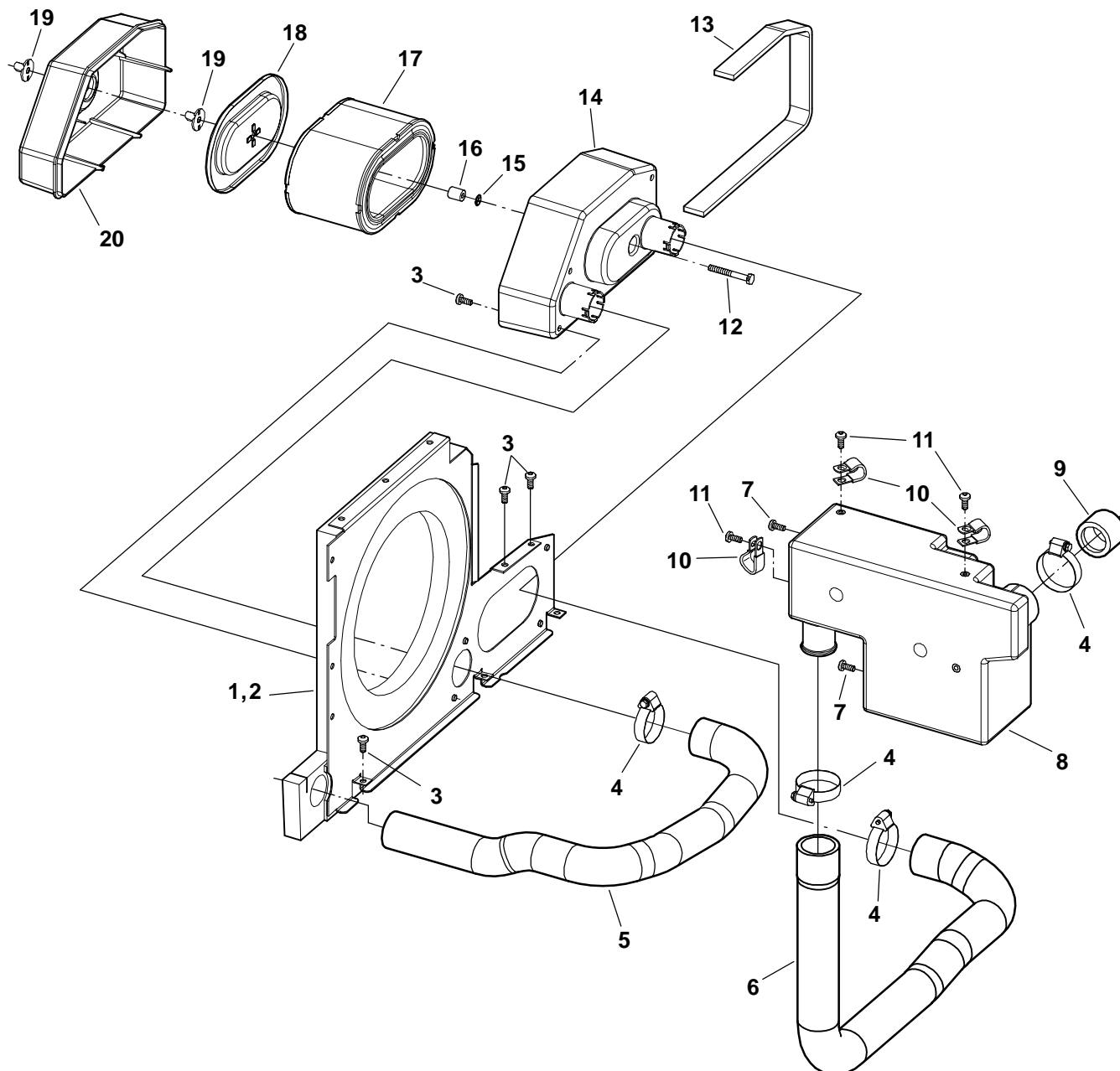
* – Parts Included in Water Pump.

Fuel System



REF NO.	PART NO.	QTY USED	PART DESCRIPTION	REF NO.	PART NO.	QTY USED	PART DESCRIPTION
1	149-2513	1	Filter, Fuel	9	403-3863-02	1	Trough, Oil Drain
2	149-2585-02	1	Bracket, Fuel Filter	10	149-2583	1	Pump, Fuel (E2)
3	823-0003-02	4	Screw, Lock Flange (M6 x 1 x 14mm)	11	403-3860	1	Seal, Fuel Pump
4	870-0257	1	Nut, Self Lock (1/4-20)	12	149-2584	1	Line, Fuel Filter
5	503-0170	3	Clamp, Hose	13	870-2054	1	Nut, Lock Flange (M6 x 1)
6	149-2580	1	Line, Fuel Injection Pump	14	502-1296-02	1	Fitting, Bulkhead
7	503-2052	1	Line, Fuel Return	15	502-0313	1	Elbow, 90°
8	332-1554	1	Clamp, Loop	16	854-0028	1	Washer, IT Lock (5/8")
				17	868-0007	1	Nut, Hex Jam (5/8-18)

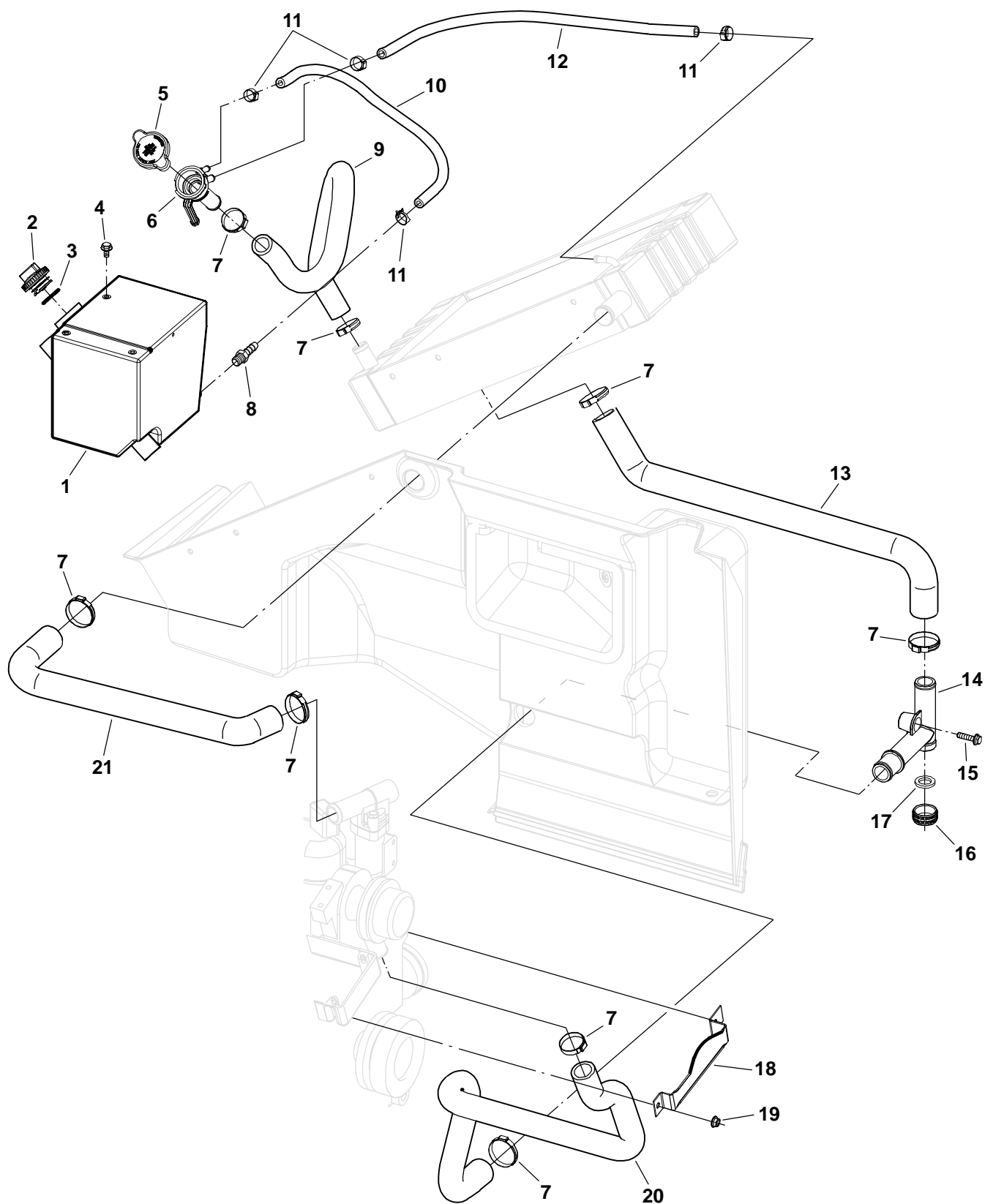
Air Intake



REF NO.	PART NO.	QTY USED	PART DESCRIPTION
1	134-5063	1	Baffle Assy, Inlet (Includes Insulation)
2	405-5756	1	Insulation, Inlet Baffle
3	823-0003-02	9	Screw, Pan Head (M6 x 1 x 14mm)
4	503-0429	4	Clamp, Hose
5	503-1979	1	Hose, Intake (Dirty)
6	503-1985	1	Hose, Intake (Clean)
7	823-1002-04	2	Screw, Pan Head Machine (M6 x 1 x 14mm)
8	134-5126	1	Resonator, Intake
9	140-2898	1	Sleeve, Air Intake
10	332-1356	3	Clamp, Loop

REF NO.	PART NO.	QTY USED	PART DESCRIPTION
11	823-1002-03	3	Screw, Pan Head Machine (M6 x 1 x 10mm)
12	800-0603-01	1	Screw, Hex Head Machine (1/4-20 x 2)
13	140-2956	1	Seal, Housing
14	140-2896	1	Housing, Air Cleaner
15	870-0540-03	1	Nut, Push-On
16	140-2536-05	1	Seal, Air Cleaner Spacer
17	140-2897	1	Element, Air Cleaner
18	140-2961-02	1	Cover, Air Cleaner Element
19	865-0029	2	Nut, Wing (1/4-20)
20	140-2895	1	Cover, Air Cleaner

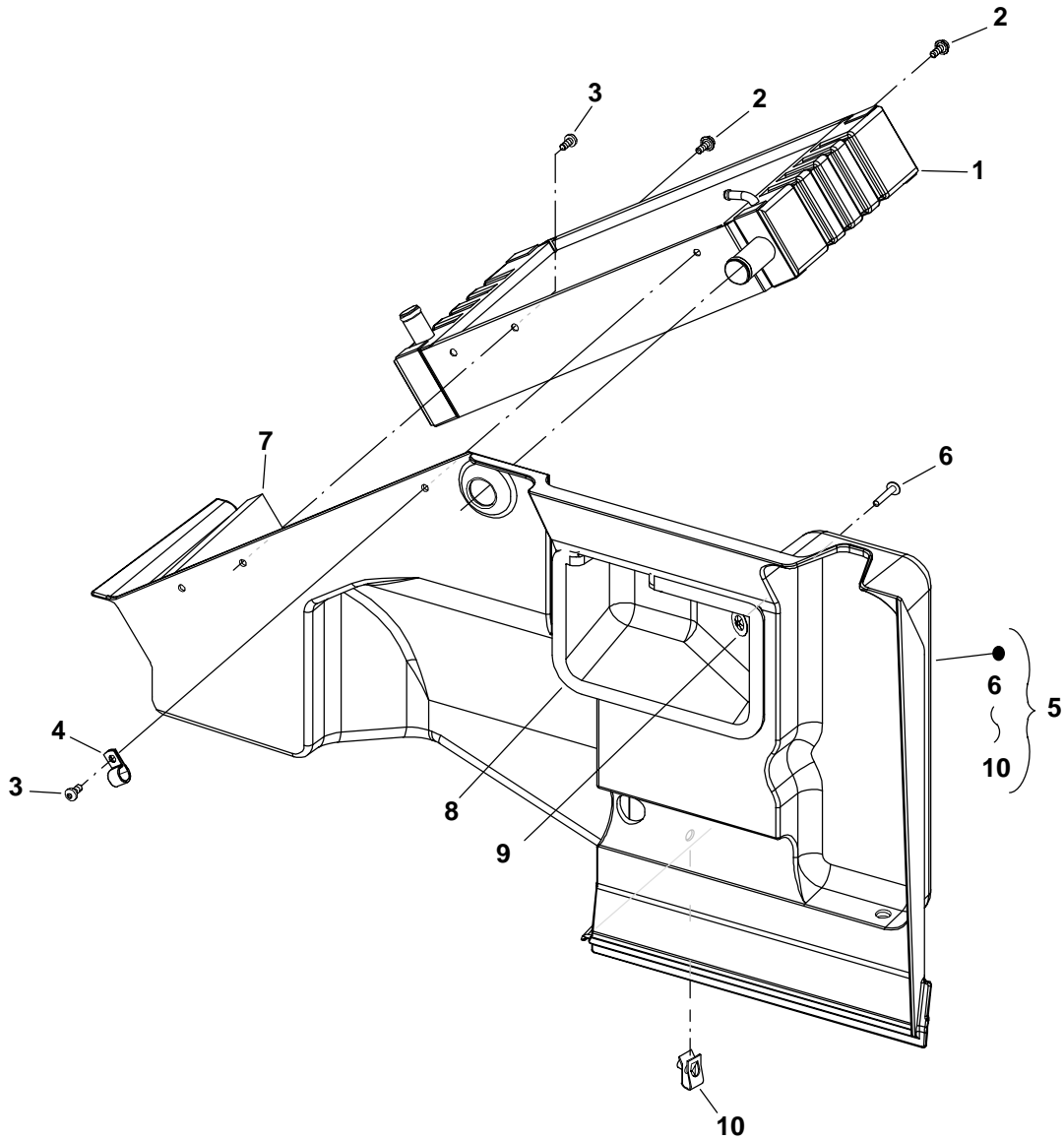
Cooling System



Cooling System

REF NO.	PART NO.	QTY USED	PART DESCRIPTION	REF NO.	PART NO.	QTY USED	PART DESCRIPTION
1	130-4322	1	Tank, Coolant Recovery	12	503-1959	1	Hose, Air Bleed
2	130-4450-02	1	Cap, Coolant Recovery Tank	13	503-1954	1	Hose, Lower Radiator
3	509-0329	1	O'Ring	14	130-4391	1	Fitting, "T" Hose
4	821-2096-02	3	Screw, Lock Flange (M6 x 1 x 12mm)	15	821-2035	1	Screw, Lock Flange (M6 x 1 x 25mm)
5	130-4320	1	Cap, Coolant Fill	16	130-4392	1	Cap, Drain
6	130-4321	1	Neck, Fill	17	130-4462	1	Seal, Coolant Hose
7	503-1137	8	Clamp, Hose	18	503-1970-02	1	Clamp, Hose Bracket
8	502-0395	1	Barb, Hose	19	870-2054	1	Nut, Lock Flange (M6 x 1)
9	503-1922	1	Hose, Fill Neck	20	503-1921	1	Hose, Lower Engine
10	503-1923	1	Hose, Overflow	21	503-1920	1	Hose, Upper Radiator
11	503-0170	4	Clamp, Hose				

Radiator Mount

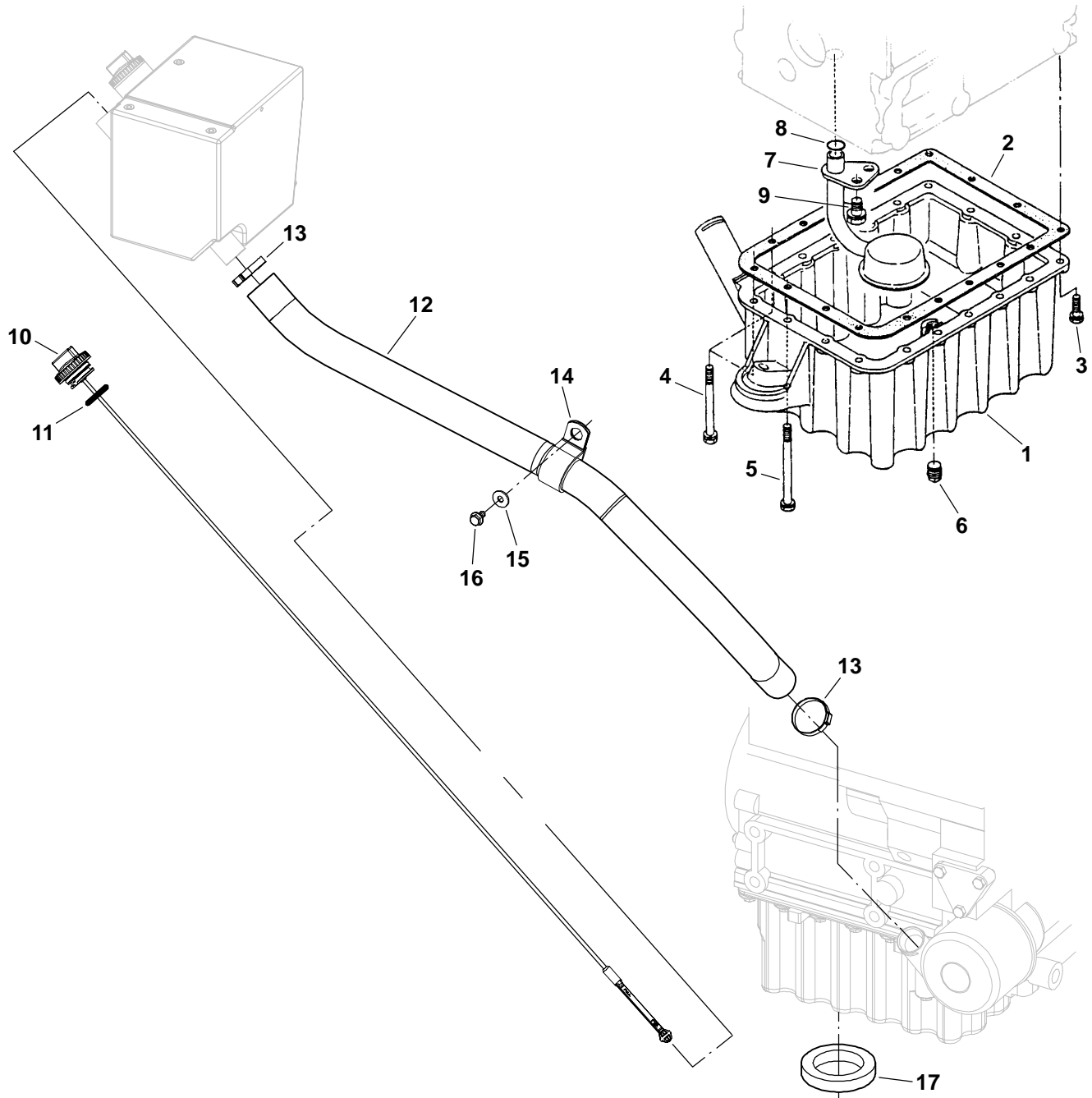


REF NO.	PART NO.	QTY USED	PART DESCRIPTION
1	130-4471	1	Radiator
2	821-2096-03	2	Screw, Lock Flange (M6 x 1 x 16mm)
3	823-0003-02	2	Screw, Pan Head (M6 x 1 x 14mm)
4	332-1553	1	Clamp, Loop
5	405-5086	1	Wall Assy, Back (Includes Parts Marked *)

REF NO.	PART NO.	QTY USED	PART DESCRIPTION
6	818-0226-01	2	*Rivet
7	130-4689	1	*Seal, Radiator Spacer
8	405-5308	1	*Insulation, Exhaust Baffle
9	518-0581	2	*Nut, Push-On
10	870-0542	1	*Nut, Self Retaining

* – Parts Included in Back Wall Assy.

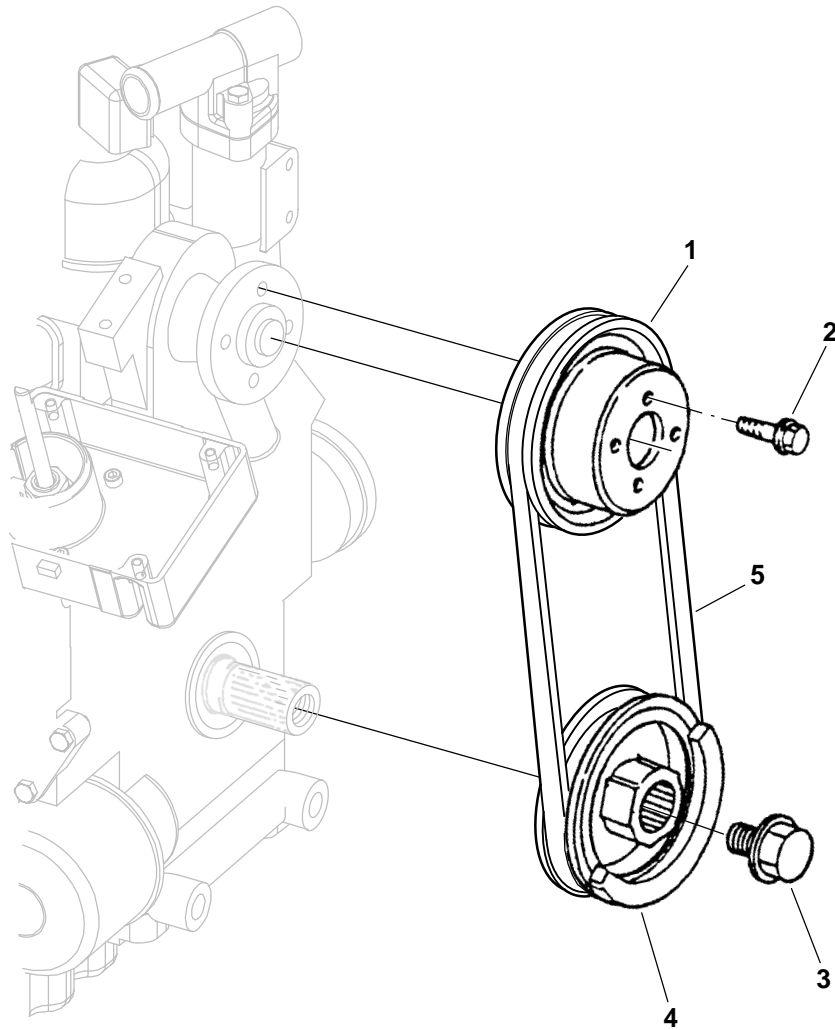
Oil Pan



REF NO.	PART NO.	QTY USED	PART DESCRIPTION
1	185-6846	1	Pan, Oil
2	185-6818	1	Gasket, Oil Pan
3	185-2389	15	Bolt
4	185-2396	2	Bolt
5	185-2398	1	Bolt
6	185-7068	1	Plug
7	185-5496	1	Tube, Oil Pickup
8	185-3078	1	O'Ring
9	185-6956	1	Bolt
10	123-2051	1	Indicator, Oil Level (Includes O'Ring)

REF NO.	PART NO.	QTY USED	PART DESCRIPTION
11	509-0329	1	O'Ring
12	123-2120	1	Hose, Oil Fill
13	503-1137	2	Clamp, Hose
14	332-2898	1	Clamp, Loop
15	526-2083	1	Washer, Flat (M6)
16	821-2032	1	Screw, Lock Flange (M6 x 1 x 12mm)
17	403-3859	1	Seal, Oil Drain

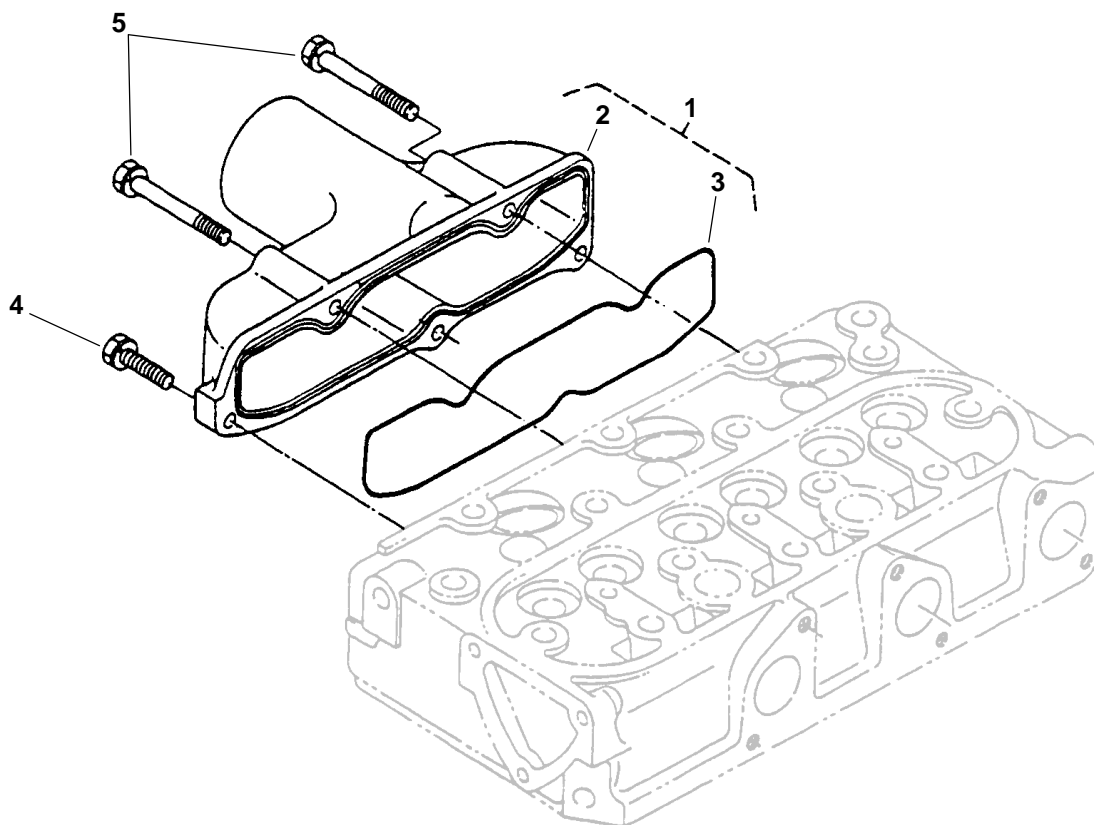
Pulley



REF NO.	PART NO.	QTY USED	PART DESCRIPTION
1	185-5707	1	Pulley, Fan
2	185-2572	4	Screw, Hex Head Flange
3	185-5709	1	Screw, Hex Head Cap

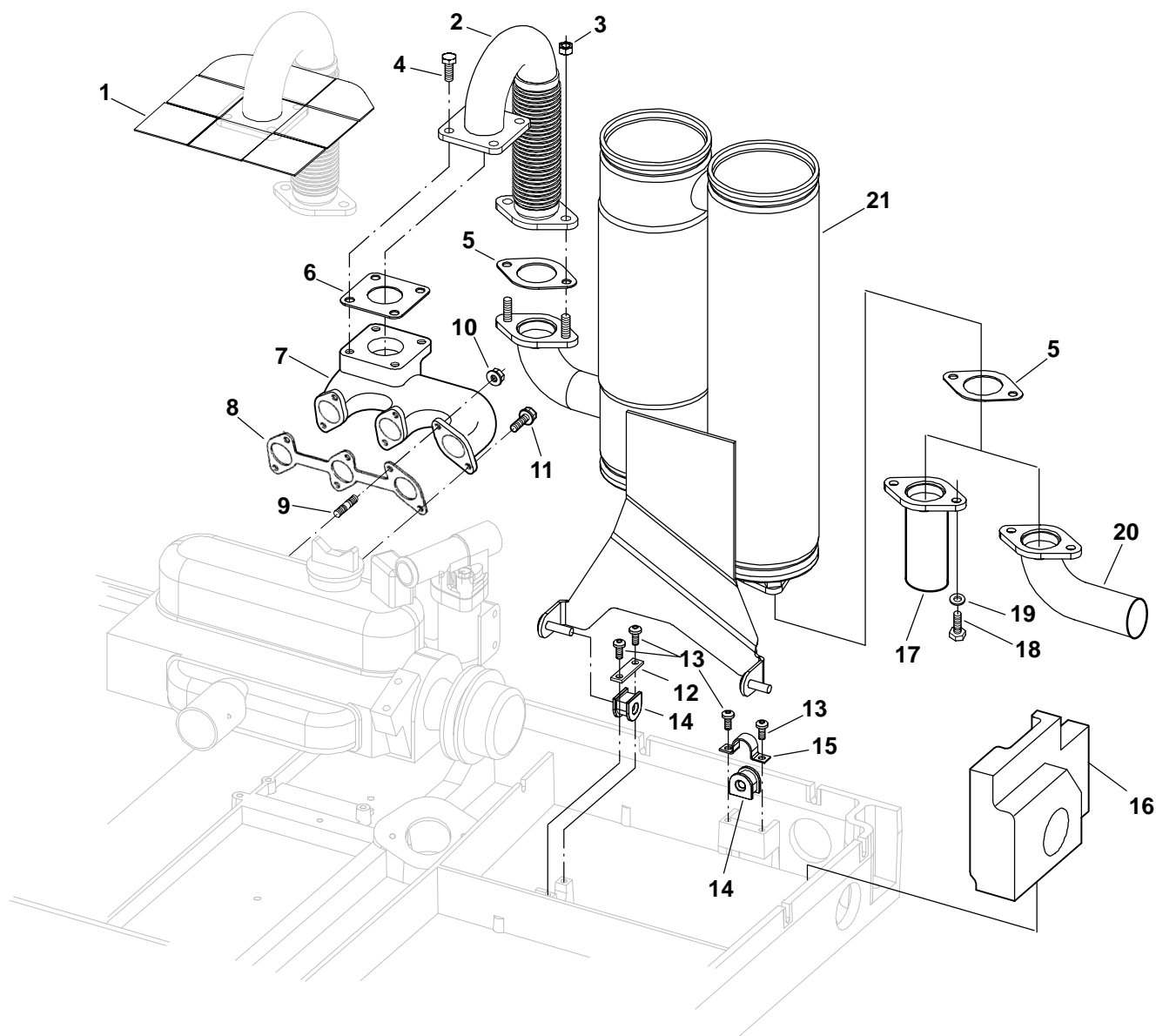
REF NO.	PART NO.	QTY USED	PART DESCRIPTION
4	185-7083	1	Pulley, Drive
5	511-0187	1	Belt, Fan

Inlet Manifold



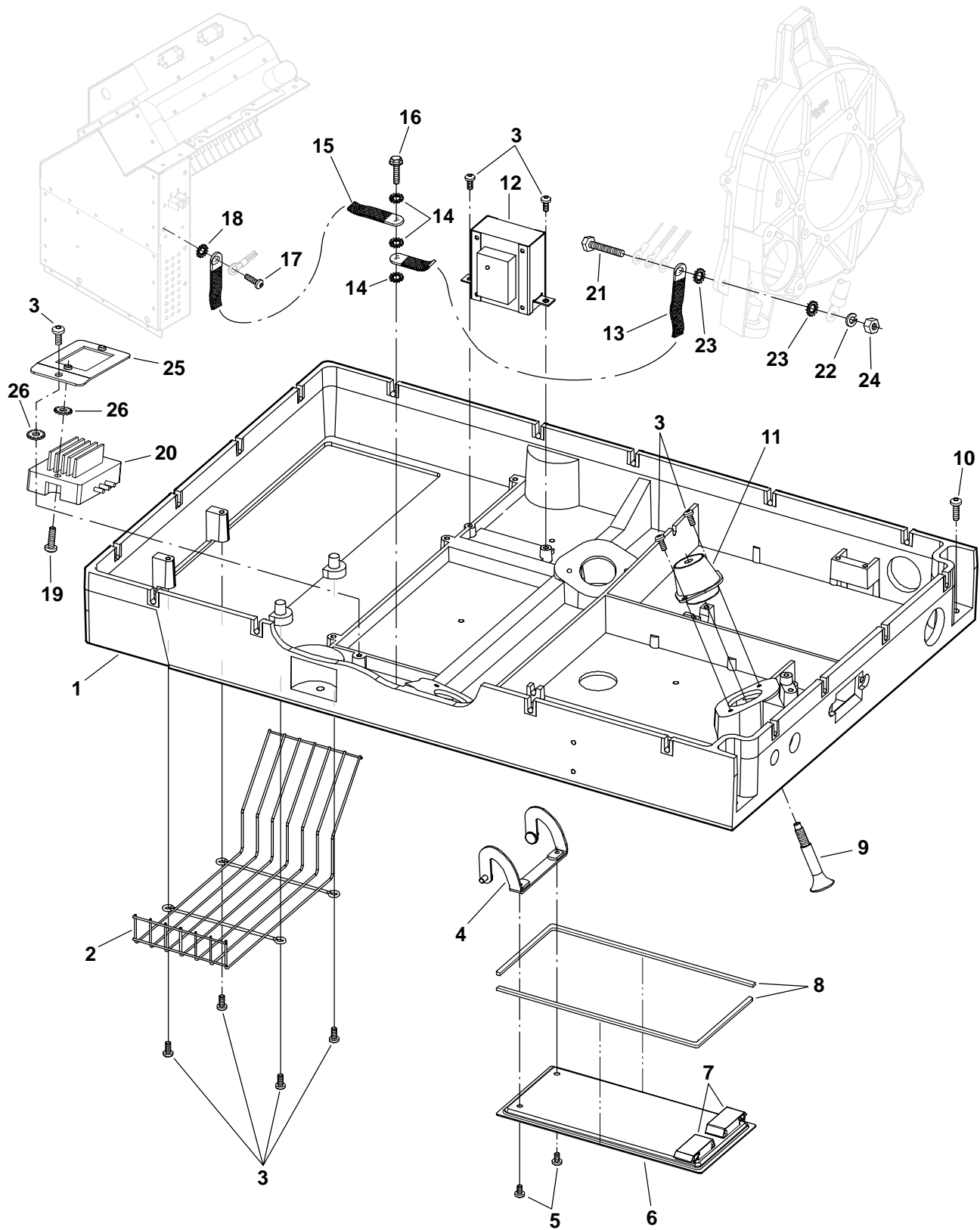
REF NO.	PART NO.	QTY USED	PART DESCRIPTION	REF NO.	PART NO.	QTY USED	PART DESCRIPTION
1	185-7087	1	Manifold Assy, Inlet (Includes Manifold and Gasket)	3	185-5832	1	Gasket, Manifold
2	185-5831	1	Manifold, Inlet	4	185-2389	2	Bolt
				5	185-5833	3	Bolt

Exhaust System



REF NO.	PART NO.	QTY USED	PART DESCRIPTION	REF NO.	PART NO.	QTY USED	PART DESCRIPTION
1	405-5755	AR	Seal, Exhaust Pipe	13	823-0003-02	6	Screw, Pan Head (M6 x 1 x 14mm)
2	154-3018	1	Pipe, Exhaust Flex	14	402-0687-01	3	Isolator, Muffler
3	860-2008	2	Nut, Hex (M8 x 1-1/4)	15	402-0695-02	1	Clamp, "U" Isolator
4	725-1050	4	Screw, Hex Head Cap (M8 x 20mm)	16	405-5787	1	Block, Fiberglass
5	154-2800	2	Gasket, Exhaust Manifold	17	155-2610	1	Tube, Exhaust 3"
6	185-6853	1	Gasket, Muffler		155-2424	1	7"
7	185-6791	1	Manifold, Exhaust	18	800-0730	2	Screw, Hex Head Thread Form (5/16-18 x 1)
8	185-6852	1	Gasket	19	526-0115	2	Washer, Flat (5/16")
9	185-5829	3	Stud	20	155-2982	1	Elbow, Exhaust
10	185-5536	3	Nut	21	155-3110	1	Muffler, Exhaust
11	185-5534	3	Bolt				
12	402-0688-02	2	Clamp, Flat Isolator				

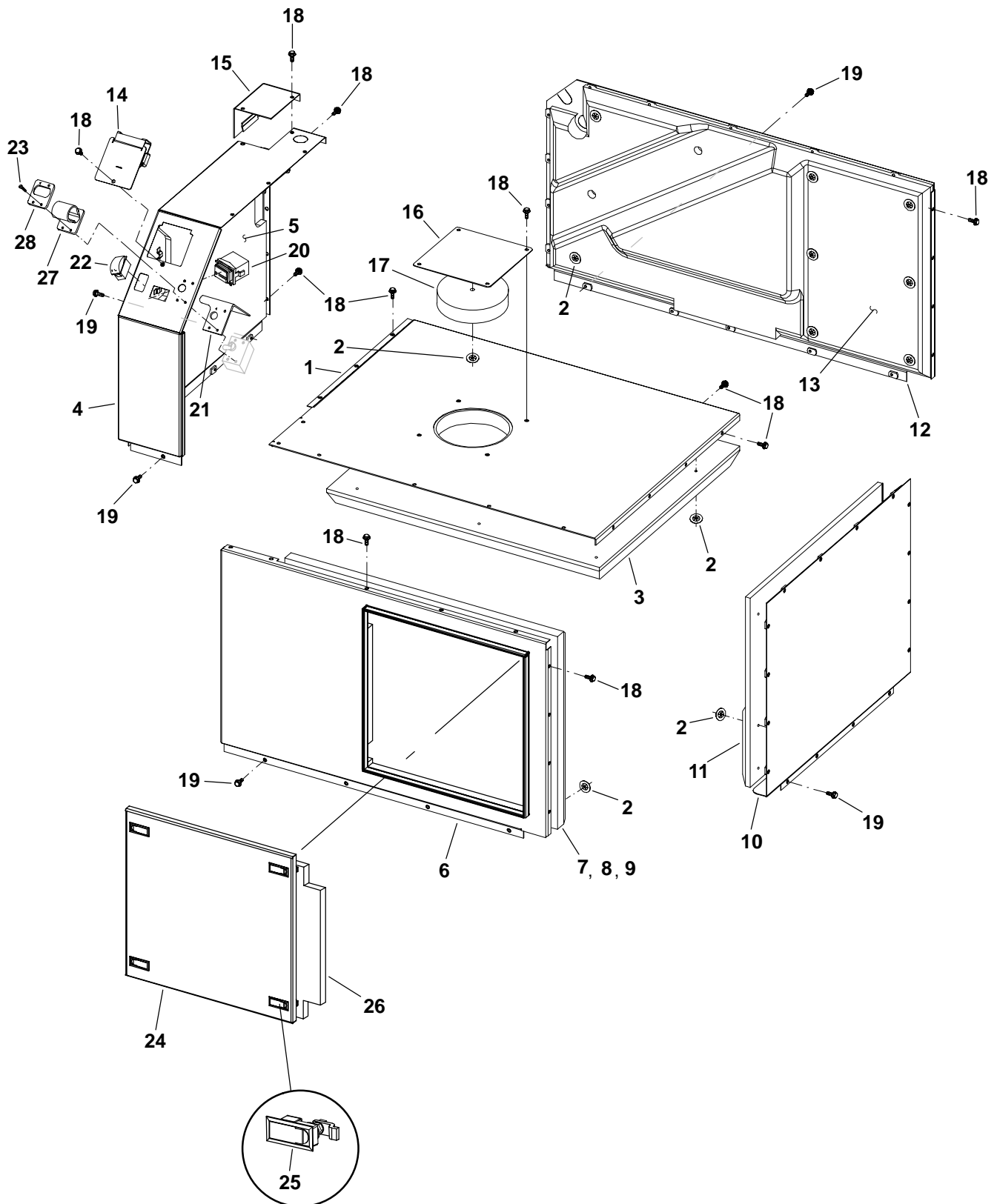
Mounting Base



Mounting Base

REF NO.	PART NO.	QTY USED	PART DESCRIPTION	REF NO.	PART NO.	QTY USED	PART DESCRIPTION
1	403-3847-04	1	Base, Mounting	17	823-1002-04	1	Screw, Pan Head Machine (M6 x 1 x 14mm)
2	130-4655	1	Guard, Fan	18	856-0006	1	Washer, EIT Lock (1/4")
3	823-0003-02	13	Screw, Pan Head (M6 x 1 x 14mm)	19	823-0003-03	2	Screw, Pan Head (M6 x 1 x 20mm)
4	402-0673-02	1	Hinge, Door	20	191-2228	1	Regulator (For Use With Battery Charging Option)
5	823-1002-03	2	Screw, Pan Head (M6 x 1 x 10mm)	21	800-0030-01	1	*Screw, Hex Head Cap (5/16-18 x 1-1/4))
6	405-5818	1	Door Assy, Maintenance (Includes Latch and Seal)	22	850-0045	1	*Washer, Lock (.312)
7	406-0612	2	Latch, Service Panel	23	856-0008	2	*Washer, EIT Lock (.312)
8	403-3861	2	Seal, Door	24	862-0015	1	*Nut, Hex (5/16-18)
9	815-0861	3	Screw, Isolator Mount	25	305-0952-02	1	Bracket, Voltage Regulator (For Use With Battery Charging Option)
10	815-0908	4	Screw, Thread Forming Hex Washer Head Mounting (3/8-16 x 1.5)	26	856-0006	3	Washer, EIT Lock (1/4")
11	402-0680-01	3	Isolator, Vibration	* - Parts Included with Engine Harness Listed on Engine Harness Page.			
12	315-0793	1	Transformer, Battery Charge (For Use With BatteryCharging Option)				
13	337-2845	1	Strap, Bond				
14	856-0008	3	Washer, EIT Lock (5/16")				
15	337-2953	1	Strap, Bond				
16	815-0829-05	1	Screw, Hex Washer Head Thread Forming (M8 x 1.25 x 25mm)				

Housing



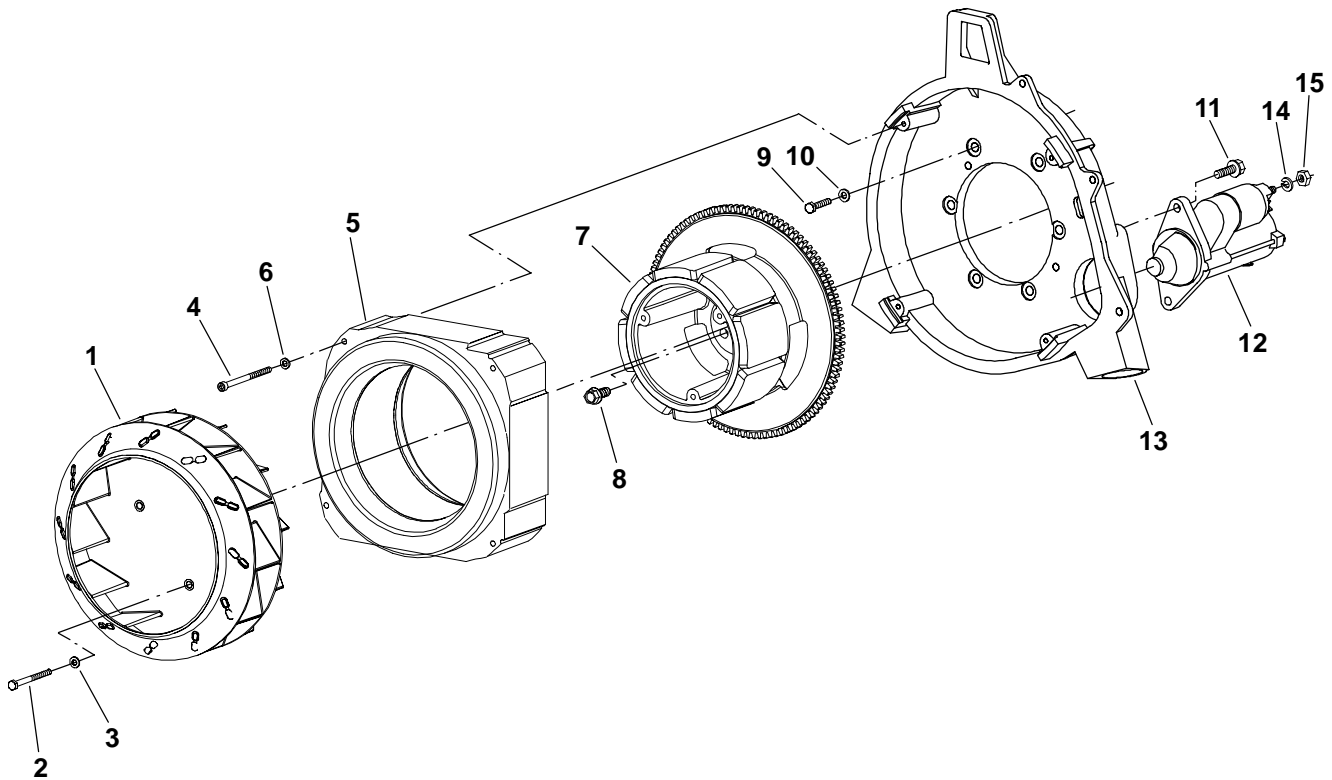
Housing

REF NO.	PART NO.	QTY USED	PART DESCRIPTION	REF NO.	PART NO.	QTY USED	PART DESCRIPTION
1			Panel Assy, Top (Includes Insulation & 7 Push-On Nuts)	11	405-5081	1	Insulation, Engine Panel
	405-5066-01	1	Onan (Medium) Green	12			Panel Assy, Rail (Includes Insulation & 8 Push-On Nuts)
	405-5066-02	1	Premium (Dark) Green		405-5083-01	1	Onan (Medium) Green
2	518-0581	30	Nut, Push-On		405-5083-02	1	Premium (Dark) Green
3	405-5762	1	Insulation, Top Panel	13	405-5779	1	Insulation, Panel Rail
4			Panel Assy, Cap (Includes Insulation)	14	405-5309-03	1	Cover, Radiator Fill Access
			HDKAJ, HDKAK	15	405-5380-05	1	Cover, AC Access
			Spec A-E	16			Cover Assy, Lifting Eye Access (Includes Insulation and One Push-On Nut)
	405-5071-02	1	W/O Meter		405-5575-01	1	Onan (Medium) Green
	405-5071-03	1	W/Meter		405-5575-02	1	Premium (Dark) Green
			Begin Spec F	17	405-5546	1	Insulation, Access Cover
	405-6037-02	1	W/O Meter	18	821-2096-02	34	Screw, Lock Flange (M6 x 1 x 12mm)
	405-6037-03	1	W/Meter				Screw, Lock Flange (M6 x 1 x 16mm)
			HDKAT	19	821-2096-03	18	Hourmeter
	405-5071-03	1	Spec A				Guard, Circuit Breaker
	405-6037-03	1	Begin Spec B	20	302-2002	1	Switch, Rocker (Start/Stop) (S1)
5	405-5757	1	Insulation, Cap	21	320-1939-02	1	Screw, Pan Head
			HDKAJ, HDKAK	22	308-1038	1	W/O Circuit Breaker Boot (6-32 x 1/4")
	405-5757	1	Spec A-C	23			W/Circuit Breaker Boot (6-32 x 3/8")
	405-5875	1	Begin Spec D		815-0549-01	4	Door, Service
	405-5875	1	HDKAT				Latch, Lift and Turn
6			Panel Assy, Curb		815-0550-02	4	Insulation, Curb Panel
	405-5077-01	1	Onan (Medium) Green (Includes Part Marked * and 8 Push-On Nuts)	24	405-5823-02	1	Boot, Circuit Breaker
			Premium (Dark) Green (Includes Parts Marked °)	25	406-0842	4	Clamp, Circuit Breaker Boot
	405-5824-02	1		26	405-5822-02	1	
7	405-5759	1	*Insulation, Panel Curb	27	320-1965	1	
8	508-1118	1	°Edging, Trim (14-3/4")	28	320-1966-02	1	
9	405-5822-01	1	°Insulation, Curb Panel				
10			Panel Assy, Engine (Includes Insulation and 6 Push-On Nuts)				
	405-5080-01	1	Onan (Medium) Green				
	405-5080-02	1	Premium (Dark) Green				

* – Part Included in Onan (Medium) Green Curb Panel Assy.

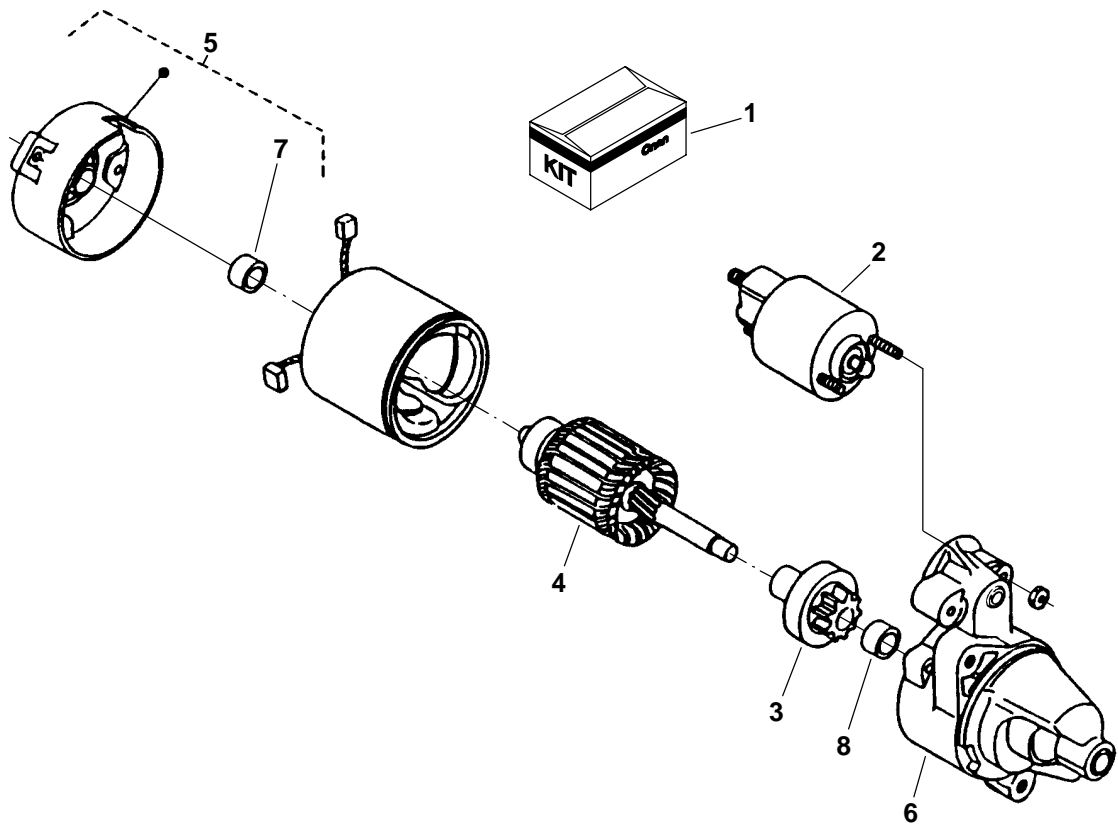
° – Parts Included in Premium (Dark) Green Curb Panel Assy.

Generator



REF NO.	PART NO.	QTY USED	PART DESCRIPTION	REF NO.	PART NO.	QTY USED	PART DESCRIPTION
1	205-0232	1	Fan, Generator	9	800-2058	6	Screw, Hex Head Cap (M8 X 1.25 X 25mm)
2	800-2044	3	Screw, Hex Head Cap (M6 x 1 x 70mm)	10	526-2100	6	Washer, Flat (M8)
3	526-2080	3	Washer, Flat (M6)	11	815-0781	2	Screw, Hex Washer Head (M8 x 1.25 x 30mm)
4	815-0876	4	Screw, Socket Head Cap (M6 x 1 x 100mm)	12	191-2200	1	Starter (See Separate Page for Components)
5	220-4484-01	1	Stator	13	104-1890	1	Housing, Flywheel
6	740-1004	4	Washer, Flat (M6)	14	850-2008	1	Washer, Lock (M8)
7	201-3540	1	Rotor Assy (Includes Ring Gear)	15	860-2008	1	Nut, Hex (M8 x 1.25)
8	185-5587	5	Screw, Hex Head Cap				

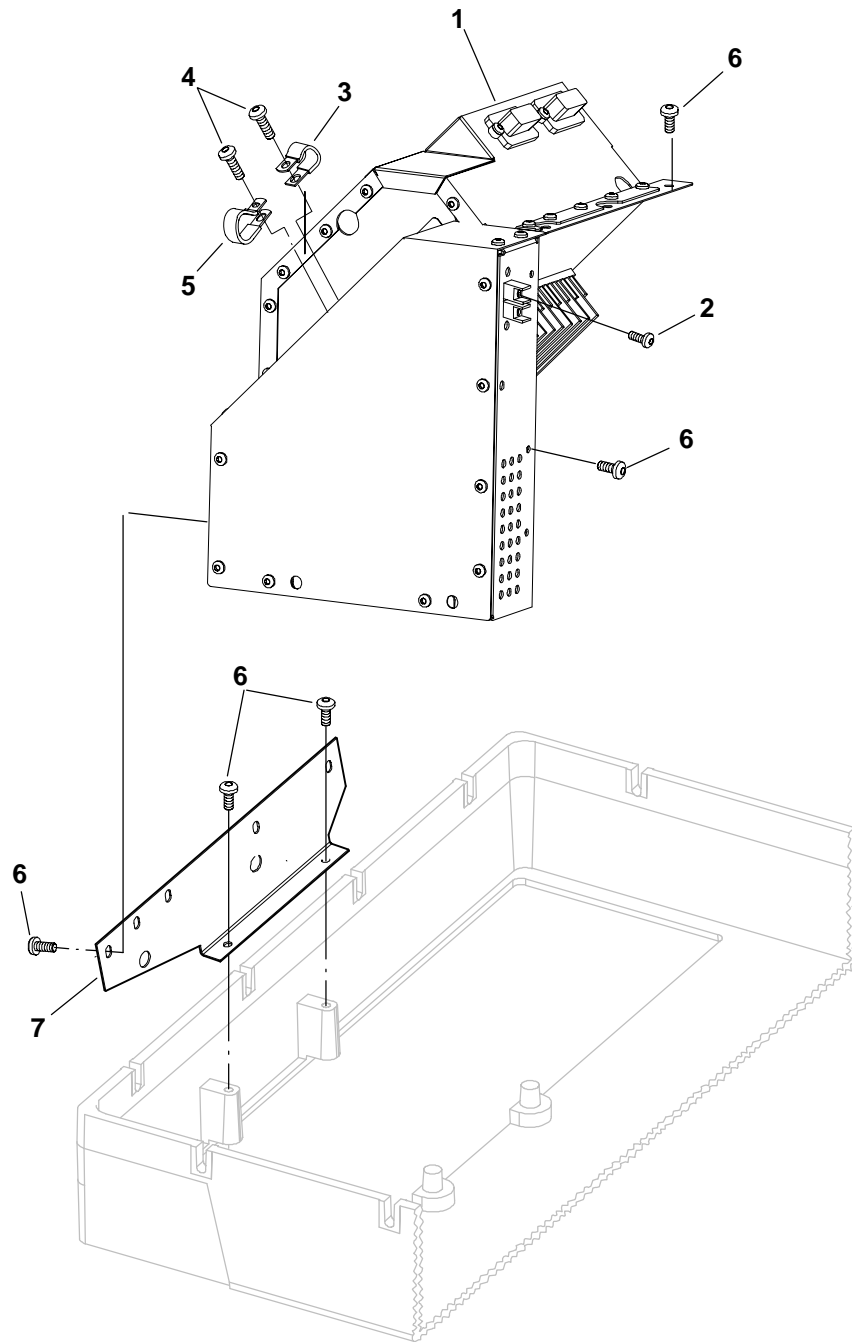
Starter Components



REF NO.	PART NO.	QTY USED	PART DESCRIPTION
	191-2200	1	Starter
1	191-2215	1	Kit, Starter Brush
2	191-2216	1	Switch
3	191-2217	1	Clutch
4	191-2218	1	Armature

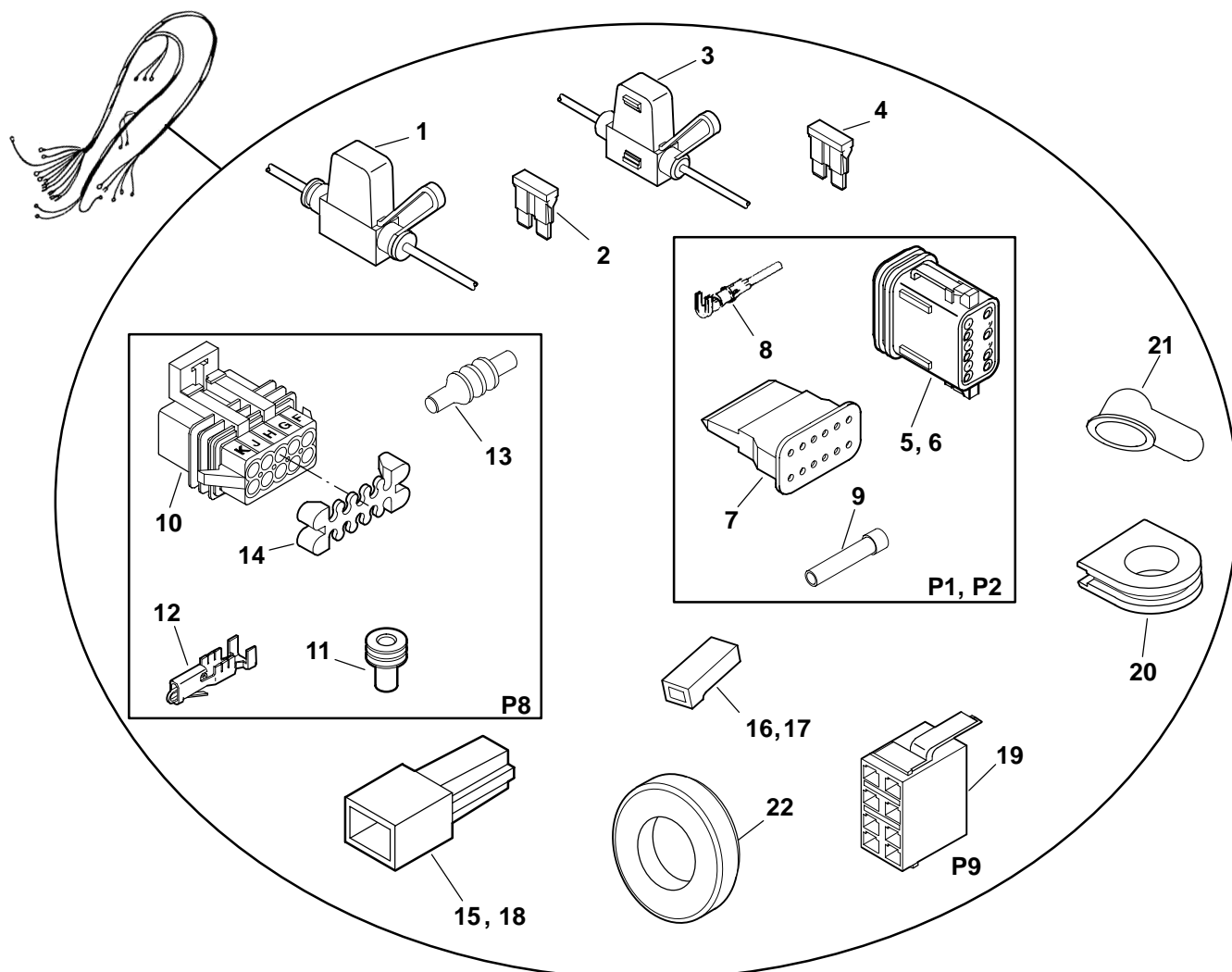
REF NO.	PART NO.	QTY USED	PART DESCRIPTION
5	191-2219	1	Frame, Commutator End
6	191-2220	1	Housing
7	191-2221	1	Bearing, Commutator End
8	191-2222	1	Bearing, Pinion End

Inverter Mount



REF NO.	PART NO.	QTY USED	PART DESCRIPTION	REF NO.	PART NO.	QTY USED	PART DESCRIPTION
1	300-4800-96	1	Inverter (HDKAJ Spec A-E, HDKAK Spec A-E, HDKAT Spec A)	3	518-0533	1	Clip, Loop
	300-5295	1	Inverter (HDKAJ Begin Spec F, HDKAK Begin Spec F, HDKAT Begin Spec B)	4	823-1002-04	2	Screw, Pan Head Machine (M6 x 1 x 14mm)
				5	332-1553	1	Clamp, Loop (1")
				6	823-0003-02	11	Screw, Pan Head (M6 x 1 x 14mm)
2	815-0896-03	2	Screw, Pan Head Torx (8-32 x 3/8")	7	319-3033-02	1	Bracket, Inverter

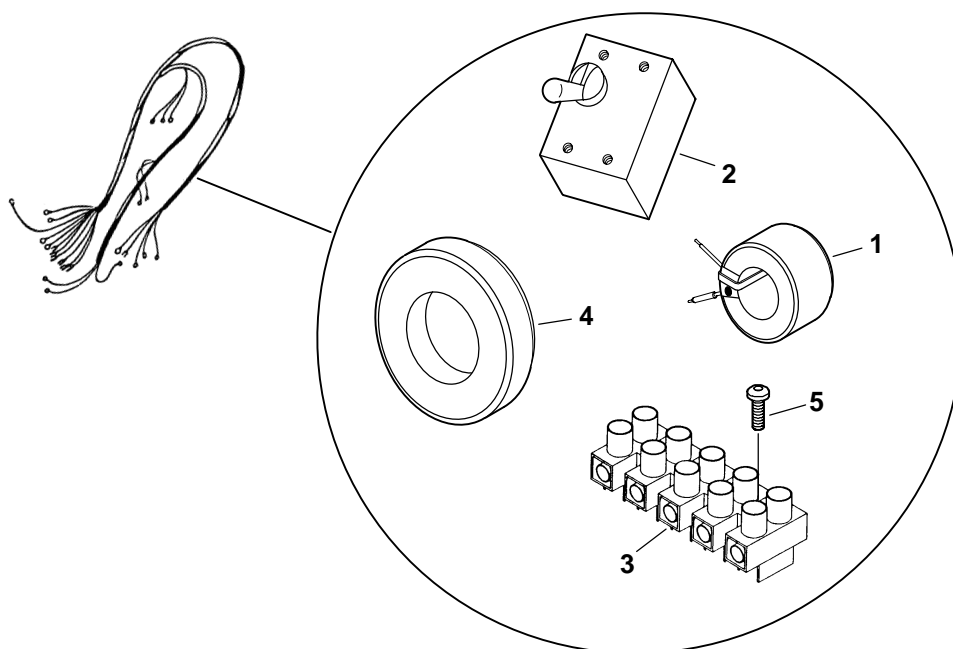
Engine Harness



REF NO.	PART NO.	QTY USED	PART DESCRIPTION	REF NO.	PART NO.	QTY USED	PART DESCRIPTION
			*Harness, Engine	15	332-2298	1	Housing, Tab Terminal (A1-J6)
			HDKAJ, HDKAK	16	332-0819	1	Housing, Receptacle Terminal (Natural) (A1-J7)
	338-3416	1	Spec A-E	17	332-0819-02	1	Housing, Receptacle Terminal (Red) (A1-J5)
	338-3822	1	Begin Spec F	18	332-2298-01	1	Housing, Tab Terminal (Black) (A1-J8)
			HDKAT	19	308-1019	1	Connector, Switch (P9)
	338-3416	1	Spec A	20	508-1105	1	Grommet
	338-3822	1	Begin Spec B	21	332-2112	1	Insulator, Terminal
1	321-0322	2	Holder, Fuse (1-1/2") (F1, F2)	22			Core
2	321-0321-07	2	Fuse, Blue Blade (F1, F2) (15A)				HDKAJ, HDKAK
3	321-0349	1	Holder, Fuse (1") (F3)		315-0770	4	Spec A-E (Ferrite)
4	321-0307-08	1	Fuse, Natural Blade (F3) (25A)		315-0821	1	Begin Spec F (Tape Wound)
5	323-1582	1	Connector, Plug (12 Pin) (P1)		315-0821	1	HDKAT (Tape Wound)
6	323-1582-02	1	Connector, Plug (12 Pin) (P2)				
7	323-1583	2	Wedge, Plug (12 Pin) (P1, P2)				
8	323-1492	20	Terminal, Socket (P1, P2)				
9	323-1591	4	Seal, Plug (P1, P2)				
10	323-1711	1	Connector, Plug (10 Pin) (P8)				
11	323-1708	9	Seal, Cable (P8)				
12	323-1709	9	Terminal, Socket (P8)				
13	323-1712	1	Plug, Cavity (P8)				
14	323-1719	1	Lock, Housing (P8)				

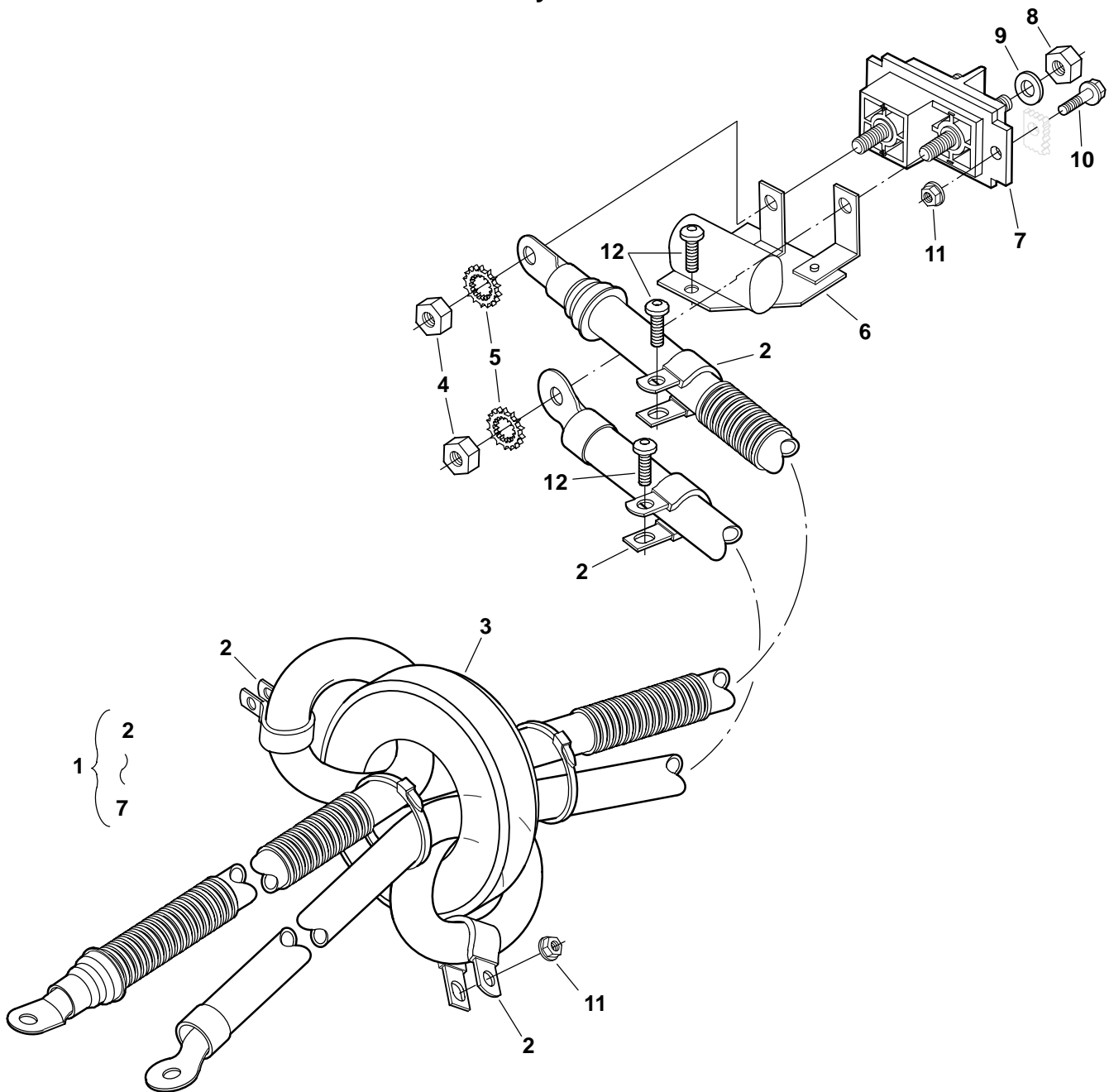
* - See Also the Mounting Base Page for Hardware Included with this Harness.

AC Harness



REF NO.	PART NO.	QTY USED	PART DESCRIPTION	REF NO.	PART NO.	QTY USED	PART DESCRIPTION
			Harness, AC Wiring	2			Breaker, Circuit
			HDKAJ, HDKAK	320-1875-01	1		35A (All Specs Except 11502)
			Spec A-C	320-1875-04	1		30A (Spec 11502 Only)
338-3418	1		W/Battery Charger	3			Block, AC Terminal
			W/O Battery Charger				HDKAJ, HDKAK
338-3417	1		All Specs Except	332-3384	1		Spec A-C
			11502	332-3531-04	1		Begin Spec D
338-3417-03	1		Spec 11502 Only	332-3531-04	1		HDKAT
			Spec D-E	4			Core, Ferrite
338-3588-01	1		W/Battery Charger				HDKAJ, HDKAK
			W/O Battery Charger	315-0770	4		Spec A-E
338-3587-01	1		All Specs Except	315-0821	1		Begin Spec F
			11502				HDKAT
338-3587-04	1		Spec 11502 Only	315-0770	4		Spec A
			Begin Spec F	315-0821	1		Begin Spec B
338-3823-01	1		W/Battery Charger	5			Screw
			W/O Battery Charger				HDKAJ, HDKAK
338-3824-01	1		All Specs Except	823-0002-08	2		Spec A-C, Pan Head Torx
			11502				(M4 x .7 x 25mm)
338-3824-04	1		Spec 11502 Only	812-0070	2		Begin Spec D, Round
			HDKAT				Head Machine
338-3588-01	1		Spec A				(6-32 x 1-1/4")
338-3823-01	1		Begin Spec B	812-0070	2		HDKAT, Round Head
1 315-0760	1		Transformer				Machine (6-32 x 1-1/4")

Battery Harness

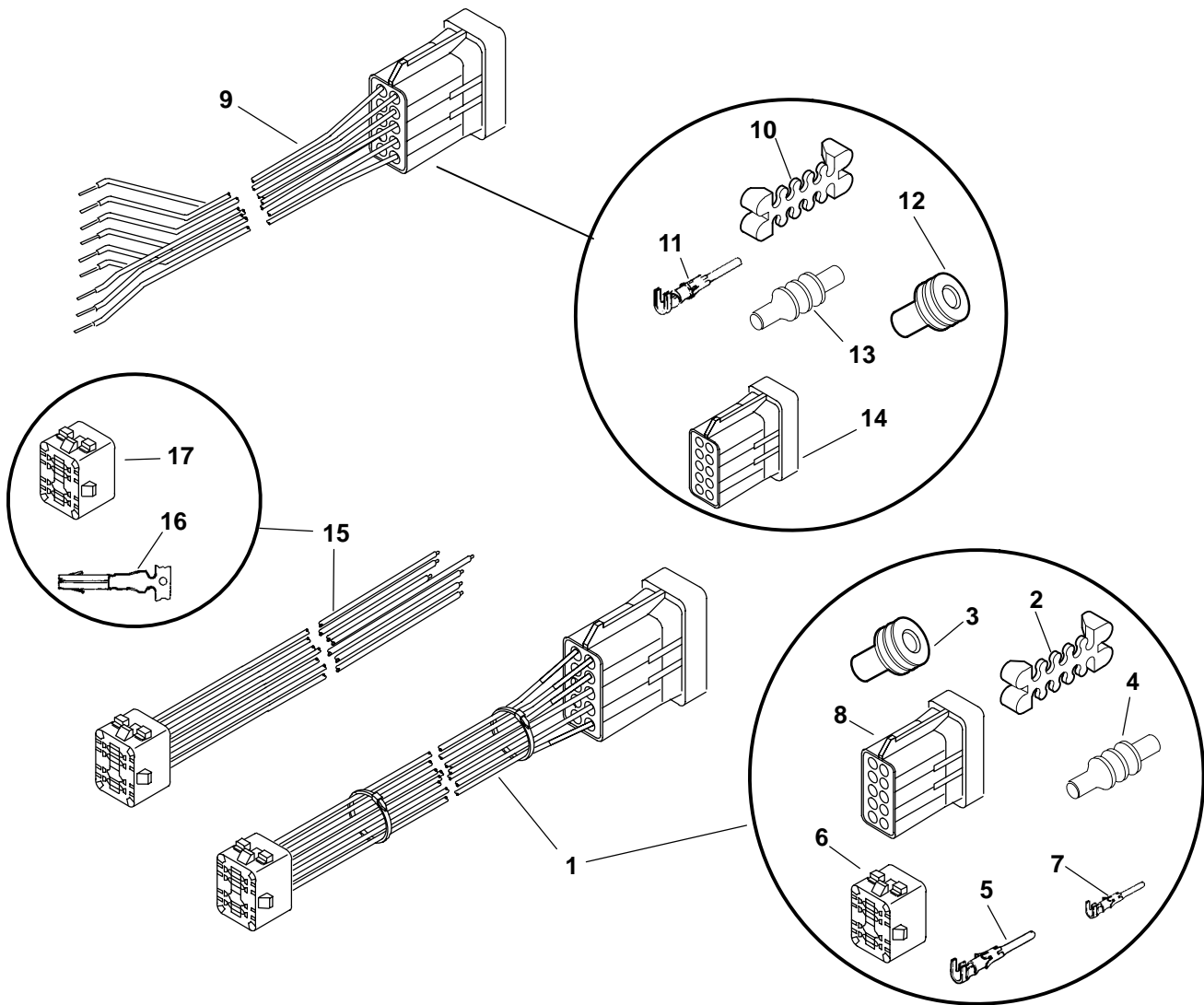


REF NO.	PART NO.	QTY USED	PART DESCRIPTION
1			Harness, Battery (Includes Parts Marked *)
	338-3422	1	Spec A-E
	338-3841	1	Begin Spec F
	338-3422	1	Spec A
	338-3841	1	Begin Spec B
2	332-1554	4	*Clamp, Insulated Loop
3	315-0770	1	*Core, Ferrite (Not Included with HDKAJ, HDKAK Harness Beginning Spec F or HDKAT Harness Beginning Spec B)
4	862-0015	2	*Nut, Hex (.313-18)

REF NO.	PART NO.	QTY USED	PART DESCRIPTION
5	856-0008	2	*Washer, EIT Lock (5/16")
6	300-4884	1	*PCB Assy, Filter DC
7	332-3408	1	*Block, Terminal
8	871-0025	2	Nut, Hex Brass (5/16-18)
9	526-0054	2	Washer, Flat (5/16")
10	821-2096-03	2	Screw, Lock Flange (M6 x 1 x 20mm)
11	870-2054	2	Nut, Lock Flange (M6 x 1)
12	823-0003-02	3	Screw, Pan Head (M6 x 1 x 14mm)

* - Parts Included in Battery Harness.

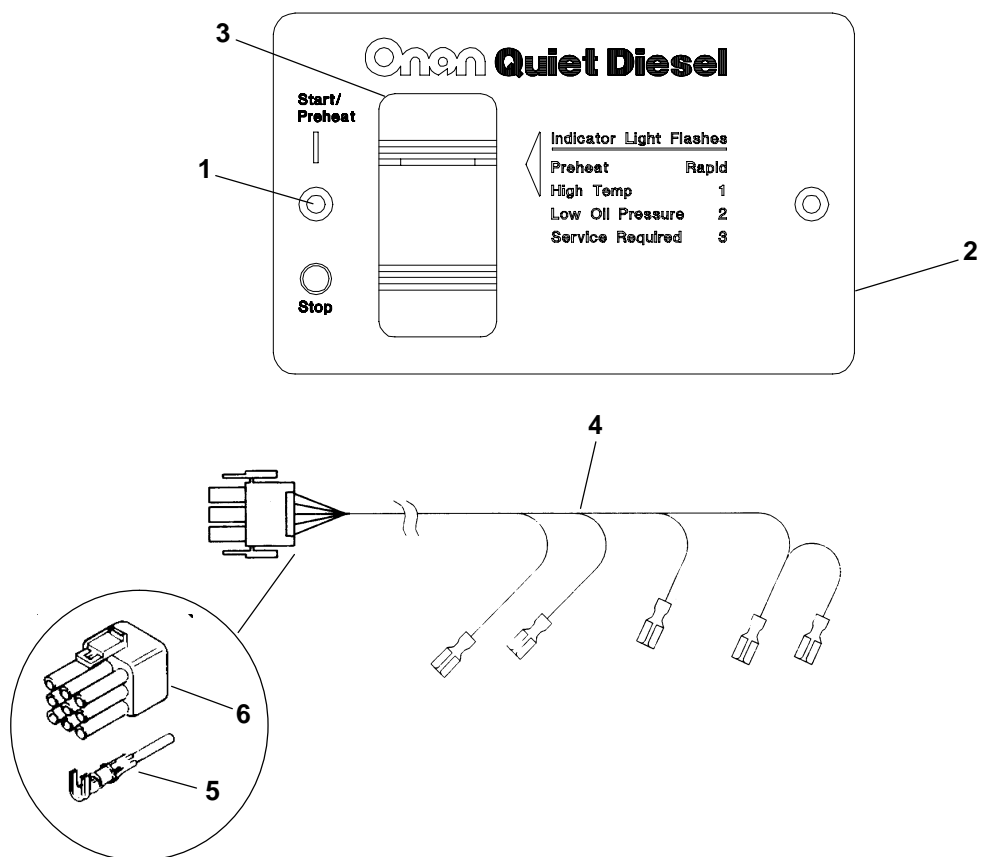
Harnesses



1		Harness, Extension (Reaches From DC Control Harness to Remote Panel) (Includes Parts Marked +)	10	323-1719	1	°Housing, Lock
338-3490-01	1	10 Feet	11	323-1707	8	°Pin, Contact
338-3490-02	1	30 Feet	12	323-1708	8	°Seal, Cable
2	323-1719	+Housing, Lock	13	323-1712	2	°Plug, Cavity
3	323-1708	+Seal, Cable	14	323-1710	1	°Connector, Receptacle (10 Pin)
4	323-1712	+Plug, Cavity	15	338-3573	1	Harness, Customer Interface Pigtail 6" (Reaches From Remote Panel to Customer Interface) (Includes Sockets and Cap)
5	323-1200	AR +Socket, Contact	16	323-1200	8	Socket, Contact
6	323-1325	+Cap, Connector	17	323-1325	1	Cap, Connector
7	323-1707	AR +Pin, Contact				
8	323-1710	+Connector, Receptacle (10 Pin)				
9	338-3272	1 Harness, Remote Connector (Customer Interface Pigtail 6") (Reaches From DC Control Harness to Customer Interface) (Includes Parts Marked °)				

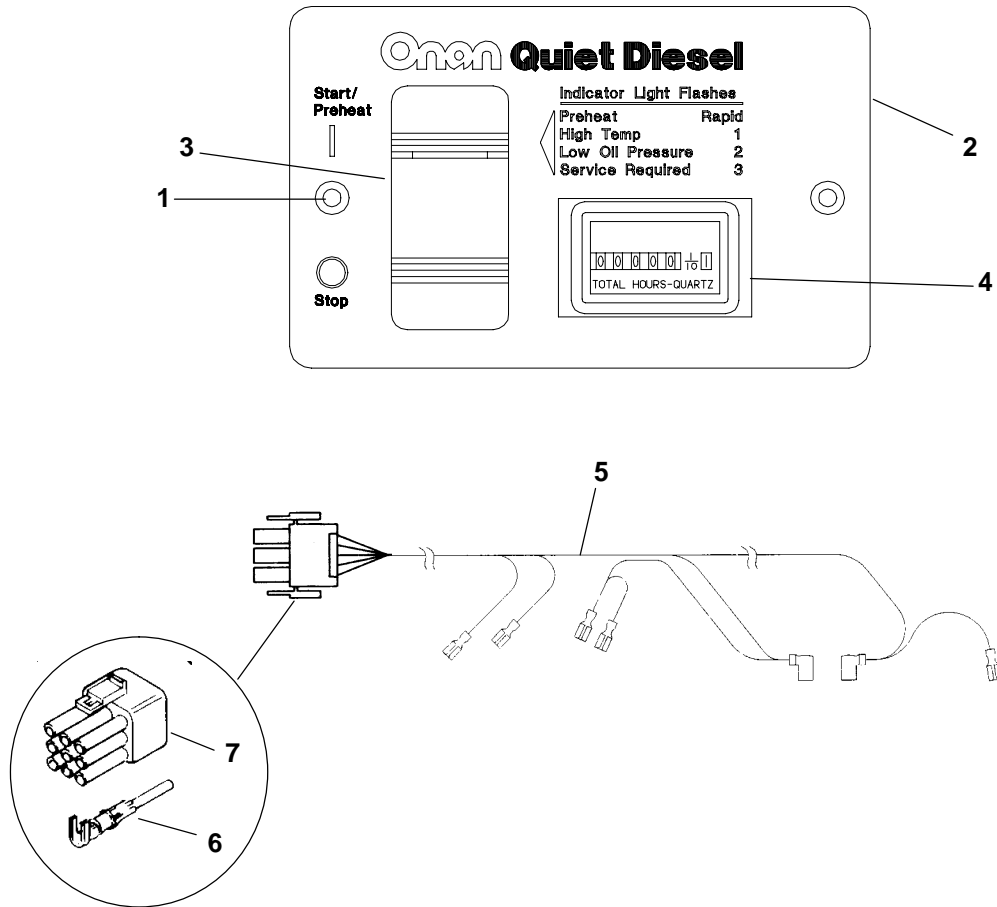
+ - Parts Included in Extension Harness.
 ° - Parts Included in Remote Connector Harness.

Remote Switch Panel



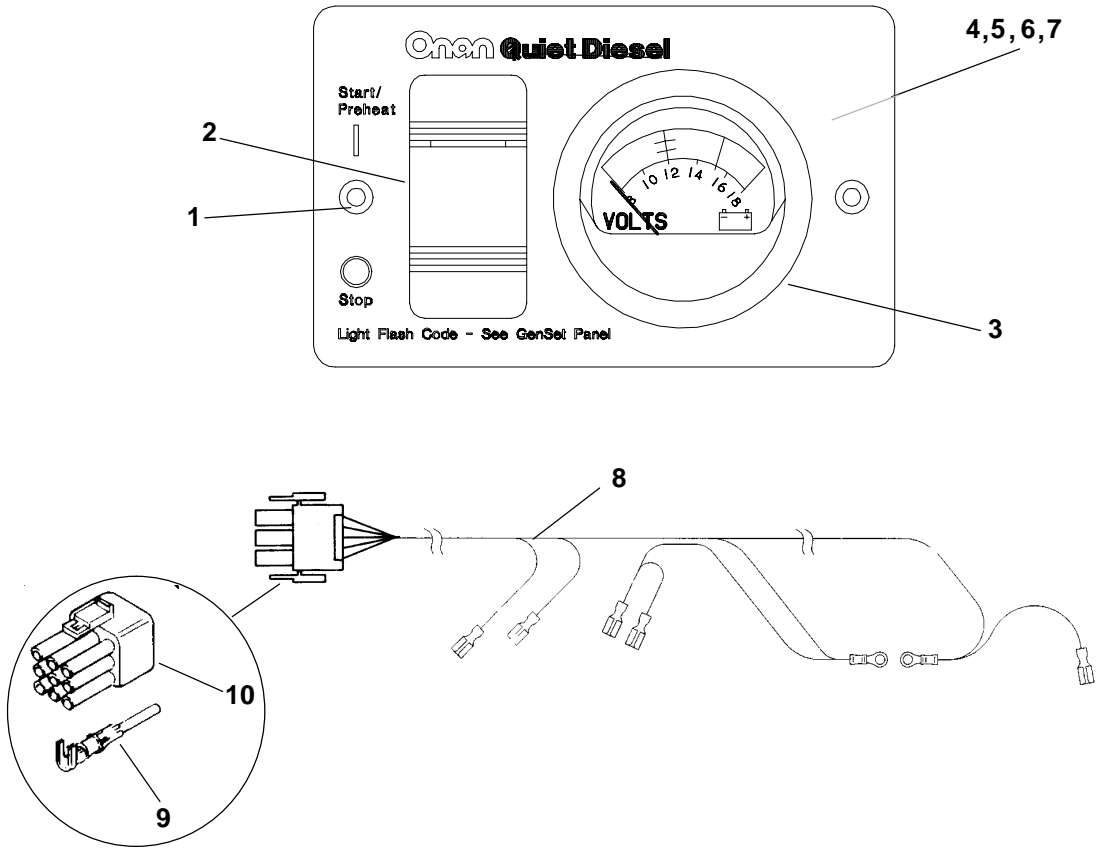
REF NO.	PART NO.	QTY USED	PART DESCRIPTION	REF NO.	PART NO.	QTY USED	PART DESCRIPTION
	300-4942	1	Kit, Remote Switch Panel	4	338-3512	1	Harness, Remote Panel (Includes Pins and Plug)
1	815-0910	2	Screw, Wood Mounting (#6 x 1)	5	323-1199	4	Pin, Contact
2	319-2340-01	1	Panel, Printed	6	323-1291	1	Plug (9 Pin)
3	308-1062	1	Switch, Rocker				

Remote Switch/Hourmeter Panel



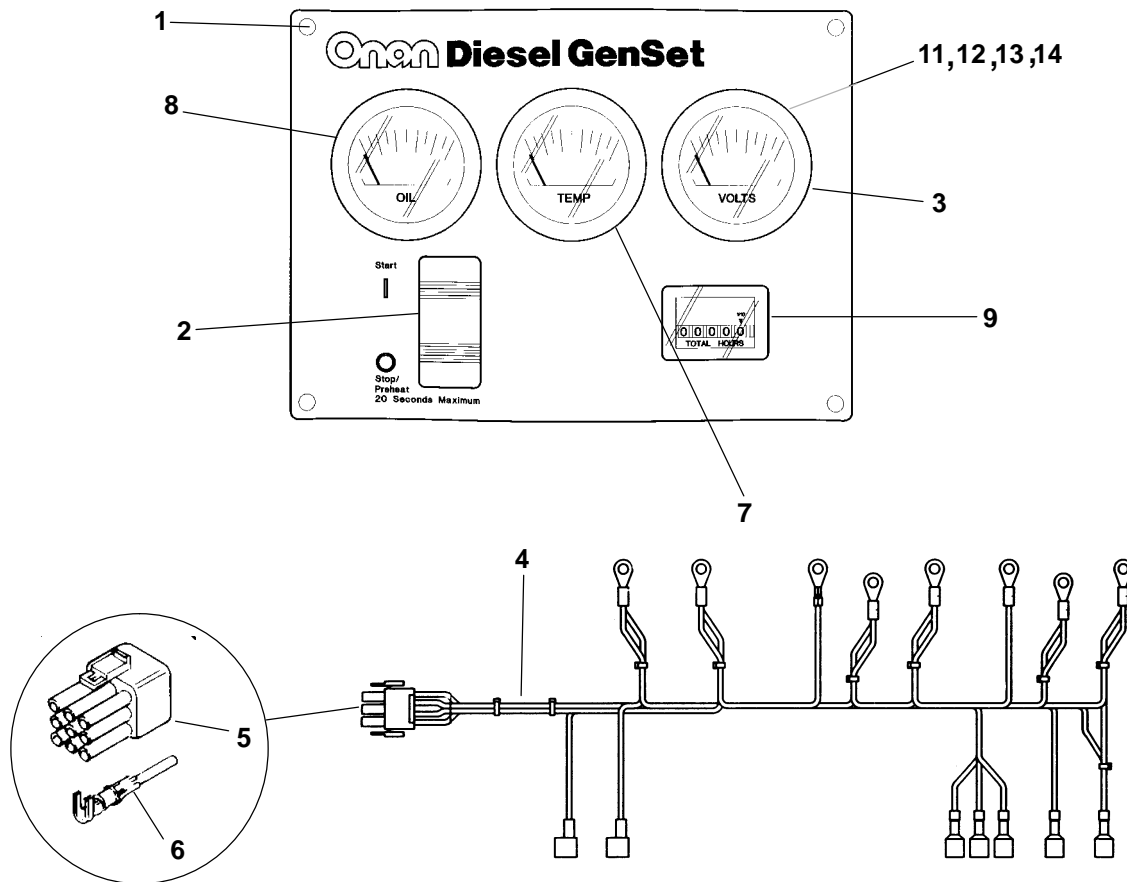
REF NO.	PART NO.	QTY USED	PART DESCRIPTION	REF NO.	PART NO.	QTY USED	PART DESCRIPTION
	300-4943	1	Kit, Switch/Hourmeter Remote Panel	4	302-2002	1	Meter, Hour
1	815-0910	2	Screw, Wood Mounting (#6 x 1)	5	338-3475	1	Harness, Remote Panel (Includes Pins and Plug)
2	319-2340-02	1	Panel, Printed	6	323-1199	4	Pin, Contact
3	308-1062	1	Switch, Rocker	7	323-1291	1	Plug (9 Pin)

Remote Switch/Voltmeter Panel



REF NO.	PART NO.	QTY USED	PART DESCRIPTION	REF NO.	PART NO.	QTY USED	PART DESCRIPTION
	300-4944	1	Kit, Remote Switch/Voltmeter Panel	6	871-0010	4	Nut, Hex Brass Machine (#10-32)
1	815-0910	2	Screw, Wood Mounting (#6 x 1)	7	850-0030	2	Washer, Lock (#10)
2	308-1062	1	Switch, Rocker	8	338-3509	1	Harness, Remote Panel (Includes Pins and Plug)
3	302-1641	1	Meter, Voltage	9	323-1199	4	Pin, Contact
4	526-0409	2	Washer, Nylon (3/16")	10	323-1291	1	Plug (9 Pin)
5	526-0049	4	Washer, Flat (#10)				

Remote Gauge Panel



REF NO.	PART NO.	QTY USED	PART DESCRIPTION	REF NO.	PART NO.	QTY USED	PART DESCRIPTION
	300-5027	1	Kit, Remote Gauge Panel	6	323-1199	8	Pin, Contact
1	808-0023	4	Screw, Pan Head Sheet Metal Mounting (#8 x 1/2")	7	193-0351	1	Gauge, Water Temperature
2	308-1062	1	Switch, Rocker (SPDT)	8	193-0352	1	Gauge, Oil Pressure
3	302-1641	1	Meter, Voltage	9	302-2002	1	Meter, Hour
4	338-3637	1	Harness, Remote Panel (Includes Plug and Pins)	11	526-0409	8	Washer, Nylon (3/16")
5	323-1291	1	Plug (9 Pin)	12	526-0049	16	Washer, Flat (#10)
				13	871-0010	16	Nut, Hex Brass Machine (#10-32)
				14	850-0030	8	Washer, Lock (#10)

Labels

REF NO.	PART NO.	QTY USED	PART DESCRIPTION	REF NO.	PART NO.	QTY USED	PART DESCRIPTION
	98-7485-07	1	Label, Blank Wiring Harness		541-0531	1	Kit, Commercial Remote Air Cleaner (Includes Parts Marked +)
			Label, Control Panel (2 Pole, W/Hourmeter)				
	98-7125-01	1	35A		140-3050	1	+Air Cleaner Assy (Includes Element and Cover)
	98-7125-05	1	30A				
	98-7368	1	Label, GenVerter		140-3071	1	+Element, Air Cleaner
			Label, Model Ident		140-3072	1	+Cover, Air Cleaner
			RV		800-2056	4	+Screw, Hex Head Cap (M8 x 16mm)
	98-6876-01	1	7.5 kW				
	98-6876-02	1	8.0 kW		870-2055	2	+Nut, Lock Flange
	98-7369	2	Commercial, 7.5 kW		503-2030	2	+Hose, Air Cleaner
	98-6780-01	1	Label, Remote Panel/Switch		140-3065	1	+Tube, Adapter
	98-6780-02	1	Label, Remote Panel/		140-3098	1	+Sleeve, Air Intake
			Hourmeter		503-1895-07	1	+Hose, Air Cleaner
	98-7351-03	1	Label, Remote Panel/Voltmeter		503-1895-08	1	+Hose, Air Cleaner
	98-7466	1	Label, Rear Control (M14, M13, M12, GND)		503-0429	4	+Clamp, Hose
			Label, Control Face (Onan Quiet Diesel)		503-1774	1	+Clamp, "J" Support
	98-7465-03	1			403-2213	1	+Spacer, Mounting Pad
					800-0055	1	+Screw, Hex Head Cap
					508-0051	1	+Grommet
	98-7244	1	Package, Label (Includes Parts Marked *)		821-2096-04	2	+Screw, Lock Flange (M6 x 1 x 20mm)
	98-7196	1	*Label, Cool/Oil Fill		850-2008	2	+Washer, Lock (M8)
	98-6877	1	*Label, Coolant Level		140-3099-02	1	+Bracket, Air Cleaner
	98-6878	1	*Label, Fuel Attachment		140-3100-02	2	+Shim, Bracket
	98-6476	1	*Label, Ground		526-2081	2	+Washer, Flat (M6)
	98-7482	1	*Label, Hose Kit				
	98-7197	1	*Label, Patent		541-0530	1	Kit, Aux Commercial Fuel Pump (Includes Parts Marked #)
	98-7199	1	*Label, Service Info				
	98-7127	1	*Label, Warning (Hazardous Voltage)		149-2547	1	#Pump, Fuel
					338-3580	1	#Harness, Fuel Pump
	98-7130	1	*Label, Warning (Overheat)		332-2947	2	#Connector, Splice
	98-7128	2	*Label, Warning (Voltage/Rotating Parts/Operation Service Risk)		323-1608	1	#Housing, Connector
					323-1607	2	#Contact, Socket
					323-1576	2	#Seal, Cable
	98-7131	1	*Label, Warning (Voltage/Rotating Fan)				

* – Parts Included in Label Package.

+ – Parts Included in Commercial Remote Air Cleaner Kit.

– Parts Included in Aux Commercial Fuel Pump Kit.

Numerical Index

<u>Part No.</u>	<u>Page</u>	<u>Part No.</u>	<u>Page</u>	<u>Part No.</u>	<u>Page</u>	<u>Part No.</u>	<u>Page</u>
098-6476, 47		134-5126, 23		185-2033, 6		185-5337, 15	
098-6780-01, 47		140-2536-05, 23		185-2094, 5		185-5348, 17	
098-6780-02, 47		140-2895, 23		185-2095, 5, 14		185-5350, 6	
098-6876-01, 47		140-2896, 23		185-2105, 20		185-5351, 6	
098-6876-02, 47		140-2897, 23		185-2115, 5		185-5357, 6	
098-6877, 47		140-2898, 23		185-2124, 20		185-5358, 6	
098-6878, 47		140-2956, 23		185-2163, 12		185-5360, 6	
098-7125-01, 47		140-2961-02, 23		185-2173, 9		185-5361, 6	
098-7125-05, 47		140-3050, 47		185-2180, 10		185-5363, 16	
098-7127, 47		140-3065, 47		185-2188, 5, 14		185-5364, 16	
098-7128, 47		140-3071, 47		185-2233, 5		185-5365, 16	
098-7130, 47		140-3072, 47		185-2234, 5		185-5366, 16	
098-7131, 47		140-3098, 47		185-2238, 18		185-5367, 16	
098-7196, 47		140-3099-02, 47		185-2283, 10		185-5368, 16	
098-7197, 47		140-3100-02, 47		185-2284, 10, 11, 15, 19		185-5369, 16	
098-7199, 47		149-2513, 22		185-2309, 20		185-5370, 16	
098-7244, 47		149-2547, 47		185-2338, 10		185-5371, 16	
098-7351-03, 47		149-2580, 22		185-2345, 15		185-5372, 16	
098-7368, 47		149-2583, 22		185-2349, 19		185-5373, 16	
098-7369, 47		149-2584, 22		185-2351, 17		185-5374, 16	
098-7465-03, 47		149-2585-02, 22		185-2353, 6, 12		185-5375, 16	
098-7466, 47		150-2630, 11		185-2357, 12		185-5376, 16	
098-7482, 47		150-2639, 11		185-2374, 20		185-5377, 16	
098-7485-07, 47		150-2641, 11		185-2385, 15		185-5378, 16	
100-3273, 5		150-2643, 11		185-2386, 7, 12, 17		185-5379, 16	
104-1890, 36		150-2724, 11		185-2387, 7		185-5380, 16	
122-0833, 20		154-2800, 31		185-2388, 18		185-5381, 16	
123-2051, 27		154-3018, 31		185-2389, 12, 20, 27, 29		185-5382, 16	
123-2120, 27		155-2424, 31		185-2390, 8		185-5383, 16	
130-4320, 25		155-2610, 31		185-2393, 9		185-5384, 16	
130-4321, 25		155-2982, 31		185-2395, 20		185-5385, 16	
130-4322, 25		155-3110, 31		185-2396, 27		185-5386, 16	
130-4391, 25		185-2016, 6		185-2398, 27		185-5387, 16	
130-4392, 25		185-2022, 6		185-2411, 14		185-5388, 16	
130-4450-02, 25		185-2023, 6		185-2413, 14		185-5389, 16	
130-4462, 25		185-2026, 6		185-2414, 14		185-5390, 16	
130-4471, 26		185-2028, 6		185-2559, 8, 21		185-5391, 16	
130-4655, 33		185-2029, 6		185-2572, 28		185-5392, 16	
130-4689, 26		185-2030, 6		185-3078, 27		185-5393, 16	
134-5063, 23		185-2031, 6		185-4255, 17, 20		185-5394, 16	

Numerical Index

<u>Part No.</u>	<u>Page</u>	<u>Part No.</u>	<u>Page</u>	<u>Part No.</u>	<u>Page</u>	<u>Part No.</u>	<u>Page</u>
185-5395, 16		185-5502, 14		185-5562, 7		185-5633, 12	
185-5396, 16		185-5503, 14		185-5563, 7		185-5634, 12	
185-5397, 16		185-5505, 20		185-5564, 7		185-5635, 12	
185-5398, 16		185-5506, 20		185-5565, 7		185-5638, 13	
185-5399, 16		185-5507, 20		185-5566, 6		185-5639, 13	
185-5400, 16		185-5509, 20		185-5568, 6		185-5640, 13	
185-5401, 16		185-5510, 20		185-5569, 6		185-5641, 13	
185-5402, 16		185-5512, 20		185-5570, 6		185-5642, 13	
185-5403, 16		185-5513, 20		185-5571, 6		185-5643, 13	
185-5404, 16		185-5515, 8		185-5572, 6		185-5644, 13	
185-5405, 16		185-5516, 8		185-5573, 6		185-5645, 13	
185-5406, 16		185-5517, 8		185-5575, 6		185-5646, 13	
185-5407, 19		185-5519, 8		185-5576, 6		185-5647, 13	
185-5410, 20		185-5520, 19		185-5577, 6		185-5648, 13	
185-5411, 20		185-5521, 19		185-5578, 6		185-5649, 13	
185-5412, 5		185-5522, 19		185-5579, 6		185-5650, 13	
185-5413, 5		185-5523, 19		185-5580, 6		185-5652, 13	
185-5414, 5		185-5524, 19		185-5581, 6		185-5653, 13	
185-5415, 5		185-5525, 19		185-5582, 6		185-5654, 13	
185-5416, 5		185-5529, 19		185-5583, 6		185-5655, 13	
185-5421, 15		185-5534, 31		185-5584, 6		185-5658, 13	
185-5433, 21		185-5536, 31		185-5587, 36		185-5659, 13	
185-5434, 21		185-5537, 17		185-5610, 15		185-5660, 13	
185-5437, 8		185-5538, 17		185-5611, 15		185-5661, 13	
185-5438, 8		185-5539, 17		185-5612, 15		185-5662, 13	
185-5458, 18		185-5540, 17		185-5615, 15		185-5663, 13	
185-5482, 5		185-5541, 17		185-5616, 16		185-5679, 10	
185-5483, 5		185-5542, 17		185-5617, 16		185-5680, 10	
185-5484, 5		185-5545, 17		185-5618, 16		185-5681, 10	
185-5485, 5		185-5546, 17		185-5619, 16		185-5682, 10	
185-5486, 5		185-5547, 17		185-5621, 16		185-5685, 10	
185-5487, 5		185-5550, 17		185-5622, 16		185-5696, 9	
185-5488, 5		185-5551, 17		185-5623, 12		185-5701, 9	
185-5489, 5		185-5552, 17		185-5624, 12		185-5702, 9	
185-5490, 5		185-5553, 17		185-5625, 12		185-5703, 9	
185-5491, 5		185-5554, 7		185-5626, 13		185-5707, 28	
185-5492, 5		185-5555, 7		185-5629, 12		185-5709, 28	
185-5496, 27		185-5558, 7		185-5630, 12		185-5712, 21	
185-5500, 14		185-5560, 7		185-5631, 12		185-5713, 21	
185-5501, 14		185-5561, 7		185-5632, 12		185-5714, 21	

Numerical Index

<u>Part No.</u>	<u>Page</u>	<u>Part No.</u>	<u>Page</u>	<u>Part No.</u>	<u>Page</u>	<u>Part No.</u>	<u>Page</u>
185-5715, 21		185-6707, 13		185-7087, 29		320-1939-02, 35	
185-5716, 21		185-6711, 20		185-7267, 11		320-1965, 35	
185-5717, 21		185-6738, 15, 16		185-7383, 8		320-1966-02, 35	
185-5718, 18		185-6739, 12		191-2200, 36, 37		321-0307-08, 39	
185-5719, 18		185-6749, 12		191-2215, 37		321-0321-07, 39	
185-5720, 18		185-6759, 12, 17, 20		191-2216, 37		321-0322, 39	
185-5721, 18		185-6791, 31		191-2217, 37		321-0349, 39	
185-5722, 18		185-6818, 27		191-2218, 37		323-1199, 43, 44, 45, 46	
185-5741, 20		185-6825, 16		191-2219, 37		323-1200, 42	
185-5742, 20		185-6845, 12		191-2221, 37		323-1291, 43, 44, 45, 46	
185-5743, 20		185-6846, 27		191-2222, 37		323-1325, 42	
185-5744, 20		185-6852, 31		191-2228, 33		323-1492, 39	
185-5745, 20		185-6853, 31		193-0318, 18		323-1582, 39	
185-5746, 20		185-6931, 10		193-0351, 46		323-1582-02, 39	
185-5747, 19		185-6937, 12, 13		193-0352, 46		323-1583, 39	
185-5792, 18		185-6945, 9		201-3540, 36		323-1591, 39	
185-5798, 12		185-6946, 9		205-0232, 36		323-1707, 42	
185-5800, 20		185-6947, 9		220-4484-01, 36		323-1708, 39, 42	
185-5805, 14		185-6948, 15		300-4800-96, 38		323-1709, 39	
185-5807, 19		185-6956, 14, 27		300-4884, 41		323-1710, 42	
185-5808, 8		185-6999, 9		300-4942, 43		323-1711, 39	
185-5810, 7		185-7004, 15		300-4943, 44		323-1712, 39, 42	
185-5817, 13		185-7068, 27		300-4944, 45		323-1719, 39, 42	
185-5818, 13		185-7069, 20		300-5027, 46		332-0819, 39	
185-5819, 13		185-7070, 20		300-5295, 38		332-0819-02, 39	
185-5820, 13		185-7071, 19		302-1641, 45, 46		332-1356, 23	
185-5822, 15		185-7072, 8		302-2002, 35, 44, 46		332-1553, 38	
185-5823, 15		185-7073, 8		305-0952-02, 33		332-1554, 22, 26, 41	
185-5829, 31		185-7074, 7		308-1019, 39		332-2112, 39	
185-5831, 29		185-7075, 7		308-1038, 35		332-2298, 39	
185-5832, 29		185-7076, 6		308-1062, 43, 44, 45, 46		332-2298-01, 39	
185-5833, 29		185-7077, 12		315-0760, 40		332-2898, 27	
185-5985, 15		185-7078, 10		315-0770, 39, 40, 41		332-3384, 40	
185-6120, 14		185-7079, 9		315-0793, 33		332-3408, 41	
185-6257, 20		185-7080, 11		315-0821, 39, 40		332-3531-04, 40	
185-6580, 12		185-7082, 15		319-2340-01, 43		337-2845, 33	
185-6667, 18		185-7083, 28		319-2340-02, 44		337-2953, 33	
185-6704, 5		185-7084, 18		319-3033-02, 38		338-3272, 42	
185-6705, 6		185-7085, 17		320-1875-01, 40		338-3416, 39	
185-6706, 12		185-7086, 17		320-1875-04, 40		338-3417, 40	

Numerical Index

<u>Part No.</u>	<u>Page</u>	<u>Part No.</u>	<u>Page</u>	<u>Part No.</u>	<u>Page</u>	<u>Part No.</u>	<u>Page</u>
338-3417-03, 40		405-5086, 26		503-1979, 23		815-0781, 36	
338-3418, 40		405-5308, 26		503-1985, 23		815-0829-05, 33	
338-3422, 41		405-5309-03, 35		503-2030, 47		815-0861, 33	
338-3475, 44		405-5380-05, 35		503-2052, 22		815-0876, 36	
338-3490-01, 42		405-5546, 35		508-0051, 47		815-0877, 11	
338-3490-02, 42		405-5575-01, 35		508-1105, 39		815-0896-03, 38	
338-3509, 45		405-5575-02, 35		508-1118, 35		815-0908, 33	
338-3512, 43		405-5755, 31		509-0329, 25, 27		815-0910, 43, 44, 45	
338-3573, 42		405-5756, 23		510-0163, 12		818-0226-01, 26	
338-3580, 47		405-5757, 35		510-0184, 11		821-2032, 27	
338-3587-01, 40		405-5759, 35		511-0187, 28		821-2035, 25	
338-3587-04, 40		405-5762, 35		518-0533, 38		821-2096-02, 25, 35	
338-3588-01, 40		405-5779, 35		518-0581, 26, 35		821-2096-03, 26, 35, 41	
338-3637, 46		405-5787, 31		518-0672, 11		821-2096-04, 47	
338-3822, 39		405-5818, 33		526-0049, 45, 46		823-0002-08, 40	
338-3823-01, 40		405-5822-01, 35		526-0054, 41		823-0003-02, 22, 23, 26, 31, 33, 38, 41	
338-3824-01, 40		405-5822-02, 35		526-0115, 31		823-0003-03, 33	
338-3824-04, 40		405-5823-02, 35		526-0409, 45, 46		823-1002-03, 23, 33	
338-3841, 41		405-5824-02, 35		526-2080, 36		823-1002-04, 23, 33, 38	
402-0673-02, 33		405-5875, 35		526-2081, 47		850-0030, 45, 46	
402-0680-01, 33		405-6037-02, 35		526-2083, 27		850-0045, 33	
402-0687-01, 31		405-6037-03, 35		526-2100, 36		850-2006, 11	
402-0688-02, 31		406-0612, 33		541-0530, 47		850-2008, 36, 47	
402-0695-02, 31		406-0842, 35		541-0531, 47		854-0028, 22	
403-2213, 47		502-0313, 22		725-1027, 11		856-0006, 33	
403-3847-04, 33		502-0395, 25		725-1050, 31		856-0008, 33, 41	
403-3859, 27		502-1296-02, 22		740-1002, 11		860-2008, 31, 36	
403-3860, 22		503-0170, 22, 25		740-1004, 17, 36		862-0015, 33, 41	
403-3861, 33		503-0429, 23, 47		800-0030-01, 33		865-0029, 23	
403-3863-02, 22		503-1137, 25, 27		800-0055, 47		868-0007, 22	
405-5066-01, 35		503-1774, 47		800-0603-01, 23		870-0257, 22	
405-5066-02, 35		503-1895-07, 47		800-0730, 31		870-0540-03, 23	
405-5071-02, 35		503-1895-08, 47		800-2044, 36		870-0542, 26	
405-5071-03, 35		503-1920, 25		800-2056, 47		870-2054, 22, 25, 41	
405-5077-01, 35		503-1921, 25		800-2058, 36		870-2055, 47	
405-5080-01, 35		503-1922, 25		802-2506, 11		871-0010, 45, 46	
405-5080-02, 35		503-1923, 25		808-0023, 46		871-0025, 41	
405-5081, 35		503-1954, 25		812-0070, 40			
405-5083-01, 35		503-1959, 25		815-0549-01, 35			
405-5083-02, 35		503-1970-02, 25		815-0550-02, 35			



Onan Corporation
1400 73rd Avenue N.E.
Minneapolis, MN 55432
1-800-888-ONAN
612-574-5000 International Use
Telex: 275477
Fax: 612-574-8087

Onan is a registered trademark of Onan Corporation